



**MAKE WAVES.**

Western Washington  
University's

**House of Healing**

Coast Salish Longhouse

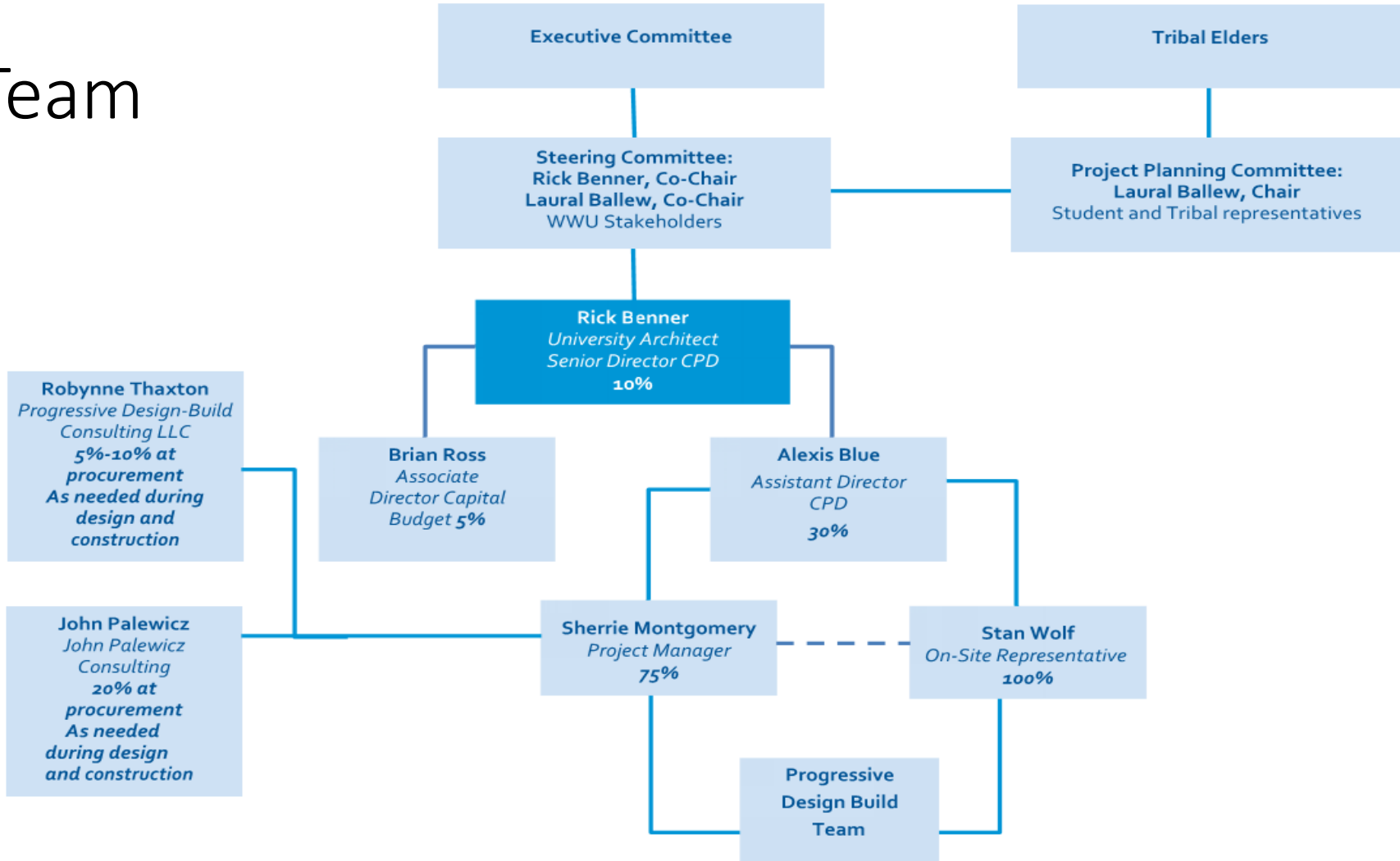
**PRC Presentation**

December 2, 2021

# Introductions

- Laural Ballew, Executive Director of American Indian/Alaska Native and First Nation Relations, and Tribal Liaison to the President
- Rick Benner, FAIA, University Architect, Senior Director, Capital Planning & Development
- Brian Ross, Associate Director, Capital Planning & Development
- Alexis Blue, Assistant Director, Capital Planning & Development
- Sherrie Montgomery, AIA, DBIA, LEED, Project Manager, Capital Planning & Development
- Robynne Thaxton, JD, FDBIA, Progressive Design-Build Consulting LLC
- John Palewicz, AIA, DBIA, LEED, John Palewicz Consulting LLC

# Team



# The Proposal

- Build a new Coast Salish Longhouse of approximately 5,500-7,000 GSF on an open meadow in Sehome Arboretum, adjacent to Western's campus.





Sehome Arboretum

Fairhaven College

Western Washington University

Buchanan Towers Residence Hall

Project Site

Sehome High School

Google

200'



# Governance

## Executive Committee

VP Gibbs  
VP Huskey  
VP Lopes

## Steering Committee

Laural Ballew, Co-Chair  
Rick Benner, Co-Chair  
Eric Alexander  
John Furman  
Manca Valum  
Ellen Kuhlmann  
Kristen French  
James Miller  
Kylie Gemmell  
Sienna Reid  
Kendra Bradford, SABOG rep.  
Alexis Blue  
Sherrie Montgomery – PM  
\*font color represents overlap representation on Project Planning Committee

Design/Build Team

## Project Planning Committee

Laural Ballew, Chair  
Debra Lekanoff - Tlingit, 40<sup>th</sup> District Representative  
Michael Vendiola - Swinomish, WWU alumni, Owner at Philomath Groove, works as Director of Education for Swinomish Tribal community.  
Lawrence Solomonm - Lummi chairman  
Donia Edwards - Nooksack Education Director (alumni)  
Elena Dan - NASU student – Swinomish  
Sienna Reid - NASU student – Alaska Native  
Raquel Vigil - Staff, Skokomish WWU Tribal Advisory member  
Michaela Vendiola - original author of 2016 NASU letter  
Tahlia Natachu - original author of 2016 NASU letter  
Kylie Gemmell - original author of 2016 NASU letter  
Louie Gong - Nooksack, alumni, artist, educator and public speaker, founder of Eighth Generation  
Matt Remle - (Lakota) alumni, writer, activist, and editor of Last Real Indian (an online publication), Indian education.  
Bernie Thomas - Lummi, Lummi Nation School Superintendent  
Caskey Russell – Tlingit, Dean of Fairhaven College  
Kristen French - Blackfeet/Gros Ventre, associate professor in Elementary Education and director of the Center for Education, Equity and Diversity, Woodring  
James Miller - Assistant Professor in Comparative Indigenous Studies with a joint appointment in Canadian-American Studies, Salish Sea Studies and the Huxley College of the Environment

## Elders Committee

Juanita Jefferson - Lummi, tribal elder, WWU alumni, activist and volunteer.  
Jim Thomas - Tlingit formerly of Yakutat, Alaska, former president of the Potlatch Fund, member of Affiliated Tribes of Northwest Indians.  
Larry Campbell - Swinomish tribal elder, WWU alumni, Community Health Specialist at Swinomish Tribal Community, Board of Trustees at Northwest Indian College.  
Diane Vendiola - Swinomish tribal elder  
Marilyn Waundry - Suquamish tribal elder, Director Regional Indian Program at American Friends Service Committee, Seattle  
Patricia Whitefoot - Yakama tribal elder, President of the National Indian Education Association. Indian Enterprise Development, Chair of the Education Committee for ATNI



# Native, Diverse Outreach & Enhancement

- RFQ will request successful use of Native and certified businesses.
- RFP will require responders to submit their plan that includes experience and strategies for enhancement:
  - Target percentage for inclusion on this project. Plan describing steps to achieve this goal.
  - Description of plan for outreach, enhancement and provision of opportunities for participation.
  - Plan to provide deliberate outreach to Coast Salish Tribes to encourage participation.
- Tribal Employment Rights Office (TERO) will be used for outreach and support.
- Design-Build is the best delivery method to achieve high participation.



# Budget

Costs for Professional Services (A/E, Legal etc.)	\$492,000
Estimated project construction costs	\$3,384,000
Equipment and furnishing costs	\$205,000
Contract administration costs	\$202,000
Contingencies (design, construction and owner)	\$248,000
Other related project costs - Permits, Maintenance Assist, Artwork	\$83,000
Sales Tax	\$336,000
<b>Total</b>	<b>\$4,950,000</b>



# Why Progressive Design-Build?

- Maximize fixed project budget.
- Ambitious goals including:
  - High native-owned and MWBE participation.
  - Active participation by student groups, Tribes, and local community.
  - Low-impact development strategies.
  - Use of locally sourced material and products in construction.
- DB team collaboration, including trade partners and subcontractors, maximizes project innovation.
- PDB provides the greatest opportunity for high Native participation.



**MAKE WAVES.**

Western Washington  
University's

**House of Healing**

Coast Salish Longhouse

**Thank you!**