



# Kitsap County Solids and Liquid Hauled Waste Upgrades

GC/CM Application Presentation



September 28, 2023







## A G E N D A

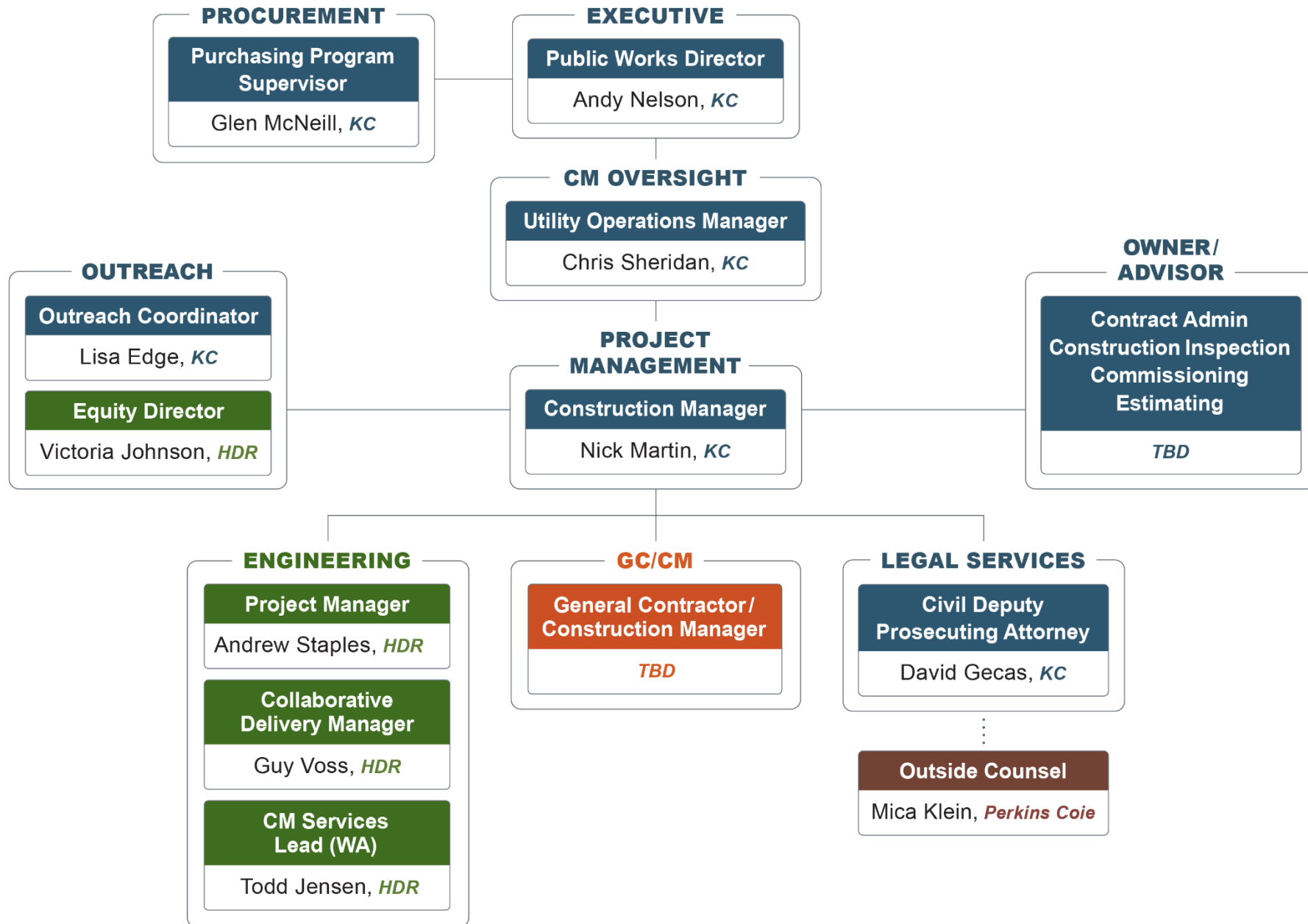
- 1** Introductions
- 2** Project Description
- 3** Why GC/CM
- 4** Public Body Qualifications
- 5** Closing
- 6** Q&A





# 1

## Introductions



# Additional Project Team Members

- Dave Tucker, Assistant PW Director - Utilities
- Stella Vakarcs, Sewer Utility Program Manager
- Anthony Burgess, Capital Program Engineer





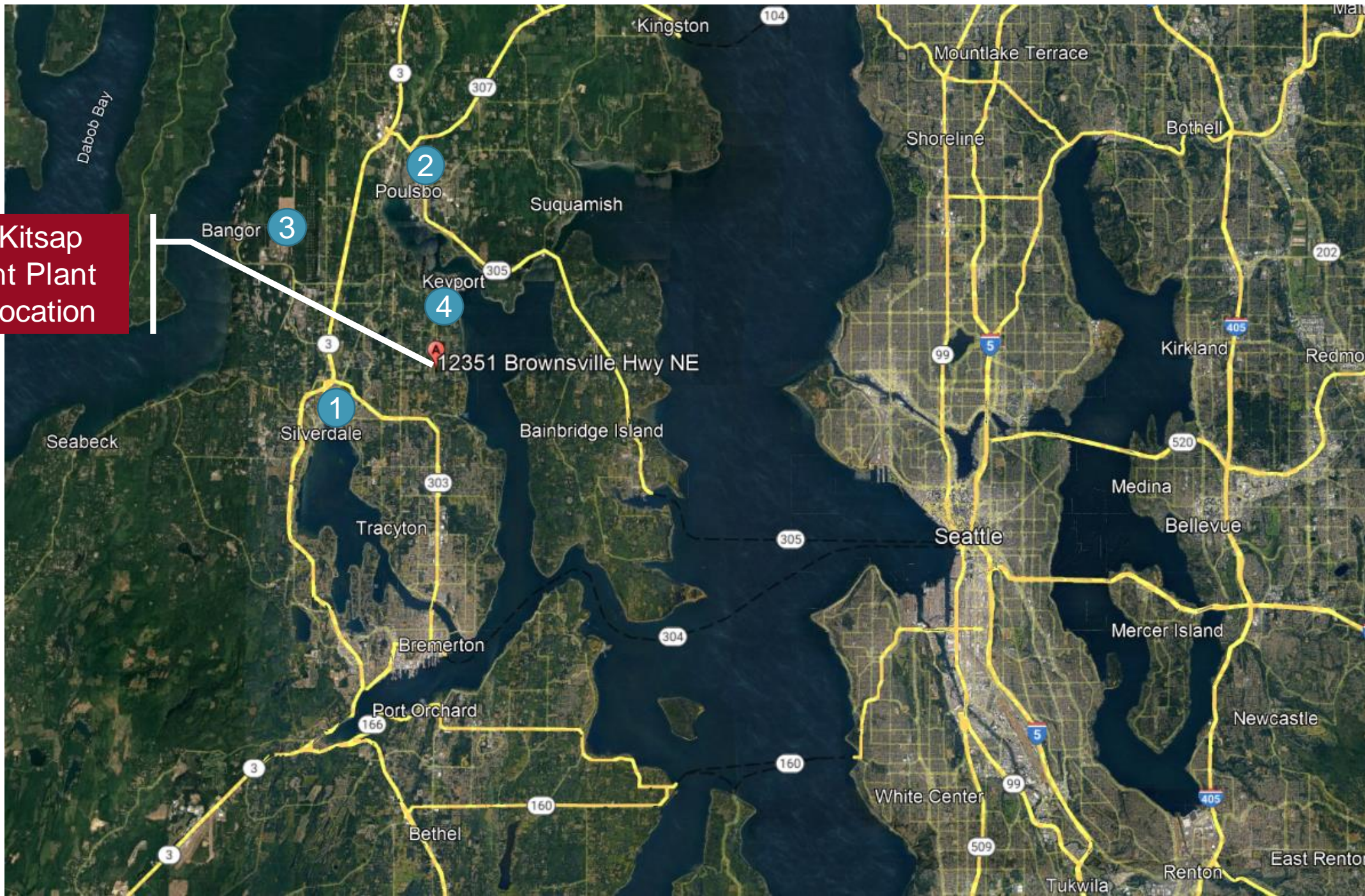
# 2

## Project Description

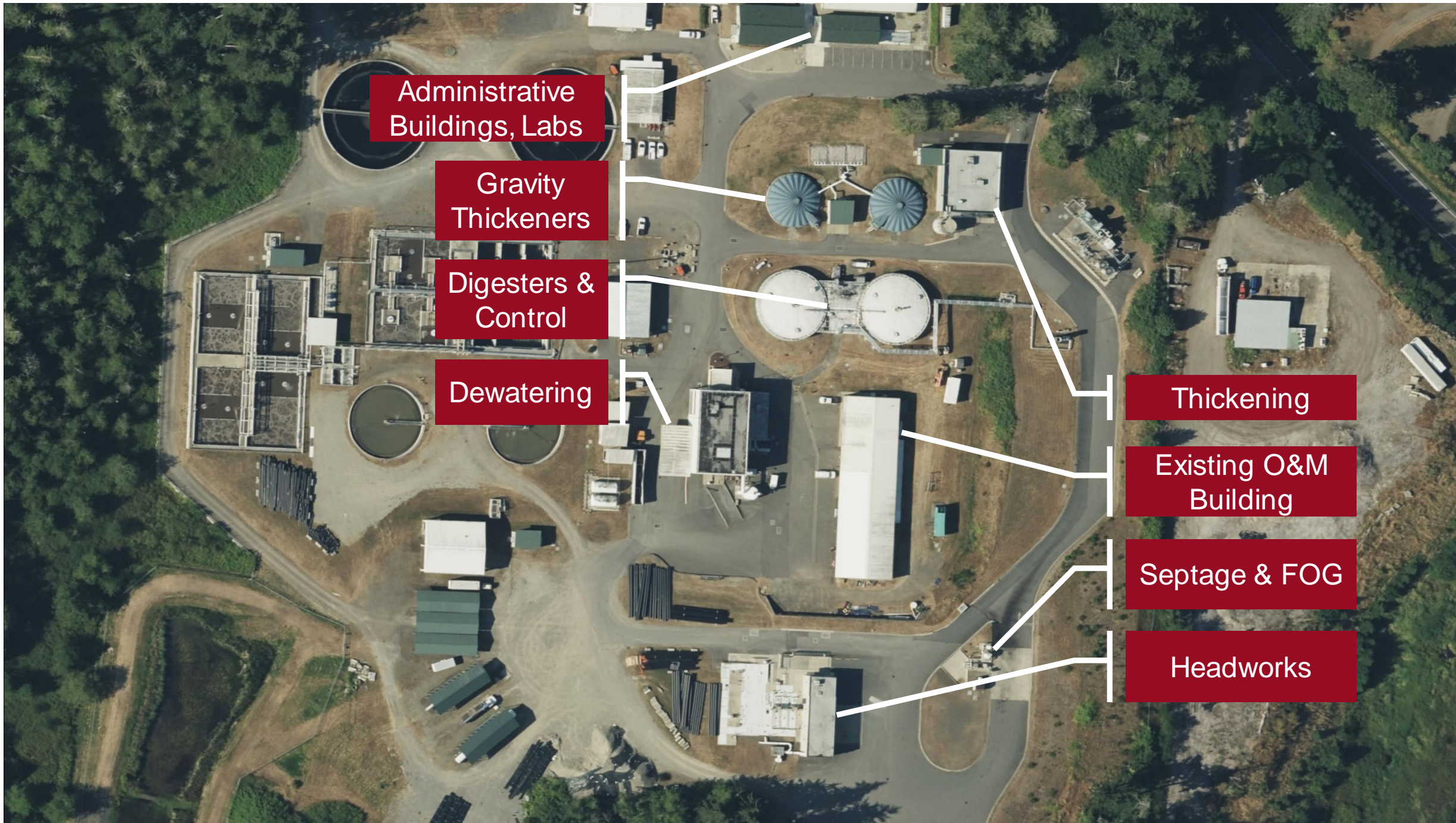


Central Kitsap  
Treatment Plant  
Project Location

- 1 Silverdale
- 2 Poulsbo
- 3 Bangor
- 4 Keyport







Administrative  
Buildings, Labs

Gravity  
Thickeners

Digesters &  
Control

Dewatering

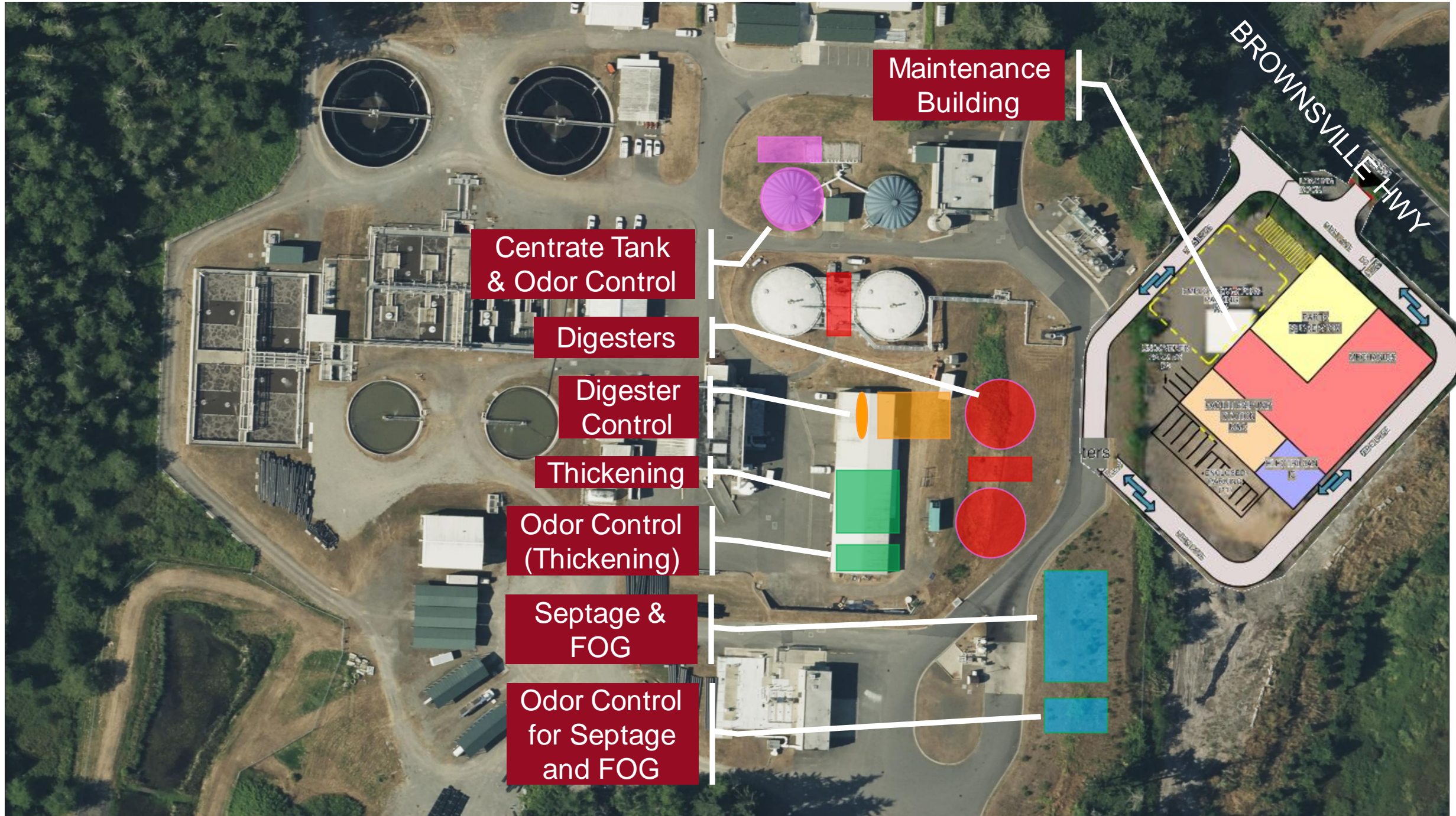
Thickening

Existing O&M  
Building

Septage & FOG

Headworks





Maintenance Building

Centrate Tank & Odor Control

Digesters

Digester Control

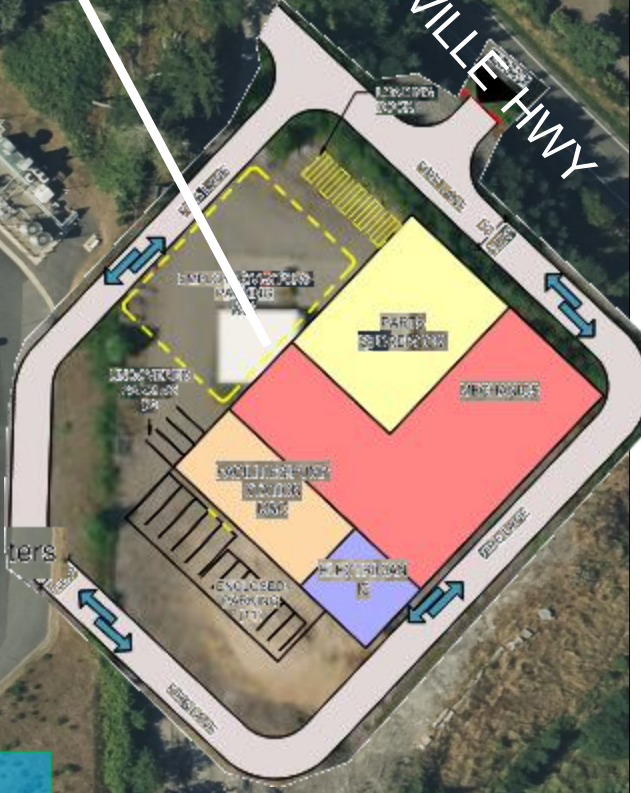
Thickening

Odor Control (Thickening)

Septage & FOG

Odor Control for Septage and FOG

BROWNSVILLE HWY





# Examples of Critical Long Lead Time Equipment



Medium Voltage Switchgear



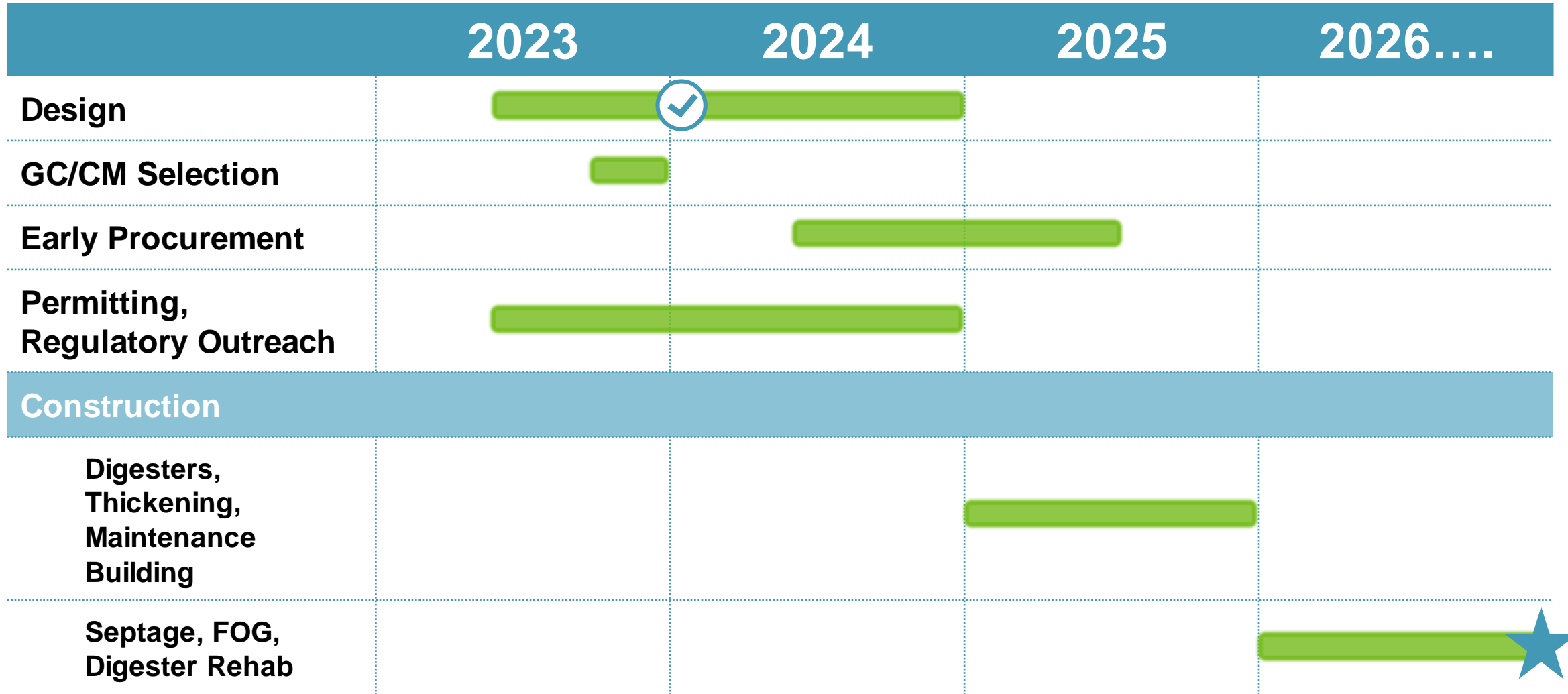
Proprietary Equipment

Fabricated Structures





# Project Schedule



 GC/CM on board at 30% design

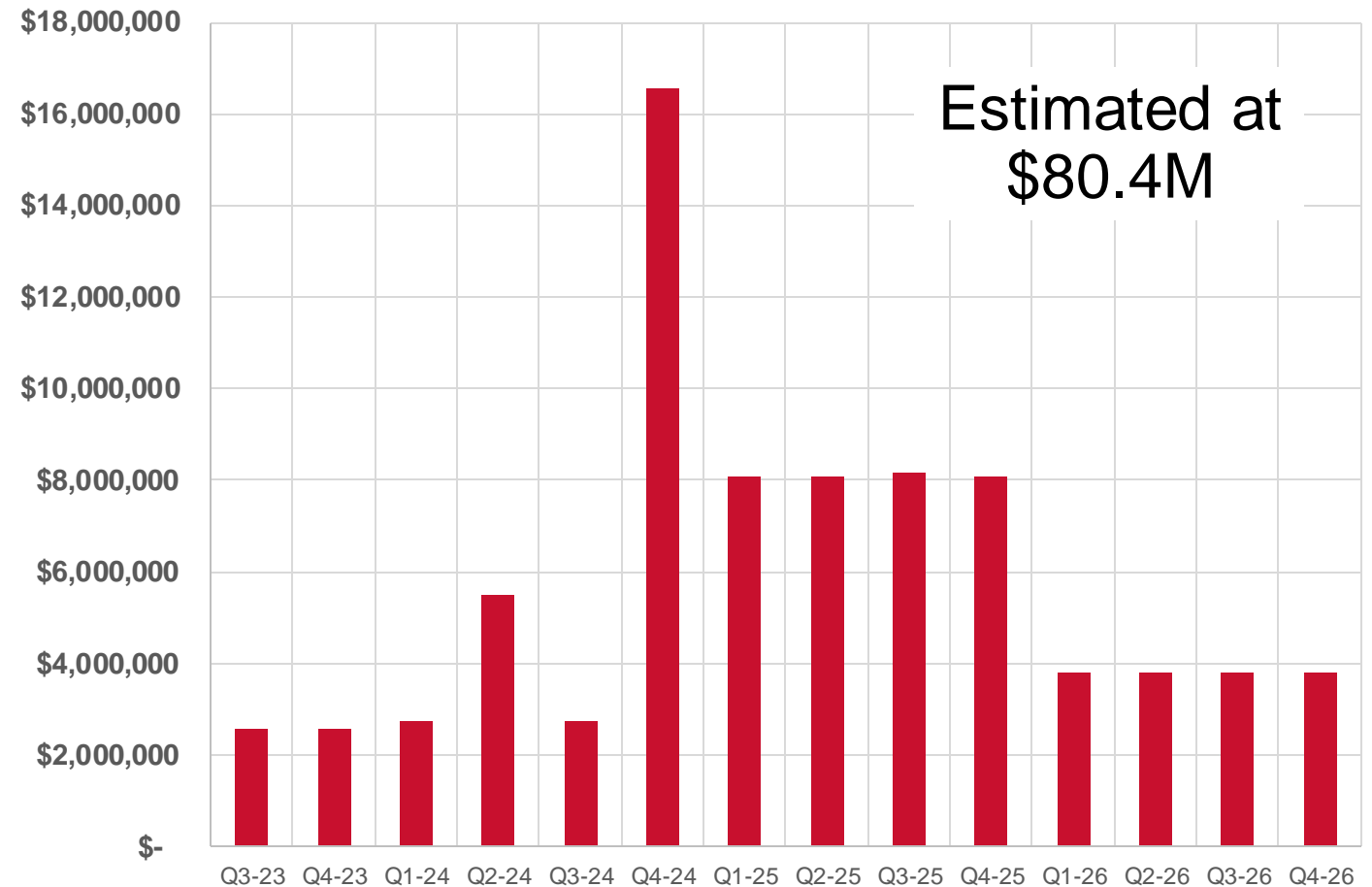
 Digesters must be in service by end of 2026



# Project Finances

- Funding Strategy Workshop
- Coordination with DOE for Funding and Financial Milestones
- Potential Funding Sources
  - SRF
  - WIFIA
  - PWTF
  - DOD DCIP
  - Bonds
  - Reserves

Estimated Quarterly Project Costs







# 3

Why GC/CM?



# Project Delivery Model Selection

County Design Core Team		
Randall Bolton <i>Operator</i>	Rich Neal <i>Plant Supervisor</i>	Dennis Graham <i>Maintenance Supervisor</i>
John Yates <i>Facility Maintenance</i>	Matt Pickering <i>Laboratory and Regulatory</i>	Zach Knight <i>Instrument Controls and Electrician</i>
Chris Sheridan <i>Utility Operations Manager</i>	Nick Martin <i>Construction Manager</i>	Floyd Bayless <i>Construction Manager</i>

Delivery Method Ranking						
Evaluation Criteria	Wt.	Weighted Ranking				
		DBB	GC/CM	DB	PDB	DBO
Schedule Certainty	10	50	80	100	70	100
Cost Certainty	9	54	72	81	72	81
Design to Budget	9	45	81	63	81	63
Owner Control (Procure, Design, Budget)	8	56	72	48	64	40
Collaboration	8	40	80	56	80	56
Innovation	6	36	54	42	60	42
Project Delivery Learning Curve	6	60	48	30	36	24
Risk Allocation/Sharing	5	25	45	40	45	40
Performance Certainty	4	20	28	32	32	40
Project Design Completeness	3	27	24	21	18	21
		413	584	513	558	507

DBB = Design-Bid-Build

GC/CM = General Contractor/  
Construction Manager

DB = Design-Build

PDB = Progressive Design-Build

DBO = Design-Build Operate





# Proactive Preparation

- New Contracts



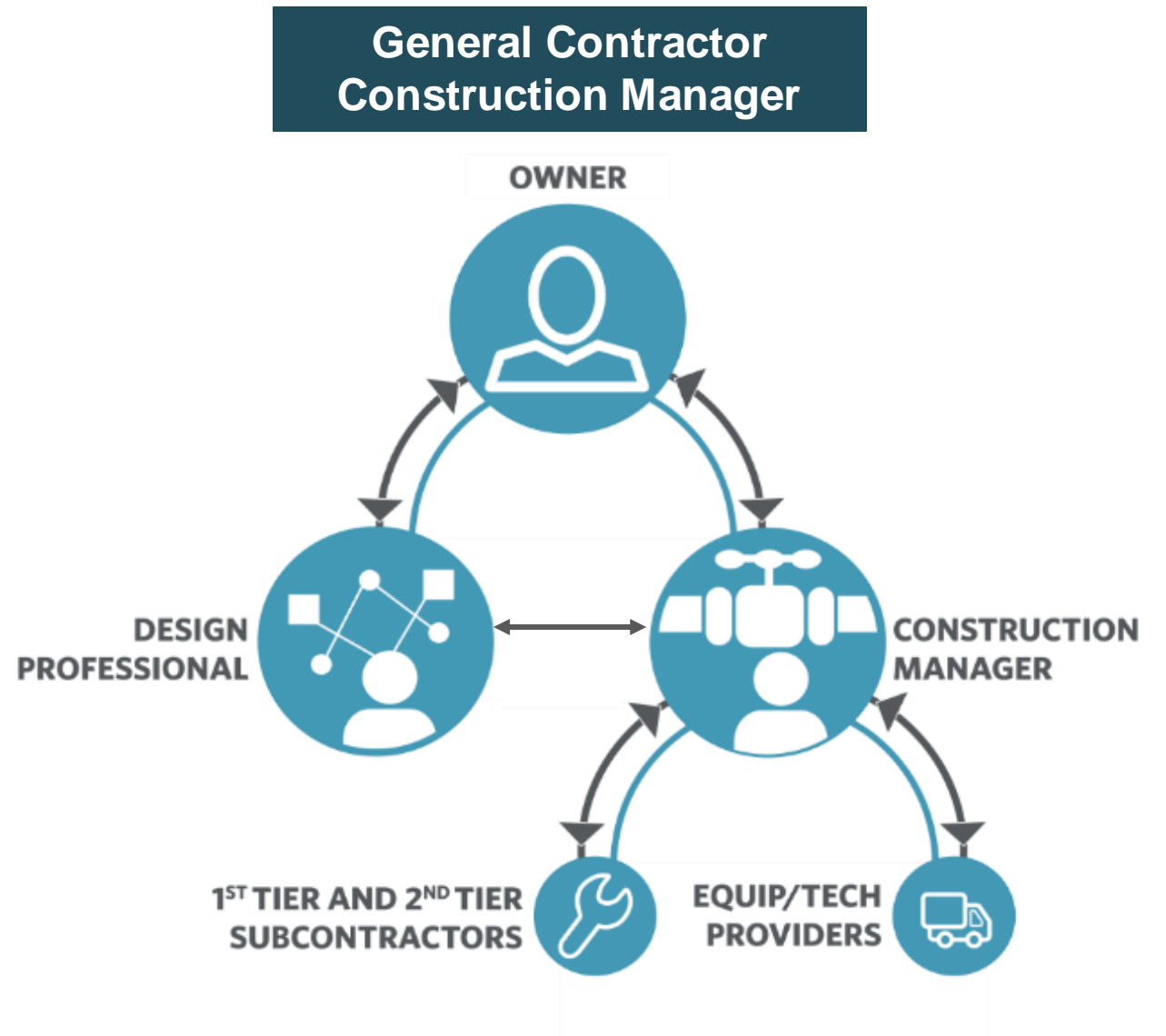
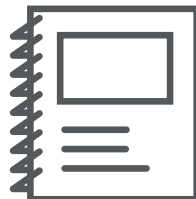
- County Experience



- Funding Alignment



- WCDA Collaborative Delivery Training







# 4

## Public Body Qualifications

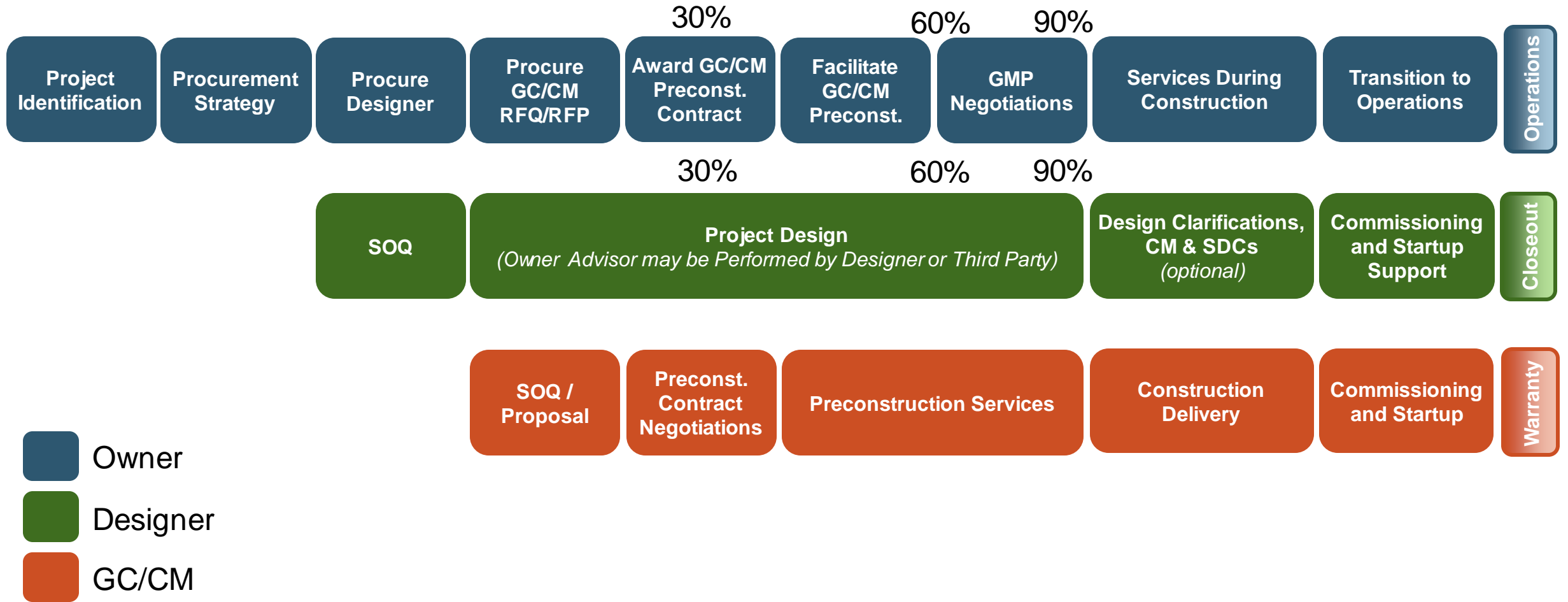
# Construction History

Project Name	Contracting Method	Actual Finish	Planned Budget	Actual Budget
PS 19 & 31 Upgrades	D-B-B	On-Going	\$4.8M	On Going
Bangor/Keyport Forcemain Project	D-B-B	On-Going	\$18.6M	On-Going
Silverdale Conveyance & PS 4	D-B-B	On-Going	\$10.8M	On-Going
CKTP Digester Rehab	D-B-B	Mar-23	\$1.9M	\$1.5M
Bayshore Drive	D-B-B	Jan-23	\$35.2M	\$34.8M
<b>Brownsville Hwy/ Emergency FM repair</b>	<b>D-B</b>	Mar-22	\$0.8M	\$1.4M
CKTP Diffuser Replacement	D-B-B	Nov-21	\$0.6M	\$0.6M
CKTP Modular Bldg Additions	D-B-B	Aug-21	\$1.3M	\$1.3M
<b>Kingston WWTP Oxidation Ditch Upgrade</b>	<b>ESPC</b>	Feb-21	\$2.8M	\$3M
<b>CKTP Dewatering System</b>	<b>ESPC</b>	May-20	\$3.8M	\$3.8M
<b>CKTP UV Disinfectant System</b>	<b>ESPC</b>	Jan-20	\$2.9M	\$2.9M
Manchester Yukon Harbor Sewer Extension	D-B-B	Mar-19	\$5.6M	\$5.5M
Manchester Pump Station 45, 46 & 47	D-B-B	Oct-18	\$4.8M	\$5.2M
Central Kitsap Pump Stations 1, 6, 8, 18 Upgrades	D-B-B	Jun-18	\$6.1M	\$6.3M
Central Kitsap Pipeline Upgrades/Extension	D-B-B	Jan-18	\$7.9M	\$8.0M
Pump Stations 16/67	D-B-B	Jan-17	\$4.7M	\$4.9M
CKTP Reclamation Recovery Project	D-B-B	Oct-16	\$29.6M	\$31.2M





# GC/CM Procurement Process





# Diversity, Equity & Inclusion

- Project is an Opportunity



- Outreach



- Past Experience







5

Closing





6

Q&A