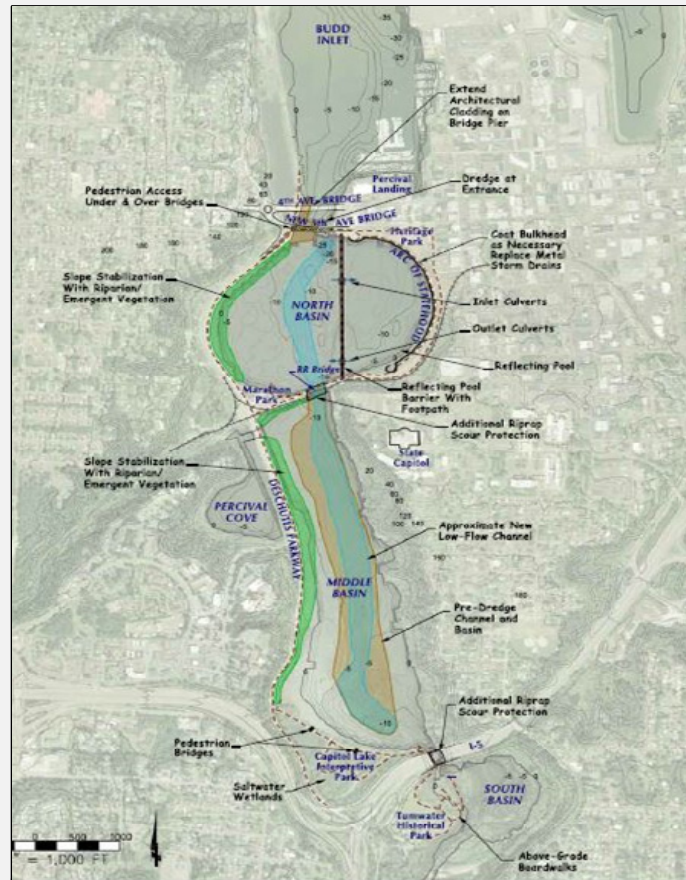


### Hybrid Option: Dual Basin

**Adaptively Manages** the basin by establishing a tidal estuary in the western portion of the north basin, and throughout the middle and south basins. Maintains a 39-acre saltwater **Reflecting Pool** at the north end of the basin through construction of a sheet pile retaining wall. **Improves Fish and Wildlife Habitat** and **Ecosystem Functions** by establishing estuary marsh plants throughout the basin and creating intertidal habitat along Deschutes Parkway.

#### Additional components:

- Construction of a 500-ft opening at the current Fifth Avenue dam
- Initial dredging in Capitol Lake and maintenance dredging in Budd Inlet
- Installation of elevated boardwalks within estuary and on top of retaining wall



Source: Department of General Administration/Herrera 2009

### Hybrid Option: Dual Estuary/Lake Idea (DELI)

**Adaptively Manages** the basin by establishing a tidal estuary in the western portion of the north basin, and throughout the middle and south basins. Maintains a 48-acre freshwater **Reflecting Pool** at the north end of the basin through construction of a rock containment wall. **Improves Fish and Wildlife Habitat** and **Ecosystem Functions** through natural reestablishment of saltwater plants within the estuary and management of invasive species.

#### Additional components:

- Construction of a 500-ft opening beneath a reconstructed Fifth Avenue
- Installation of sediment trap with pumping station and annual maintenance dredging
- Construction of new public swimming area and pedestrian walkway on top of containment wall



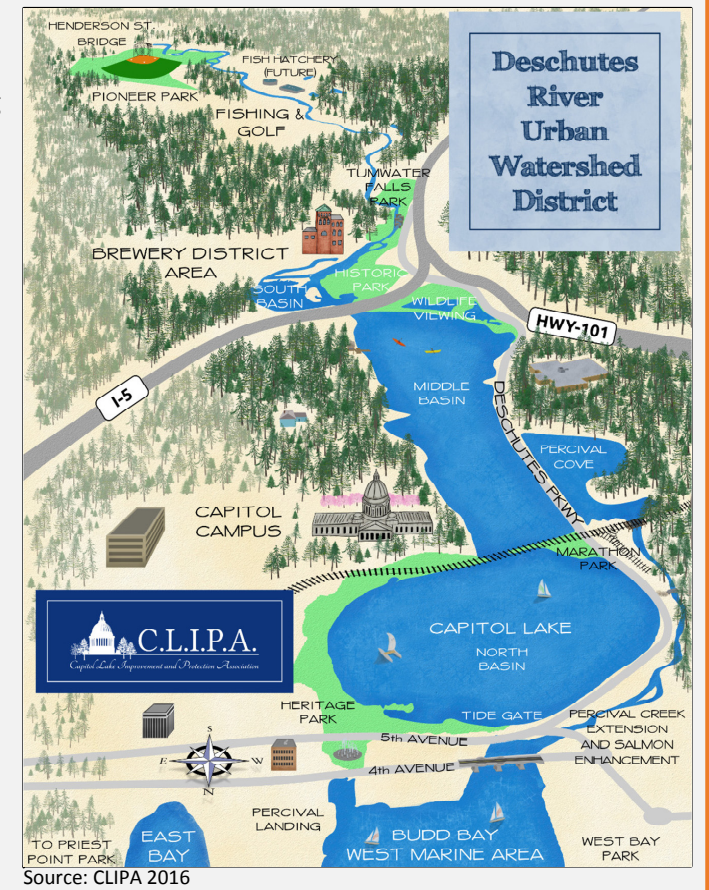
Source: Shanewise 2016

### Hybrid Option: Percival Creek Rechanneling and Salmon Habitat Rehabilitation Plan

**Adaptively Manages** the basin through selective dredging of Capitol Lake and freshwater plant harvesting. Maintains the historic **Reflecting Pool** and existing Capitol Lake and its basins. **Improves Fish and Wildlife Habitat** and **Ecosystem Functions** through construction of a new streambed west of the relocated Deschutes Parkway, removal of fish passage barriers, placement of engineered log jams and enhancement of riparian conditions.

#### Additional components:

- Retains existing Fifth Avenue dam and tide gate in its existing configuration
- Periodic dredging in the middle basin and routine maintenance dredging in the north basin
- Use of Capitol Lake for public swimming and construction of a boat harbor



Source: CLIPA 2016

**Notes:**

1. The information included on this figure has not been modified from its original proposal, but has been summarized to fit this presentation format. This graphic represents information from the project proponents. Without design and additional technical evaluation, the Department of Enterprise Services cannot confirm its accuracy, feasibility, and validity.
2. A conceptual hybrid option entitled "Capitol Lagoon" has been proposed and includes brackish-lake management, modeled after a typical coastal lagoon, which would have saltwater input. This idea remains at a conceptual level without additional design components, aside from lowering of the dam in the winter, but is noted here as an additional hybrid option.
3. A conceptual hybrid option similar to the Dual Basin and the "DELI" options was proposed by another private citizen, including a reconstructed Fifth Avenue Bridge, freshwater lake with swimming area, and a wall with pedestrian path between the restored estuary. Due to the similarities of this option and "DELI," and because additional design components were not provided, it is not included in this figure, but noted here.
4. A proposal for nutrient harvesting has been submitted and could be included as a component of the long-term management options to address existing water quality impairments in Capitol Lake and Budd Inlet.