



2017 Parking Rate Increase

Town Hall Forum

Agenda

- Introductions
- Campus Parking Policy
- How parking rates work
- Parking rate adjustment
- What do parking fees pay for
- Timing of rate adjustment & next steps
- Other information related to parking



Bob Covington
Deputy Director



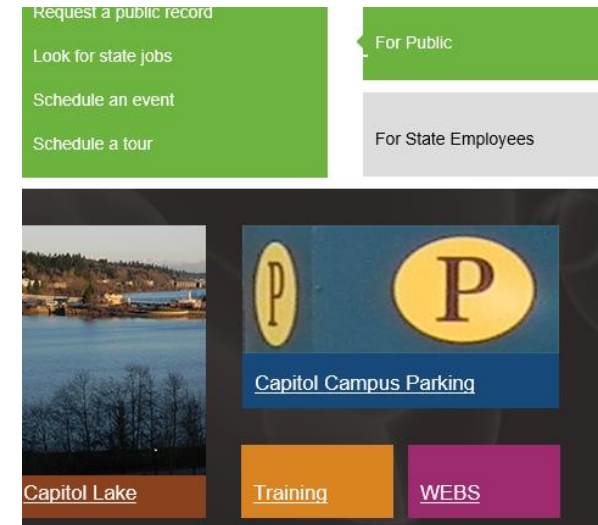
Panel Members

- George Carter III (DES) – Fleet Operations and Parking Manager
- Ronell Witt (DES) – Facilities and Capital Budget Manager
- Darlena Heglund (DES) – Facilities Senior Planner
- Amber Nguyen (DOT) – Policy Analyst/State Agency CTR Program Manager
- Matt Jones (DES) – Physical Security Manager
- Tomy Mollas (DES) – Transportation Demand Manager



How are we communicating the rate change?

- E-mail(s)
 - .GOV delivery
 - Parker distribution lists
- Dedicated Website –
 - <http://www.des.wa.gov>
- Articles in campus publications
- Campus and Agency meetings
 - Town Hall Forums
 - Meetings with agency leadership
 - Notice to unions



Campus Parking Policy

- There is a familiar look and feel to present and past parking requirements;
- Addresses current and future parking needs of our Campus parking customers;
- Agencies will now have the ability to independently decide how best to assign their reserved parking;
- Parking enforcement options are clearly laid out; and
- The reasonable accommodation needs of permanent and temporarily disabled parkers will now be address at the HR agency level.



WAC 200-200-290 (Parking Fees)

(3) The director shall provide notice to state agency stakeholders and capitol campus parkers no later than sixty days prior to any proposed rental parking fees adjustment and provide a thirty-day comment period about the proposed parking fee increases. The director shall consider the comments in adopting adjustments to the rental parking fees.



30 day comment period

- The Department of Enterprise Services is seeking public comments regarding the increase of parking rates on the State Capitol Campus. The 30-day comment period began May 15.
- **Submit comments**
 - Submit on-line:
<https://www.surveymonkey.com/r/parkingrates>
 - Your name and contact information are required.
 - Send your comment to
desparkingrates@des.wa.gov.
 - Call (360) 407-8450.



Overview of Parking Rates

Providing Parking Services on the Capitol Campus

- DES is responsible for the parking facilities on the Capitol Campus. These include the Plaza Garage, Columbia Street Garage, and surface lots on the East and West Campus.
- We're required by law to charge for parking on campus (RCW 43.08.172) while taking into account local market rates for parking, and reducing subsidization of parking to help meet commute trip reduction goals.
 - We have conducted market survey and the proposed rate increase will remain **below market conditions**.
- Parking fees must be set at a rate that meets financial requirements that call for cost recovery of Capitol Campus operating and capital expenses. As these costs increase, Enterprise Services must make adjustments to meet these financial requirements.



Why Now? Amount & Effective Date

Parking rates are set at a level needed to meet the financial requirements of the State Capitol Campus to pay operating and capital expense. That means as costs increase, adjustments are needed to meet financial requirements.

Zone Employee Parking rate increase by

\$10.00

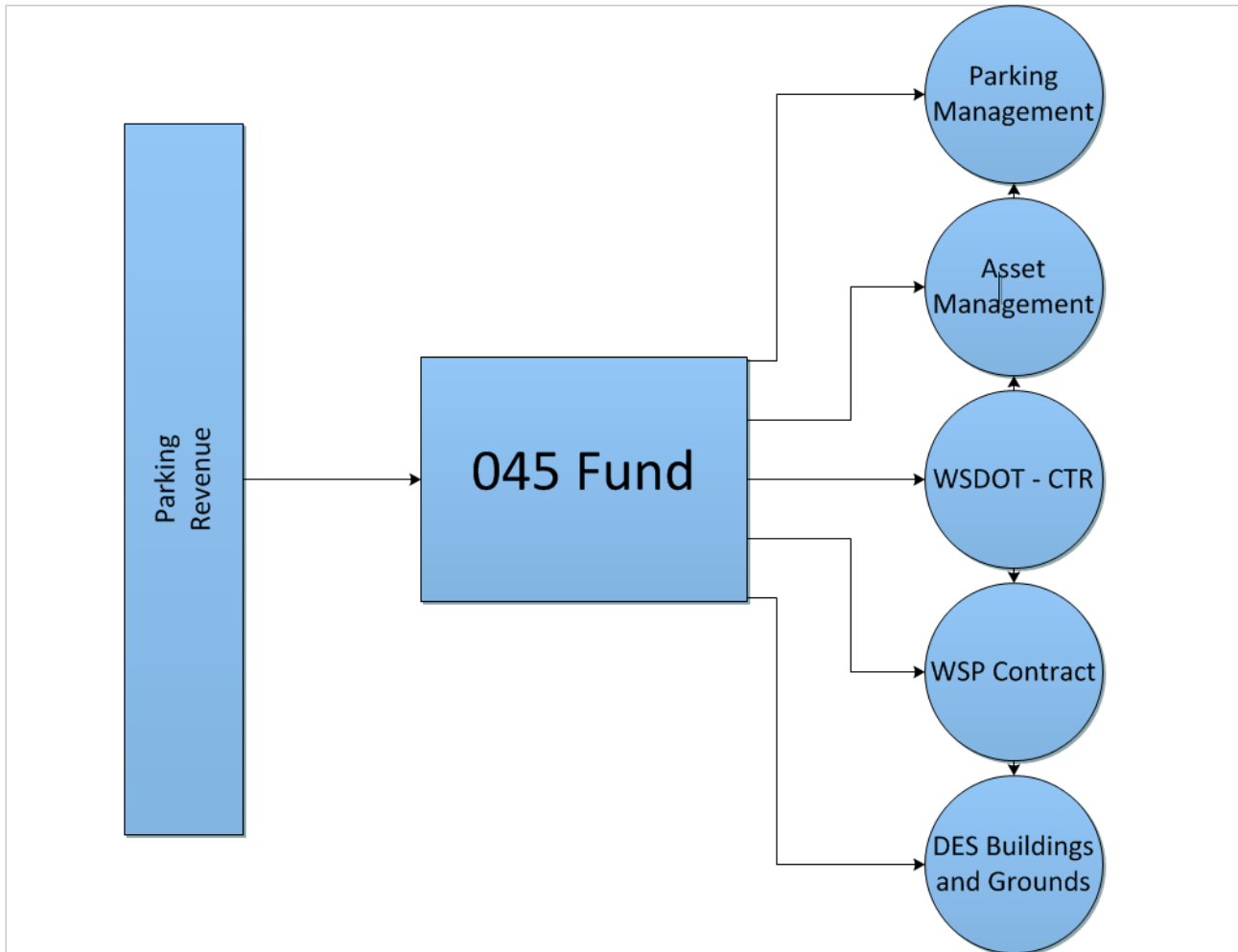
Parking rate increase is set to take effect

July 1st, 2017

All parking rates will increase.

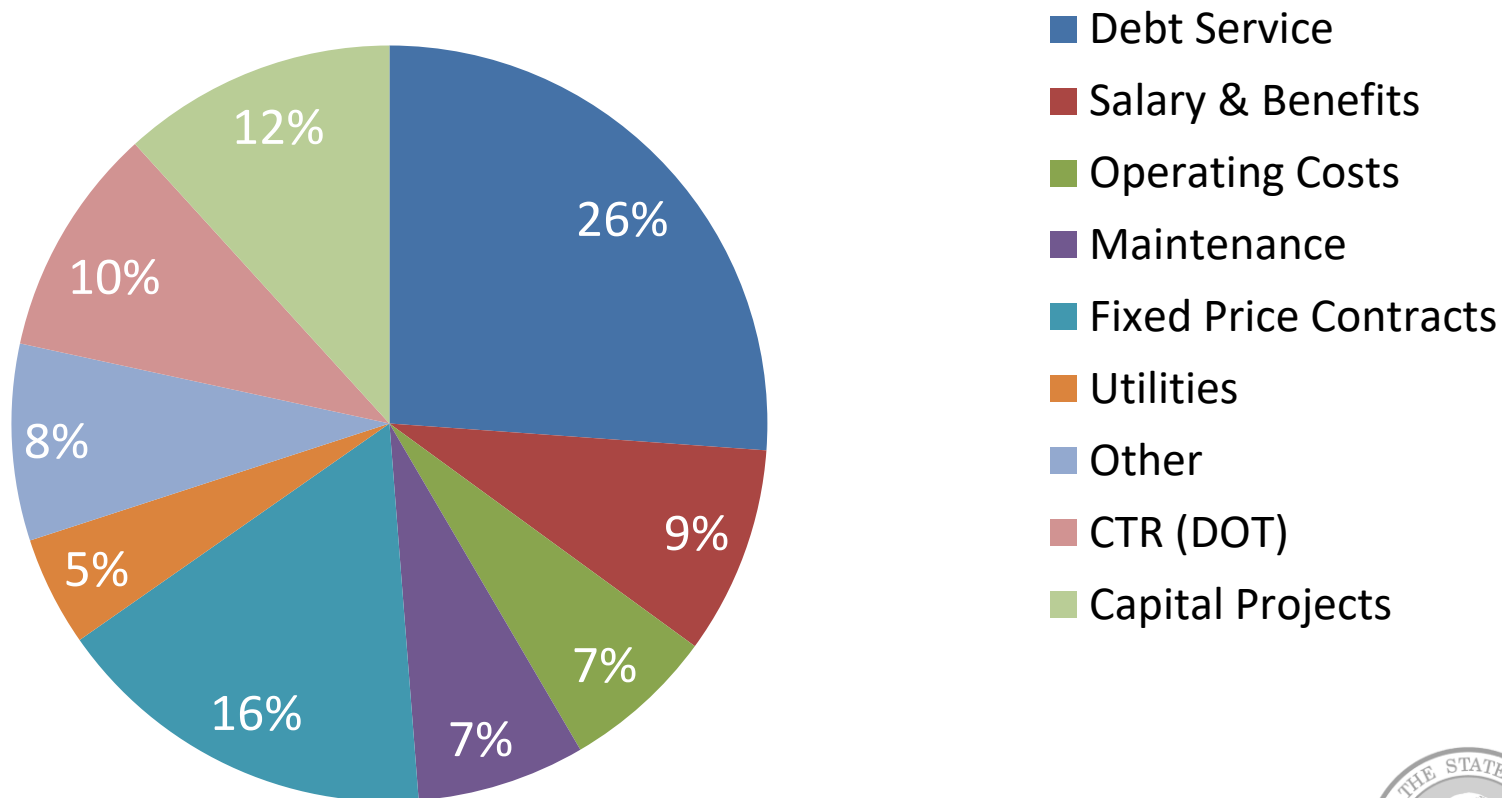


How does the 045 Parking Fund Work?



DES Capitol Campus Garages and Lots Expenditure

State Vehicle Parking Account (Fund 045) 15-17 Biennium Expenditures



What do I need to know or do?

Registered parkers with the Parking Office will automatically see the rate adjustment on the July 25th paycheck.

Parking Options

You now have the option of paying your parking fee with a pre-tax or post-tax deduction.

- Sign up for parking (new employees)
- Notify parking of a temporary car change (before 8:30 am)
- Update existing parking information
- Cancel parking/payroll deduction
- Request a replacement parking permit
- Change/Renew Carpool/Vanpool

(NOTE: use "PENDING" if you have not been assigned an Employee ID yet or are a new parker to the Capitol Campus. You must have an actual Employee ID to register for Carpool/Vanpool.)

Employee ID: (8 digits including leading zeros)
Last Name:

If you need to park in a different lot than the one assigned to you, you need to call the Office of Parking Services at 725-0030.

If you have any problems logging in or questions about parking, please contact the Office of Parking Services.

If you are not a registered parker, or if you need to update your parker information - please visit us at:

<https://fortress.wa.gov/es/apps/Parkers/>



Parking Enforcement

- DES and WSP Partnership
 - Coordinated security and law enforcement approach for the Capitol Campus between DES, WSP and Campus Security Partners
 - Areas of focus are:
 - Law enforcement response and incident management
 - Event support
 - Patrol presence on campus and parks
 - Parking enforcement
- Enterprise Services is implementing an interagency agreement with the State Patrol to increase parking enforcement of [existing regulations](#) on the Capitol Campus by dedicating a full time cadet position to patrol visitor and employee parking.



Department of Transportation – Commuter Trip Reduction Program

- History of CTR Program, staffing overview
- Biennial Statewide CTR report
- Safe-ride Home
- Star Pass
- Annual Reports and Surveys
- Supports local CTR focused groups (TRPC, Intercity Transit, etc....)



Commuter Trip Reduction

- Other options are available
 - Vanpool
 - Carpool
 - Rideshare
 - Head to rideshareonline.com to learn more and sign up
 - Public transit
 - Walking
 - Bicycling
 - Teleworking
 - Speak with your Agency's Employee Transportation Coordinator to learn which option would best fit your needs



Closing

Thank you for your time today

Up Next:

Q&A Session with panel members:

- George Carter III (DES) – Fleet Operations and Parking Manager
- Ronell Witt (DES) – Facilities and Capital Budget Manager
- Darlena Heglund (DES) – Facilities Senior Planner
- Amber Nguyen (DOT) – Policy Analyst/State Agency CTR Program Manager
- Matt Jones (DES) – Physical Security Manager
- Tomy Mollas (DES) – Transportation Demand Manager

