

# M00800R

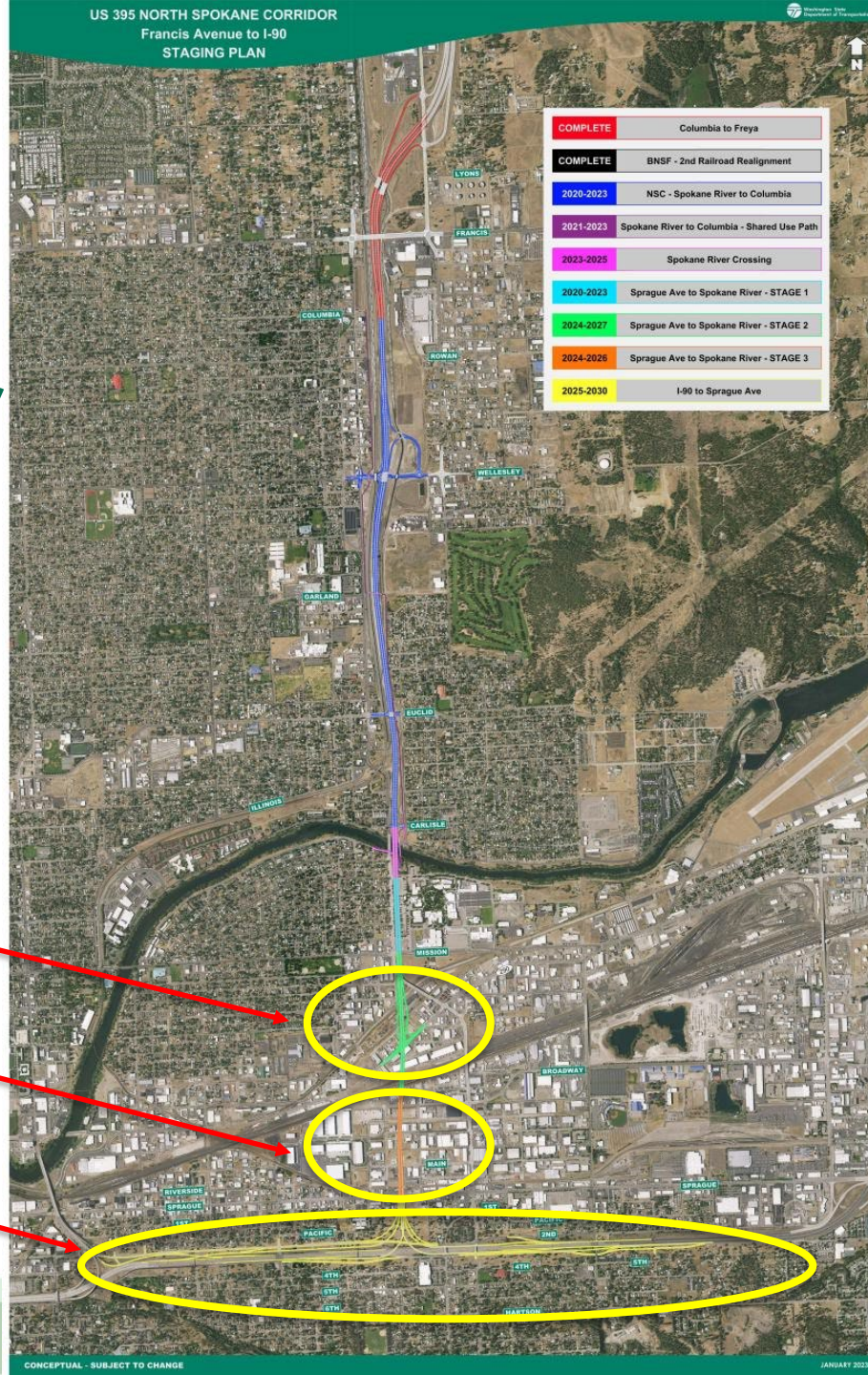
## SR 395 North Spokane Corridor

### Remaining Projects

Stage 2

Stage 3

I-90 Connection

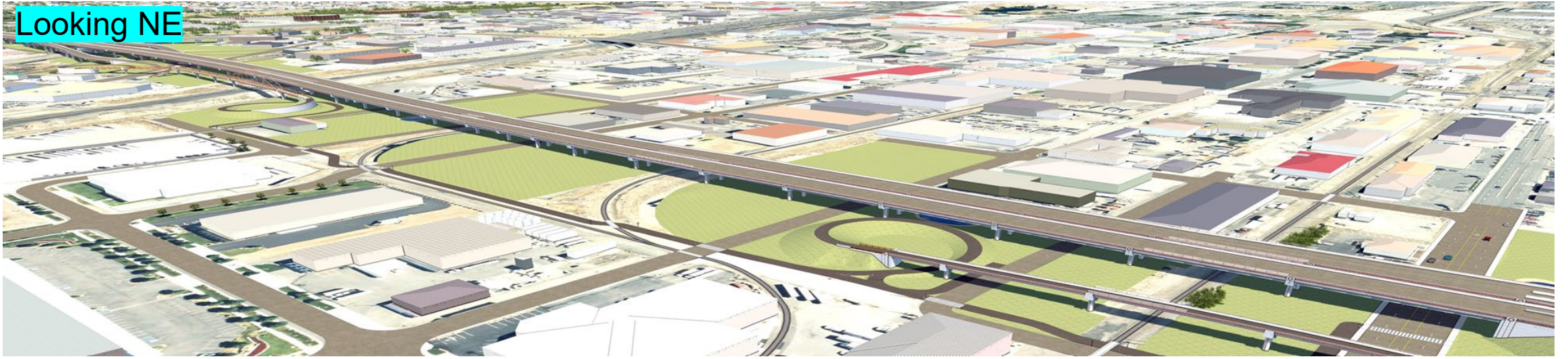




# Stage 3 - US 395/NSC Sprague Ave to Spokane River

Constructs 2 parallel structures for north and southbound NSC.

Looking NE



Looking NW





## Stage 3 - US 395/NSC Sprague Ave to Spokane River

SCOPE: 2 parallel structures, approximately 1200 feet long carrying 2 lanes of traffic each, for north and southbound NSC.

CURRENT STATUS: In 100% PSE review. NEPA complete. Utility and City inspection agreements completed.

SCHEDULE: Advertisement Date July 15, 2024 with construction to begin in fall of 2024. In process of being moved out.

DELIVERY METHOD: Design-Bid-Build. PDMSG signed November 2023.

COSTS: Engineering spent to date \$4.3M. RW spent to date \$360M (NSC total). Anticipated Construction ~\$100 million (2015 Connecting WA revenue package).

RISKS: 2 parcels in condemnation, contaminated material on one parcel.

OPPORTUNITIES: None.

PROJECT DELAY IMPLICATIONS: Delaying the project advertisement will likely bunch remaining NSC projects, potentially tapping out industry resources.

