

# M00800R

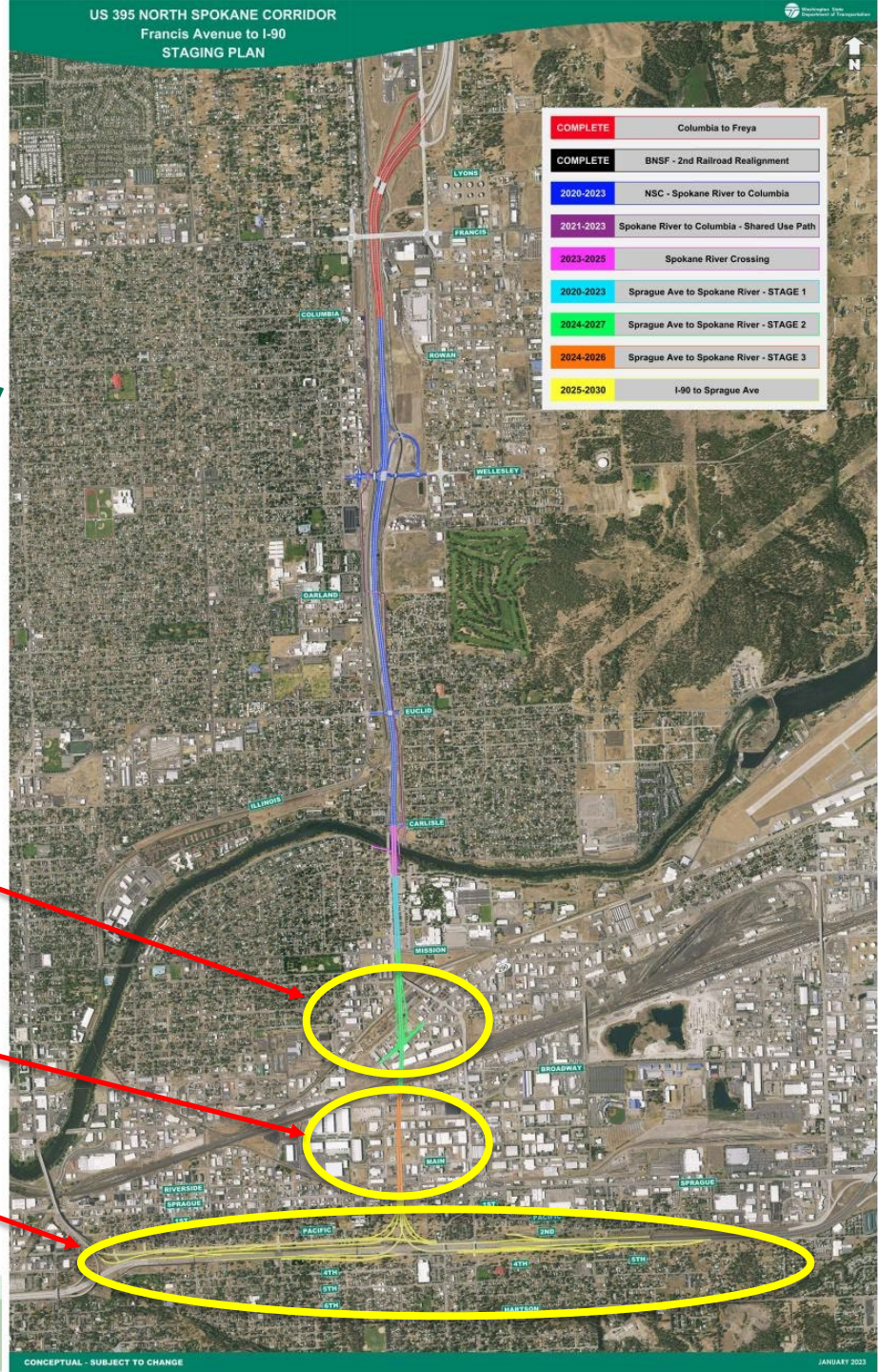
## SR 395 North Spokane Corridor

### Remaining Projects

Stage 2

Stage 3

I-90 Connection



# US 395/NSC Sprague Ave to Spokane River – Stage 2

Scope: Constructs 2 parallel structures approx. 3100 feet long for north and southbound NSC and a partial interchange with SR-290 (Trent Ave.)

Looking SE



# US 395/NSC Sprague Ave to Spokane River – Stage 2

Scope: Constructs 2 parallel structures approx. 3100 feet long for north and southbound NSC and a partial interchange with SR-290 (Trent Ave.)

Looking SW



## US 395/NSC Sprague Ave to Spokane River – Stage 2

SCOPE: New roundabout, local road reconfiguration, utility relocates, pedestrian bridges over Trent Ave. and BNSF Railroad, shared-use trail.

CURRENT STATUS: Approximately 75% design complete. Traffic modeling for operations complete. NEPA complete. City utility and inspection agreements underway. Railroad agreements in progress (2 needed: BNSF and Union Pacific). NPDES Stormwater permit in process. Noise variance in process.

SCHEDULE: Advertisement Date moved from 11/18/24 to 4/14/25 due to legislative proviso. Construction to begin in summer 2025. Completion anticipated by end of 2028.

DELIVERY METHOD: Design-Bid-Build. PDMSG signed November 2023.



## US 395/NSC Sprague Ave to Spokane River – Stage 2 (cont.)

**COSTS:** Engineering spent to date >\$9M. RW spent to date \$360M (NSC total). CEVP (Cost Estimate Validation Process) recently completed. Anticipated Construction ~\$250 million (2015 Connecting WA revenue package).

**RISKS:** Market conditions affecting costs, maintenance of traffic during construction, coordination of adjacent contract, coordination with railroad on construction activities on/over railroad property.

**OPPORTUNITIES:** The configuration of the mainline, interchange at Trent, and RAB intersection is in conjunction with the purchased right-of-way footprint, leaving little to no room for variances.

**PROJECT DELAY IMPLICATIONS:** Delaying the project advertisement will likely bunch together remaining NSC projects, potentially tapping out industry resources.

