



Washington State  
**DEPARTMENT OF  
ENTERPRISE SERVICES**

## **Capitol Campus Design Advisory Committee**

*Marc Daily (2024 Chair, Urban Planner), Kristin Glandon (2024 Vice Chair, Landscape Architect),  
Secretary of State Steve Hobbs, Senator Sam Hunt, Senator Phil Fortunato, Representative Joel McEntire, Alex  
Rolluda (Architect-1), and Jordan Kiel (Architect-2)*

### **REMOTE ACCESS MEETING**

PLEASE ACCESS THE MEETING VIA THE FOLLOWING LINK:

<https://des-wa.zoom.us/j/96696019604?pwd=hhmlQ15pdtLPgfTbCa9wDKEmnXyGL3.1>

Passcode: 065415

**AUGUST 15, 2024**

**Capitol Campus Design Advisory Committee  
Agenda for Meeting, August 15, 2024**

| <b>Time</b> | <b>Agenda Items</b>   | <b>Presenter</b>                                      | <b>Desired Outcome</b>   |
|-------------|---|---|--|
| 10:00       | 1- Call Meeting to Order  | Marc Daily<br>(CCDAC Chair)                           |  |
| 10:05       | 2- Approval of Minutes  | Marc Daily<br>(CCDAC Chair)                           | <b>Decisional</b> - Review and approval of minutes for CCDAC May 23 2024 meeting.  |
| 10:10       | 3- Public Comment Period  | Chris Ferguson,<br>Enterprise<br>Services             | <b>Informational</b> - DES will summarize any public comments received.  |
| 10:30       | 4- Visit Capitol Campus website launch  | Niquette Kelcher,<br>Enterprise<br>Services           | <b>Informational</b> - DES will provide a look at the new visit Capitol Campus webpage   |
| 10:35       | 5- Statue/Artwork removal process   | Linda Kent,<br>Enterprise<br>Services                 | <b>Decisional</b> - CCDAC may make a recommendation to SCC on the process to remove statues/ artwork.                                |
| 10:40       | 6- FPS Overview <ul style="list-style-type: none"> <li>• Capital Projects Overview</li> <li>• 2025-27 Capital project priorities</li> <li>• LCM</li> <li>• General Administration</li> </ul>  | Department of<br>Enterprise<br>Services Staff         | <b>Informational</b> - DES will provide a status update on happenings within Facility Professional Services.                         |
| 11:15       | 7- Buildings and Grounds Overview <ul style="list-style-type: none"> <li>• Olmsted plaque</li> <li>• Big Belly Trash Cans</li> <li>• Bike cages</li> <li>• Marathon Trials Signage</li> </ul> | Department of<br>Enterprise<br>Services Staff         | <b>Informational</b> - DES will provide a status update on happenings within Buildings and Grounds.                                  |
| 11:35       | 8- Campus Memorials update <ul style="list-style-type: none"> <li>• Cal Anderson Memorial</li> <li>• Fallen Firefighter Memorial</li> </ul>   | Aaron Luoma,<br>HBB Seattle<br><br>DNR/WSCFF<br>Staff | <b>Informational</b> - DES will provide status updates on two memorials funded by the Legislature.                                   |
| 11:55       | 9- Building naming process review   | Linda Kent,<br>Enterprise<br>Services                 | <b>Informational</b> - DES will provide a brief on the SCC and CCDAC process to inform recommendations to name and rename buildings. |
| 12:00       | 10- Future Announcements and Adjournment of Meeting   | Marc Daily<br>(CCDAC Chair)                           |  |

**Upcoming Committee Meetings Schedule:**

Next SCC Meeting (2024 Qtr3):

Next CCDAC Meeting (2024 Qtr4):

Thursday, September 19, 2024; 10AM

Thursday, November 14, 2024; 10AM



Washington State  
**DEPARTMENT OF  
ENTERPRISE SERVICES**

## **Capitol Campus Design Advisory Committee**

*Marc Daily (2024 Chair, Urban Planner), Kristin Glandon (2024 Vice Chair, Landscape Architect),  
Secretary of State Steve Hobbs, Senator Sam Hunt, Senator Phil Fortunato, Representative Beth Doglio,  
Representative Joel McEntire, Alex Rolluda (Architect-1), and Jordan Kiel (Architect-2)*

**AUGUST 15, 2024**

(REMOTE ACCESS MEETING)

### **2- Approval of Meeting Minutes**

The draft minutes for the  
CCDAC May 23, 2024 Meeting  
were provided in today's meeting packets.

# CAPITOL CAMPUS DESIGN ADVISORY COMMITTEE MEETING

Remote Access/In-Person Meeting

Olympia, Washington 98504

May 23, 2024

10:00 a.m.

## Draft Minutes

---

### MEMBERS PRESENT:

Marc Daily (Chair), Urban Planner  
Randy Bolerjack (for Secretary of State)  
Representative Beth Doglio  
Kristin Glandon, (Vice Chair) Landscape Architect  
Senator Sam Hunt  
Jordan Kiel, Architect 2  
Alex Rolluda, Architect 1

### MEMBERS ABSENT:

Senator Phil Fortunato  
Representative Joel McEntire

### OTHERS PRESENT:

Jo Aiken, Department of Enterprise Services  
Sarah Bannister, Washington State Senate  
Cynthia Barrett, Department of Enterprise Services  
Emilie Brown, Department of Enterprise Services  
Brent Chapman, Department of Enterprise Services  
Brandon Corneliusen, Department of Enterprise Services  
Amanda Doyle, Office of Secretary of State  
Chris Ferguson, Department of Enterprise Services  
Jessica Goodwin, Department of Enterprise Services  
Valerie Gow, Puget Sound Meeting Services  
Greg Griffith, Olympia Historical Society  
Adam Holdorf, Department of Enterprise Services  
Linda Kent, Department of Enterprise Services

Wesley Kirkman, Department of Enterprise Services  
Kara Klotz, Department of Enterprise Services  
John Lyons, Department of Enterprise Services  
Jeff MacDonald, Department of Enterprise Services  
Kimberly Marshall, Department of Enterprise Services  
Patrick McDonald, Office of the Secretary of State  
Craig McKissick, Office of Legislative Support Services  
Colleen Pehar, Senate  
Maurice Perigo, Department of Enterprise Services  
Robert Poche, Department of Enterprise Services  
Ginny Streeter, Department of Enterprise Services  
James Troyer, Senate

### Welcome and Introductions, Announcements & Approval of Agenda

Chair Marc Daily called the Capitol Campus Design Advisory Committee (CCDAC) virtual meeting to order at 10:02 a.m. A meeting quorum was established.

Jordan Kiel provided self-introduction as a new member of the CCDAC. He serves as Principal at Bassetti Architects in Seattle. Bassetti Architects completes many public works projects using different delivery methods, as well as historic projects to include some projects on Capitol Campus. His partner, Dan Miles recently served on the CCDAC.

Members and staff provided self-introduction.

Chair Daily reviewed the agenda to consider the committee's March 15, 2024 meeting minutes and receive a briefing on a proposed process for removal of a campus statue or memorial. The agenda also includes time to receive public comments.

Senator Hunt requested adding a future discussion on the process for naming buildings on Capitol Campus as the current process is convoluted and not followed. Although he does not object to the name of the new Newhouse Building, he does object to the process. For example, if the committee and the State Capitol Committee (SCC) approve the building name and the Legislature does not approve the name, it appears to



represent just another committee report the Legislature does not adopt. The process has been circumvented. He suggested adding a discussion to the next meeting agenda to address ways to resolve the situation.

***Senator Hunt moved, seconded by Randy Bolerjack, to approve the agenda as published. A voice vote approved the motion unanimously.***

**Approval of Minutes – March 15, 2024 – Action**

***Kristen Glandon moved, seconded by Alex Rolluda, to approve the minutes of March 15, 2024 as published. A voice vote approved the motion. Joel Kiel abstained.***

**Public Comment Period – Information**

Chris Ferguson, Government Relations Coordinator, Department of Enterprise Services (DES), reviewed the format for offering public comment during a hybrid meeting. Public comment is limited to two minutes.

**Greg Griffith, Olympia Historical Society**, referred to a letter sent to the committee regarding interpretive panels in Marathon Park to commemorate the Olympic Women’s Marathon Trials held in 1984 and the recent 40<sup>th</sup> anniversary celebration of that event. The Olympia Historical Society supports the efforts of the Olympic Trials Committee to pursue the request to the CCDAC and SCC to add another interpretive panel to the existing panel at Marathon Park and restore the existing interpretive panel. Additionally, he asked the committee to consider moving the panels closer to the restrooms at Marathon Park for accessibility to the public.

**Campus Statute or Memorial Removal Process – Information**

Chair Daily invited Linda Kent, Chief External Affairs Officer, to provide information on the process for campus statue or memorial removals.

Ms. Kent reported on the need for establishing a process for removing a statue, work of art, or a memorial from the campus. The proposal was prompted by a replacement of the Marcus Whitman statue in the Legislative Building with the Billy Frank Jr. statue reflecting the Washington State contribution to the National Statuary Hall collection. When a replacement occurs at the Capitol Building in Washington, D.C., the state also takes a similar action albeit lacking a clear process for removal and replacement. Both the Washington Administrative Code (WAC) and the Revised Code of Washington (RCW) do not address removal of statutes, memorials, or works of art. To develop a process, staff engaged with representatives from the Washington State Arts Commission (ArtsWA), State Historical Society, and the Department of Archeology and Historic Preservation (DAHP) to vet a draft process for consideration.

Ms. Kent reviewed the timeline and necessary steps for adoption of a process. DES plans to convene a core group comprised of representatives from ArtsWA, State Historical Society, DAHP, original artist if available, and any other key stakeholders recommended by the core group. It is likely legislators and others involved in the Billy Frank Jr. Statuary Hall Committee would be invited to participate. The core group would be responsible for establishing objectives and criteria relocation sites must satisfy, identify potential sites, measure potential sites against the objectives and criteria, identify storage preference, and prioritize options for review and discussion by CCDAC and SCC. DES plans to release public notification when both committees are scheduled to render a decision to ensure the public is aware and can provide input on the prioritized list.

The timeline for taking advantage of the new process, if approved, would be during the second quarter of 2025 to replace the Whitman statue.

Senator Hunt asked whether anyone has expressed interest in possessing the Whitman statue. Ms. Kent advised that no one has stepped forward at this time.

Mr. Kiel asked how the process is initiated. Ms. Kent responded that the process is initiated when DES is directed by the Legislature to remove a statue or work of art from the campus.

**Future Announcements and Adjournment of Meeting – Action**

Chair Daily reported the next meeting of the SCC is Thursday, June 27, 2024 at 10 a.m. The next meeting of the CCDAC is Thursday, August 15, 2024 at 10 a.m. Both meeting will be hybrid meetings.

Representative Doglio noted that a number of staff members often discuss the status of bicycle parking on the campus. As a fellow bicycle commuter to the campus, she asked that the committee receive an update on bicycling on campus with consideration of whether additional resources are required to serve employees who commute by bicycle to the campus.

Mr. Ferguson cited a question from a member of the public asking about the direction from the Legislature to remove the Marcus Whitman statue from the campus. Ms. Kent cited House Bill 1372 and Substitute House Bill 1639 as the guidance for removal of the statue from the Legislative Building to be replaced with the Billy Frank Jr. statue. She offered to provide via the chat function some links for additional information.

Mr. Ferguson confirmed he would share the link with those attending the meeting.

Mr. Rolluda asked to receive an update on current construction activities on Capitol Campus. Ms. Kent affirmed staff would schedule an update at the committee's next meeting.

**With there being no further business, Chair Daily adjourned the meeting at 10:26 a.m.**

Prepared by Valerie L. Gow, Recording Secretary/President  
Puget Sound Meeting Services, psmsoly@earthlink.net



Washington State  
**DEPARTMENT OF  
ENTERPRISE SERVICES**

## **Capitol Campus Design Advisory Committee**

*Marc Daily (2024 Chair, Urban Planner), Kristin Glandon (2024 Vice Chair, Landscape Architect),  
Secretary of State Steve Hobbs, Senator Sam Hunt, Senator Phil Fortunato, Representative Beth Doglio,  
Representative Joel McEntire, Alex Rolluda (Architect-1), and Jordan Kiel (Architect- 2)*

**AUGUST 15, 2024**

(REMOTE ACCESS MEETING)

**3 – Public Comment Period**



**DES** Washington State  
DEPARTMENT OF  
ENTERPRISE SERVICES

# Public Comment Period

**Chris Ferguson, External Affairs Coordinator**  
**External Affairs**

*AUGUST 2024*

1

## PUBLIC COMMENT PERIOD INSTRUCTIONS

**Please find the below steps to participate during the public comment period:**

- To request an opportunity to speak, please type your first and last name in the Q&A section of the zoom webinar.
- DES Staff will let the CCDAC chair know who has signed up for public testimony.
- DES Staff will allow the individual to speak and ask that they unmute their mic to do so.
- Failure to unmute may forfeit the individual's opportunity to speak. Forfeiture will be at discretion of the CCDAC chair.
- Individuals will be given 2 minutes to provide public testimony
- **Please note:** If you submitted written testimony via email, your letter was distributed and please only summarize your comments.

2

# THANK YOU



SCC-  
CCDAPublicComments@d  
es.wa.gov



(360)790-7758



Des.wa.gov



Washington State  
**DEPARTMENT OF  
ENTERPRISE SERVICES**

## **Capitol Campus Design Advisory Committee**

*Marc Daily (2024 Chair, Urban Planner), Kristin Glandon (2024 Vice Chair, Landscape Architect),  
Secretary of State Steve Hobbs, Senator Sam Hunt, Senator Phil Fortunato, Representative Beth Doglio,  
Representative Joel McEntire, Alex Rolluda (Architect-1), and Jordan Kiel (Architect- 2)*

**AUGUST 15, 2024**

(REMOTE ACCESS MEETING)

**4 – Visit Capitol Campus webpage launch**

**INFORMATIONAL ITEM**



## Capitol Campus Advisory Committee

August 15, 2024

### **4- Visit Capitol Campus Website Launch**

Purpose: **Informational**

Sponsor(s): Washington State Department of Enterprise Services  
Presenters: Niquette Kelcher, Digital and Creative Services Director,  
[Niquette.Kelcher@des.wa.gov](mailto:Niquette.Kelcher@des.wa.gov), (360)701-9192

#### **Description:**

The Department of Enterprise Services (DES) has launched a brand new website that showcases all that makes the Capitol a standout in the nation.

The new site (<https://capitol.wa.gov/>) makes it easy for people to discover, explore, request event space, and plan their visit to the beautiful and historic Capitol Campus. Highlighting the beauty of the campus and its role as a center of civic engagement, the website features the campus' artwork, memorials and monuments, trees, parks and gardens, and provides visitor information about parking and tours.

The new [Capitol Campus](#) website was announced broadly to the public and stakeholders on July 29<sup>th</sup>. Information for campus employees and tenant agencies remains on [des.wa.gov](https://des.wa.gov).

#### **Next Steps:**

- Website will be presented in front of SCC as informational.
- No additional next steps as website is currently active.

#### **Requested Action:**

##### **INFORMATIONAL ITEM**

This is an informational item. No action by CCDAC is necessary.

#### **List of Attachments:**

Attachment: No Attachments.



Washington State  
**DEPARTMENT OF  
ENTERPRISE SERVICES**

## **Capitol Campus Design Advisory Committee**

*Marc Daily (2024 Chair, Urban Planner), Kristin Glandon (2024 Vice Chair, Landscape Architect),  
Secretary of State Steve Hobbs, Senator Sam Hunt, Senator Phil Fortunato, Representative Beth Doglio,  
Representative Joel McEntire, Alex Rolluda (Architect-1), and Jordan Kiel (Architect- 2)*

**AUGUST 15, 2024**

(REMOTE ACCESS MEETING)

### **5 – Statue/Artwork Removal Process**

**DECISIONAL ITEM**





## Capitol Campus Advisory Committee

August 15, 2024

### **5- Statue/Artwork Removal Process**

Purpose: **Decisional**

Sponsor(s): Washington State Department of Enterprise Services  
Presenters: Linda Kent, Chief External Affairs Officer, (360)972-6413,  
[Linda.Kent@des.wa.gov](mailto:Linda.Kent@des.wa.gov)

#### **Description:**

During the 2021-2022 legislative session, the Legislature passed [ESHB 1372](#), which replaces the statue of Marcus Whitman in the National Statuary Hall in Washington D.C. with a statue of Nisqually Tribal member Billy Frank Jr., who dedicated his life to advocating for equality, justice and environmental protections. This change would also be reflected in the represented sculptures in Washington State Legislative Building. Subsequently, the Legislature also passed [2SHB 1639](#) during the 2023-2024 legislative session, making changes to the National Statuary Hall selection committee.

The Department of Enterprise Services (DES) in coordination with Department of Archaeology and Historic Preservation (DAHP), the Washington State Arts Commission (ArtsWA), and the Washington State Historical Society (WSHS), developed a draft process for removing statues and memorials from the Capitol Campus once directed to do so by the Legislature. The process includes assembling a core group from DAHP, ArtsWA, WSHS and the artist if available as well as other key stakeholders identified by the core group to develop a prioritized list of relocation options for CCDAC and SCC to evaluate. Once a process is approved, it will be used for the Whitman statue removal as well as for any future memorials or statues that DES is directed by the Legislature to remove from the Capitol Campus.

#### **Next Steps:**

- The proposed process may be recommended by CCDAC at its 3<sup>rd</sup> quarter meeting.
- The proposed process if recommended will go before SCC at its 3<sup>rd</sup> quarter meeting as decisional.

#### **Requested Action:**

**DECISIONAL ITEM** – CCDAC may recommend the proposed process to the State Capitol Committee at its next regularly scheduled meeting.

*Move to recommend approval by the Capitol Campus Design Advisory Committee of the proposed process to remove Statues or Artwork to the State Capitol Committee at its next regularly scheduled meeting.*

#### **List of Attachments:**

Attachment: 5B- Statue/Artwork removal process fact sheet, 5C- Statue/Artwork removal slide deck



# STATUE OR MEMORIAL

## REMOVAL PROCESS

UPDATED: 2024-06-13

### Purpose

Create a clear process for removing a statue or work of art from the Capitol Campus, once directed by the Legislature.

### Steps to put process in place

#### Engage stakeholders to vet proposed process:

1. Engage the Washington State Arts Commission (Arts WA), the WA State Historical Society, (WSHS) & Department of Archaeology and Historic Preservation (DAHP) to vet a draft process that can be carried forward if other items are removed or replaced in the future.
2. Vet the draft process with Capitol Campus Design Advisory Committee (CCDAC) and State Capitol Committee (SCC), during their second and third quarter meetings (proposed process needs to appear at each committee once as informational and a second time as decisional).

### Proposed process

This proposed process begins once direction is given by the Legislature to remove a memorial or work of art:

1. DES convenes core group (Arts WA, WSHS, DAHP, the original artist if available and per WAC 200-230-040 + other key stakeholders as recommended by the core group) to identify and prioritize relocation sites.
  - Core group duties:
    - Set key objectives and criteria that any relocation site should meet. Criteria will include basic logistical considerations (e.g., can a space accommodate the size of an item)
    - Identify potential relocation sites
    - Measure potential sites against key objectives and criteria

- Identify storage preferences as a last resort option
  - Prioritize the options for review and decision by CCDAC and SCC
2. The prioritized list is brought before CCDAC and SCC for public comment and approval.
- A) The list is presented to CCDAC as informational.
- B) The list is presented to SCC as informational.
- C) The list is presented a second time to CCDAC as a decisional agenda item for recommendation to the SCC. At this point:
- DES sends broad public notification of prioritized option(s) reviewed when the CCDAC agenda is published (2 weeks prior to meeting). The notice includes:
    - Information about the key objectives and criteria option(s) were measured against
    - The prioritized list
    - Comment Deadline
    - How to comment (Send public comments to [SCCCCDACPublicComments@des.wa.gov](mailto:SCCCCDACPublicComments@des.wa.gov) or provide testimony at CCDAC meeting during public comment period
  - CCDAC will consider the proposed prioritized list and option(s), including public comment, and share its recommendation to SCC.
- D) The approved prioritized list and option(s) are and CCDAC recommendation are presented to SCC as a decisional agenda item.
- DES sends broad public notification of prioritized option(s) reviewed when the SCC agenda is published (2 weeks prior to meeting). The notice includes:
    - Information about the key objectives and criteria option(s) were measured against
    - The prioritized list
    - Comment Deadline
    - How to comment (Send public comments to [SCCCCDACPublicComments@des.wa.gov](mailto:SCCCCDACPublicComments@des.wa.gov) or provide testimony at CCDAC meeting during public comment period
  - SCC considers CCDAC recommendation(s) and public comment.
  - SCC and DES Director share recommendation with the Legislature.
3. **Legislative Process (if needed)**

DES submits a capital budget request to the Legislature for the removal process, or for removal and installation if an item is being replaced, unless funds have already been authorized by the Legislature. The request would include design for the physical removal process by the Campus Conservator.



# Statue or work of art removal process

LINDA KENT, DES CHIEF EXTERNAL AFFAIRS OFFICER

*August 2024*

1

## PURPOSE

Create a clear process for removing a statue or work of art from the Capitol Campus, once directed by the Legislature.

2

## REGULATORY BACKGROUND

- Existing RCWs and WACs are silent on commemorative works removal process.
- No process exists.

3

## STEPS TO PUT PROCESS IN PLACE

1. Engaged ArtsWA, State Historical Society, & Department of Archeology and Historic Preservation to vet a draft process that can be carried forward if other items are removed or replaced in the future.
2. Bring to CCDAC and SCC

4

## DRAFT PROCESS – STEP 1

1. DES convenes core group (ArtsWA, Historical Society, DAHP, and per WAC 200-230-040 the original artist if available + other key stakeholders as recommended by the core group to identify and prioritize relocation sites.
  - Core group duties:
    - Set key objectives and criteria that any relocation site should meet. Criteria will include basic logistical considerations (e.g., can a space accommodate the size of an item)
    - Identify potential relocation sites
    - Measure potential sites against key objectives and criteria
    - Identify storage preferences as a last resort option
    - Prioritize the options for review and decision by CCDAC and SCC

5

## DRAFT PROCESS – STEP 2

The prioritized list is brought before CCDAC and SCC for public comment and approval.

1. The list is presented to CCDAC and SCC as informational.
2. The list is presented a second time to CCDAC and SCC as decisional.

**When presented as decisional, DES sends broad public notice which includes:**

- The prioritized list
- Information about the key objectives and criteria option(s) were measured against
- Comment Deadline and how to comment

6



# THANK YOU



[linda.kent@des.wa.gov](mailto:linda.kent@des.wa.gov)



360-972-6413



[des.wa.gov](http://des.wa.gov)



Washington State  
**DEPARTMENT OF  
ENTERPRISE SERVICES**

## **Capitol Campus Design Advisory Committee**

*Marc Daily (2024 Chair, Urban Planner), Kristin Glandon (2024 Vice Chair, Landscape Architect),  
Secretary of State Steve Hobbs, Senator Sam Hunt, Senator Phil Fortunato, Representative Beth Doglio,  
Representative Joel McEntire, Alex Rolluda (Architect-1), and Jordan Kiel (Architect- 2)*

**AUGUST 15, 2024**

(REMOTE ACCESS MEETING)

### **6 – Facility Professional Services Overview**

#### **INFORMATIONAL ITEMS**

- A. CAPITAL PROJECTS OVERVIEW**
- B. 2025-27 CAPITAL PROJECT PRIORITIES**
- C. LEGISLATIVE CAMPUS MODERNIZATION (LCM)**
- D. GENERAL ADMINISTRATION BUILDING UPDATE (GA)**



## Capitol Campus Design Advisory Committee

August 15, 2024

### **6A- Capital Projects Update**

Purpose: **Informational**

Sponsor(s): Bill Frare, FPS Assistant Director, and  
Oliver Wu, FPS Planning and Project Delivery Program Manager

Department(s): Department of Enterprise Services

Presenters: Oliver Wu, [oliver.wu@des.wa.gov](mailto:oliver.wu@des.wa.gov)

#### **Description:**

CCDAC has expressed interest in Enterprise Services providing routine status updates on several key capital improvement projects. The status and significant accomplishments are as follows for these key projects:

#### **2021-23 Capital Project Accomplishments:**

##### **L&I/WSDA Laboratory Health and Safety Training Center (18-057)**

- New laboratory facility for Labor & Industries
- Washington State Department of Agriculture is a co-tenant
- Pursuing Net-Zero Capable
- Substantial Completion was July 2023
- Currently installing a solar photovoltaic project

##### **Capitol Campus Child Care - Photovoltaic Panels (18-035)**

- Installed an 81kW solar photovoltaic system
- Net-Zero Capable facility
- Project was completed in September 2021

##### **Legislative Building Cleaning- John A. Cherberg Building**

- Cherberg Building cleaned in 2022
- Minor repairs to stone façade completed
- Window sealants were replaced
- Substantial Completion was September 2022

##### **Elevator Modernization Improvements**

- Elevators modernized and replaced:

- Capitol Court, Elevator #1
- Temple of Justice, Elevator #2
- Plaza Garage, Elevator #1
- Projects were completed in 2023

### **DAS Plaza Garage (18-725) & DAS NRB, DOT, Columbia Garages (20-271)**

- Installed new digital antenna systems within:
  - Plaza Garage
  - Department of Transportation Garage
  - Natural Resources Building Garage
  - Columbia Garage
- Substantial Completion was October 2023

### **Planned 2023-25 Capital Projects (Underway):**

#### **New Buildings & Grounds Maintenance Facility (24-015)**

- Selected Freiheit Architecture to complete design drawings by August 2024
- This project will construct a new maintenance facility for Buildings & Grounds
- Project delivery method is design-bid-build
- Project bidding is scheduled for September 2024
- Substantial completion is planned for August 2025

#### **Legislative Building – Restore Chamber Skylights (24-034)**

- Architectural Resources Group has been selected to complete design drawings by December 2024
- This project will remove the metal plates and restore the original skylights, bringing back the natural light into the Senate and House Chambers
- Project delivery method is design-bid-build
- Project bidding is scheduled for July 2025
- Substantial completion is planned for June 2027

#### **Elevator Modernization Improvements**

- Elevators to be modernized and replaced:
  - Temple of Justice, Elevator #1
  - Legislative Building, Elevator #5
  - Legislative Building, Elevator #6
  - Insurance Building, Elevator #1
- Design efforts have started with Stemper Architects the selected firm
- Design drawings to be completed by September 2024
- Construction for these projects have started as of June 2024 with the TOJ Elevator, with other construction starts occurring in November 2024
- Substantial Completion for these projects will vary and be completed in 2025

#### **Highway License Building – Critical Fire System Upgrades (24-019)**

- Selected Tres West Engineers to complete design drawings in April 2024
- This project will replace the Fire Alarm System in the Highway License Building
- Project delivery method is design-bid-build
- Project bid was complete in April 2024, and the selected firm is JA Morris Construction
- Substantial completion is planned for March 2025

#### **Legislative Building Cleaning – O'Brien Building (24-036)**

- Selected SHKS Architects to complete design drawings by September 2024

- This project will include the cleaning of the stone façade, window sealant replacement, and very minor stone repairs.
- Project delivery method is design-bid-build
- Project is delayed due to discovery of asbestos in window sealants and caulking
- Currently evaluating the mitigation strategy to incorporate into bid documents
- Substantial completion is planned for late 2025

#### **Old Capitol Building Roof Replacement (24-013)**

- Selected SHKS Architect to complete design drawings in September 2024
- This project will replace the roofing material and maintain historic character
- Project delivery method is design-bid-build
- Project bidding is scheduled for August 2025
- Substantial completion is planned for November 2026

#### **Modular Building Critical Repairs and Upgrades (24-024)**

- Selected Rolluda Architects to complete design drawings in December 2024
- This project will retrofit and rehabilitate the Tumwater Modular Building
- Project delivery method is design-bid-build
- Project bidding is scheduled for July 2025
- Substantial completion is planned for October 2026

#### **Capitol Campus Security & Safety Enhancements**

- These programmatic projects include the following security and safety projects:
  - Capitol Campus Door Access Control Exterior Improvements
  - Exec Residence - Fencing, Gates, and Bollards
  - Exec Residence - Video Surveillance and Lighting
  - Capitol campus Security Wedge Barrier - Water Street
- Design efforts took place between September 2021 and November 2022.
- Project delivery method is design-bid-build
- Construction of these projects have started in July 2023 and all projects will be complete by June 2025.

#### **Temple of Justice Systems Renewal and Updates (22-113)**

- This project includes improvements to the HVAC, plumbing, lighting and security systems.
- Construction began in April 2022, and will be complete by September 2024.

#### **DES 2023-25 Minor Works Projects**

- The following minor works are underway:
  - Legislative Building - Exterior Safety Railings
  - Temple of Justice - Exterior Safety Railings
  - Campus Signage and Wayfinding
  - Highway License Building – HVAC Recommissioning
  - Archives – Investigate & Repair Sewer Lines
  - Capitol Way Pedestrian Bridge Repair
  - Cherberg-O'Brien – Replace UST Monitor
  - Highway License Building -Plaza Garage – Replace Failed Tunnel Skylight
  - Legislative Building - Basement Water Infiltration
  - Dolliver - Replace Loading Dock Roof
  - Dolliver - Roof Fall Protection Upgrades
  - Powerhouse - Replace Sewer Main
- Projects are at various stages of design, bidding, and construction with anticipated completion by June 2025.

**Next Steps:**

Enterprise Services will provide project updates to CCDAC and SCC at future regularly scheduled meetings.

**Requested Action:**

This is an informational item. No action by CCDAC is necessary.

**List of Attachments:**

Attachment: 6AA: Capital Projects Update Presentation

# CAPITAL PROJECTS UPDATE

CCDAC Aug 15, 2024 Meeting  
Oliver Wu, PPD Program Manager  
Facility Professional Services



1

## CAPITAL PROJECT UPDATE

### **2021-23 Major Project Status and Closeouts**

- Reappropriated 2019-21 Capital Projects
- New Projects funded in 2021-23

### **2023-25 Agency Capital Projects**

- Major Works (>\$1M)
  - Preservation Projects
  - Programmatic Projects
- Reappropriated 2021-23 Capital Projects
- Minor Works (<\$1M)

2

# 2021-23 ACCOMPLISHMENTS

3

## 2021-23 ACCOMPLISHMENTS

### L&I/WSDA Lab Health & Safety Training Center (18-507)

- New laboratory facility for L&I
- WSDA is a co-tenant
- Pursuing Net-Zero Capable
- Substantial Completion was July 2023



### Capitol Campus Childcare Center Photovoltaics Panels (18-035)

- Installed 81kW photovoltaic system
- Net-Zero capable facility
- Project was completed in Sept 2021

4



## 2021-23 ACCOMPLISHMENTS

### Legislative Building Cleaning - Cherberg (22-114)

- Cherberg Building cleaned in 2022
- Minor repairs to stone façade completed
- Window sealants were replaced
- Substantial Completion was Sept 2022



### Elevator Modernizations (18-548)

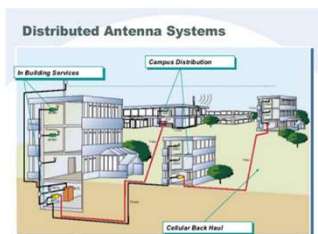
- Elevators modernized and replaced:
  - Capitol Court, Elevator #1
  - Temple of Justice, Elevator #2
  - Plaza Garage, Elevator #1
- Projects were completed in 2023

5

## 2021-23 ACCOMPLISHMENTS

### DAS Campus Garages (18-725 and 20-271)

- Installed new digital antenna systems within:
  - Plaza Garage
  - Department of Transportation Garage
  - Natural Resources Building Garage
  - Columbia Garage
- Substantial Completion was October 2023



6

# 2023-25 CAPITAL PROJECTS

7

## CAPITAL PROJECT UPDATE

### Project Name:

New Building & Grounds Maintenance Facility (24-015)

### Key Milestones:

- Design Period: Jan 2024 - Aug 2024
- Bid Date: Sep 2024
- Construction Period: Oct 2024 - Aug 2025

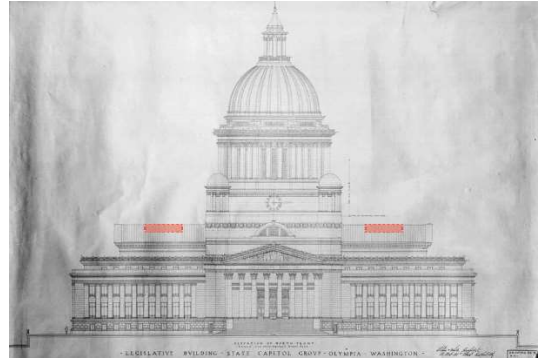


8

# CAPITAL PROJECT UPDATE

## Project Name:

Legislative Building - Restore Chamber Skylights (24-034)



## Key Milestones:

- Design Period: Dec 2023 – Dec 2024
- Bid Date: July 2025
- Construction Period: Sept 2025 – Jun 2027



9

# CAPITAL PROJECT UPDATE

## Project Name:

Elevator Modernization-Temple of Justice – Elevator #1 (24-040)



## Key Milestones:

- Design Period: Jun 2023 – May 2024
- Bid Date: May 2024
- Construction Period: Jun 2024 - Jun 2025



10

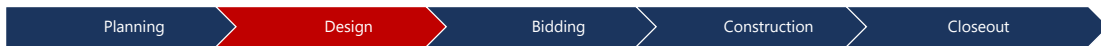
## CAPITAL PROJECT UPDATE

### Project Name:

Legislative Building – Elevator No. 5 (24-014)

### Key Milestones:

- Design Period: Dec 2023 - Sep 2024
- Bid Date: Oct 2024
- Construction Period: Nov 2024 - Sep 2025



11

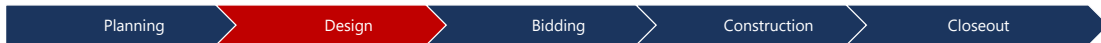
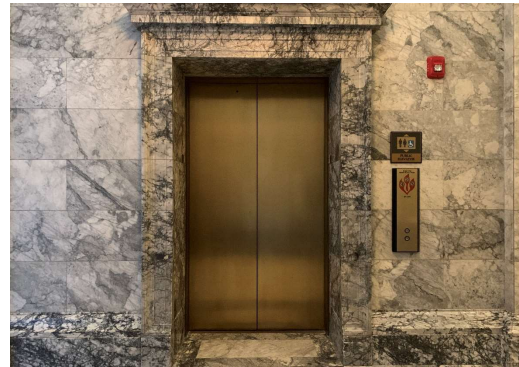
## CAPITAL PROJECT UPDATE

### Project Name:

Legislative Building – Elevator No. 6 (24-021)

### Key Milestones:

- Design Period: Dec 2023 - Sep 2024
- Bid Date: Oct 2024
- Construction Period: Nov 2024 - Nov 2025



12

## CAPITAL PROJECT UPDATE

### Project Name:

Insurance Building Elevator No. 1  
Modernization Project (24-018)



### Key Milestones:

- Design Period: Feb 2024 -Sept 2024
- Bid Date: Oct 2024
- Construction Period: Nov 2024- Sept 2025



13

## CAPITAL PROJECT UPDATE

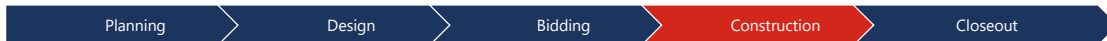
### Project Name:

Highway License Building - Critical Fire System  
Upgrades (24-019)



### Key Milestones:

- Design Period: Sep 2023- Apr 2024
- Bid Date: Apr 2024
- Construction Period: Jun 2024 - Mar 2025



14

# CAPITAL PROJECT UPDATE

## Project Name:

Legislative Building Cleaning - O'Brien Building (24-036)



## Key Milestones:

- Design Period: Oct 2023 – Sep 2024
- Bid Date: TBD
- Construction Period: TBD



15

# CAPITAL PROJECT UPDATE

## Project Name:

Old Capitol Building - Roof Replacement (24-013)



## Key Milestones:

- Design Period: Jan 2024 – May 2025
- Bid Date: Aug 2025
- Construction Period: Sep 2025 – Nov 2026



16



# CAPITAL PROJECT UPDATE

## Project Name:

Modular Building Critical Repairs and Upgrades (24-024)



## Key Milestones:

- Design Period: Mar 2024 - Dec 2024
- Bid Date: July 2025
- Construction Period: Aug 2025 – Oct 2026



17

# CAPITAL PROJECT UPDATE

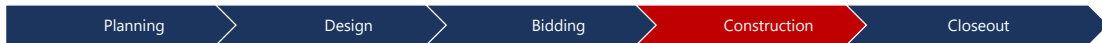
## Project Name:

Capitol Campus Door Access Control Exterior Improvements (22-155)



## Key Milestones:

- Design Period: Dec 2021 – Jun 2022
- Bid Date: Oct 2022
- Construction Period: Jul 2023 – Sep 2024



18

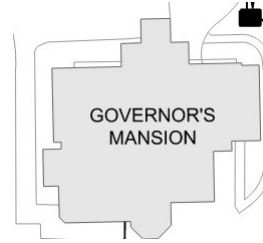
# CAPITAL PROJECT UPDATE

## Project Name:

Executive Residence - Fencing, Gates, and Bollards (22-160)

## Key Milestones:

- Design Period: Jan 2022 – Nov 2022
- Bid Date: July 2024
- Construction Period: Aug 2024 – Jun 2025



19

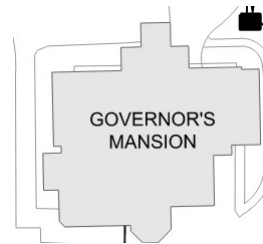
# CAPITAL PROJECT UPDATE

## Project Name:

Executive Residence  
- Video Surveillance and Lighting (22-152)

## Key Milestones:

- Design Period: Jan 2022 – Nov 2022
- Bid Date: July 2024
- Construction Period: Aug 2024 – Jun 2025



20



# CAPITAL PROJECT UPDATE

## Project Name:

Capitol Campus Security- Wedge Barrier (22-105)

## Key Milestones:

- Design Period: Sep 2021 - Aug 2022
- Bid Date: Mar 2024
- Construction Period: Jun 2024 - Jun 2025



21

# CAPITAL PROJECT UPDATE

## Project Name:

Temple Of Justice- Systems Renewal & Updates (22-113)

## Key Milestones:

- Design Period: July 2021 - May 2022
- Bid Date: May 2022
- Construction Period: July 2022 - Sep 2024



22

# CAPITAL PROJECT UPDATE

## Project Name:

### DES 2023-25 Minor Works Projects

- LEG - Exterior Safety Railings
- TOJ - Exterior Safety Railings
- Campus Signage and Wayfinding
- HLB – HVAC Recommissioning
- Archives – Investigate & Repair Sewer Lines
- Capitol Way Pedestrian Bridge Repair
- Cherberg-O'Brien – Replace UST Monitor
- HLB-Plaza Garage – Replace Failed Tunnel Skylight
- LEG - Basement Water Infiltration
- Dolliver - Replace Loading Dock Roof
- Dolliver - Roof Fall Protection Upgrades
- Powerhouse - Replace Sewer Main

## Key Milestones:

- Design Period: Sep 2023 - Sep 2024
- Bid Date: Jan 2024 - Sep 2024
- Construction Period: Jan 2024 – Jun 2025



23

# QUESTIONS OR COMMENTS?

# THANK YOU!



[oliver.wu@des.wa.gov](mailto:oliver.wu@des.wa.gov)



xxxx



[www.des.wa.gov](http://www.des.wa.gov)

24



## Capitol Campus Advisory Committee

August 15, 2024

### **6B- 2025-2027 Capital Budget Request – Overview**

Purpose: **Informational**

Sponsor(s): Bill Frare, FPS Assistant Director, and  
John Lyons, FPS Planning and Project Delivery, APM

Presenters: John Lyons, [john.lyons@des.wa.gov](mailto:john.lyons@des.wa.gov)

#### **Description:**

##### **2025-2027 Capital Budget Request – Overview**

The 2025-2027 Capital Budget Request presentation aims to provide committee members with an overview of the proposed budget for the next biennium, including a review of the agency's strategic framework and a reflection on historical funding trends. The presentation includes:

- A brief historic funding overview intended to orient the committee to the magnitude of past requests.
- A discussion on the guiding principles of the capital planning framework.
- A discussion of how the guiding principles were used to construct our 2025 - 2027 capital budget request.

#### **Historical Context**

The presentation begins with a review of funding from previous biennia, illustrating the magnitude of appropriations and requests over time.

#### **Capital Planning Framework**

The guiding principles of "Finish what we start," "Worst First," and "Change the Existing Plan as Little as Necessary" frame the capital planning efforts. The "Worst First" principle, driven by the Facility Condition Assessment, prioritizes projects that address the most severe risks and deficiencies first, ensuring that the most urgent needs are met promptly and efficiently.

#### **2025-2027 Capital Budget Request and Priority Projects**

The core of the presentation focuses on the specific requests for the 2025-2027 biennium, highlighting how the capital planning framework motivated the selected projects.

**Next Steps:**


Enterprise Services will provide project updates to CCDAC and SCC at future regularly scheduled meetings.

**Requested Action:**

This is an informational item. No action by CCDAC is necessary.

**List of Attachments:**

Attachment: 6BB- 2025-2027 Capital Budget Request – Overview Presentation



**DES**  
Washington State  
DEPARTMENT OF  
ENTERPRISE SERVICES

## **2025-2027 Capital Budget Request – Overview**

**Planning & Project Delivery**  
FACILITY PROFESSIONAL SERVICES  
August 15, 2024

1

## PURPOSE

**For today**

- Historical Funding Overview
- Introduce Capital Planning Framework
- Review 2025-27 Capital Budget Request

2

## 2005 – 2023 SUMMARY

| Biennium | Request       | Appropriation |
|----------|---------------|---------------|
| 05-07    | \$64,873,000  | \$52,885,000  |
| 07-09    | \$300,036,000 | \$56,772,000  |
| 09-11    | \$92,391,000  | \$37,308,000  |
| 11-13    | \$42,767,000  | \$11,091,000  |
| 13-15    | \$78,311,000  | \$40,636,000  |
| 15-17    | \$63,622,000  | \$97,257,000  |
| 17-19    | \$195,491,000 | \$37,388,000  |
| 19-21    | \$65,866,000  | \$23,010,000  |
| 21-23    | \$175,611,000 | \$123,975,000 |
| 23-25    | \$357,016,675 | \$160,025,000 |

### Mean

Request \$144M      Appropriation \$64M

### Min

Request \$43M      Appropriation \$11M

### Max

Request \$357M      Appropriation \$160M

3

## GUIDING FRAMEWORK

**Finish what we start**

**Worst First**

**Change the Existing Plan as Little as Necessary**

4

## FINISH WHAT WE START

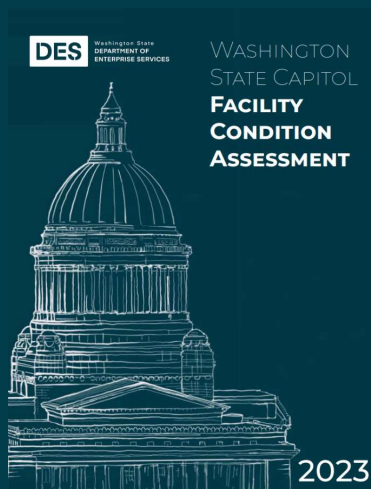
**10** Projects

**\$233** Million

**Commit to Completion:** Follow-through is important, discourage incomplete projects due to budget constraints or changing priorities.

5

## WORST FIRST



**Prioritized Investment:** Evaluate building performance based on metrics like condition assessment, energy performance, seismic risk, and regulatory requirements.

6

# CAMPUS CONDITION ASSESSMENT

## CAMPUS MAP



## SATELLITE BUILDINGS



7

# WEST CAMPUS CONDITION ASSESSMENT



### CONDITION SUMMARY

The West Campus showcases buildings across the spectrum of condition ratings, from poor to excellent. The Powerhouse stands out with a high FCI of 35%, indicating poor condition and significant need for repairs or potential replacement. In contrast, buildings like Helen Sommers, which have a very low FCI of 1%, are in excellent condition.

Many buildings, such as the Temple of Justice and Legislative Building, are historically significant and have FCIs that indicate good conditions, suggesting successful ongoing maintenance and preservation efforts.

### WEST CAMPUS

NUMBER OF BUILDINGS: 8  
 SQUARE FOOTAGE: 873,276  
 OLDEST BUILDING: 1907  
 NEWEST BUILDING: 2017

| ID | Facility Name     | Year Built | GSF     | FCI |
|----|-------------------|------------|---------|-----|
| 7  | Powerhouse        | 1920       | 10,000  | 35% |
| 6  | Manson            | 1927       | 21,400  | 6%  |
| 1  | Legislative       | 1928       | 255,564 | 4%  |
| 4  | Insurance         | 1921       | 65,502  | 4%  |
| 5  | Cherberg          | 1937       | 100,377 | 3%  |
| 2  | Temple of Justice | 1919       | 85,900  | 3%  |
| 3  | O'Brien           | 1940       | 100,700 | 2%  |
| 8  | Helen Sommers     | 2017       | 233,833 | 1%  |



8



# EAST CAMPUS CONDITION ASSESSMENT



### CONDITION SUMMARY

Buildings on the East Campus mostly exhibit good to fair conditions. The Plaza Garage, however, has a higher FCI of 19%, suggesting it is nearing poor condition and may require more extensive repairs. The Transportation Building, with an FCI of 28%, is in poor condition, highlighting a critical need for interventions.

| ID | Facility Name      | Year Built | GSF     | FCI |
|----|--------------------|------------|---------|-----|
| 3  | Archives           | 1964       | 51,317  | 4%  |
| 8  | Capitol Child Care | 2021       | 9,593   | 6%  |
| 1  | Capitol Court      | 1930       | 45,142  | 6%  |
| 4  | Highway License    | 1962       | 193,900 | 6%  |
| 2  | Natural Resources  | 1992       | 387,558 | 6%  |
| 5  | Office Building 2  | 1975       | 379,204 | 16% |
| 6  | Plaza Garage       | 1973       | 846,100 | 19% |
| 7  | Transportation     | 1971       | 204,053 | 28% |

**EAST CAMPUS**

NUMBER OF BUILDINGS: 8  
 SQUARE FOOTAGE: 2,604,267  
 OLDEST BUILDING: 1930  
 NEWEST BUILDING: 2021

**DES** WASHINGTON STATE DEPARTMENT OF ENTERPRISE SERVICES

9

# SATELLITE CONDITION ASSESSMENT



### CONDITION SUMMARY

Many satellite buildings have critical or poor FCI conditions. The 721 Columbia building has the worst FCI of any building assessed. Other buildings, Washington Building, Columbia Garage, and Union have also been assessed as critical condition, highlighting a need for intervention. Dolliver stands out with a fair FCI of 6%.

| ID | Facility Name             | Year Built | GSF     | FCI |
|----|---------------------------|------------|---------|-----|
| 2  | 721 Columbia              | 1967       | 3,169   | 74% |
| 5  | Washington Building       | 1953       | 14,580  | 63% |
| 4  | Columbia Garage           | 1971       | 71,000  | 63% |
| 5  | Union                     | 1956       | 12,900  | 58% |
|    | Kelso                     | 1981       | 60,585  | 17% |
| 1  | Old Capitol               | 1892       | 120,500 | 17% |
|    | Yakima                    | 1986       | 99,000  | 13% |
|    | Perry St Child Care       | 1950       | 7,138   | 14% |
|    | Isabella Bush             | 1992       | 47,200  | 14% |
|    | Alaska Street             | 1957       | 23,293  | 13% |
| 3  | Dolliver                  | 1914       | 23,385  | 6%  |
|    | Heritage Park - Restrooms | 1964       | 3,969   | 22% |

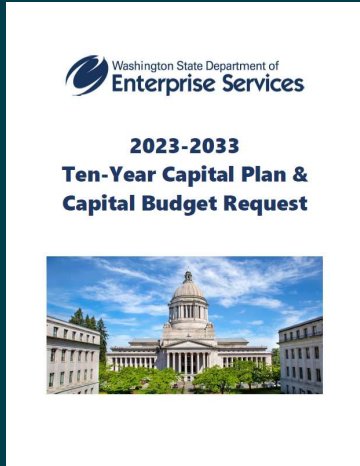
**SATELLITE**

NUMBER OF BUILDINGS: 12  
 SQUARE FOOTAGE: 1,238,919  
 OLDEST BUILDING: 1914  
 NEWEST BUILDING: 1992

**DES** WASHINGTON STATE DEPARTMENT OF ENTERPRISE SERVICES

10

# CHANGE THE EXISTING PLAN AS LITTLE AS NECESSARY



**Focus on Stability & Data-Driven Adjustments:**  
 Modifying the existing capital plan only when substantiated by data.

11

## 2025 -27 REQUEST

| Priority      | Project  | Forecast       |
|---------------|--|----------------|
| 1             | Facility Professional Services Staffing                                  | \$28,000,000   |
| 2             | Reappropriations   | TBD            |
| 3             | Minor Works  | \$31,000,000   |
| 4             | Deschutes Estuary Restoration  | \$20,000,000   |
| 5             | Legislative Campus Modernization   | \$50,000,000   |
| 6             | Capitol Campus Security  | \$44,110,000   |
| 7             | Legislative Building Systems Rehabilitation                              | \$16,307,000   |
| 8             | NRB - Replace Piping for Wet Fire Suppression                            | \$10,126,000   |
| 9             | Modular Building - Critical Repairs & Upgrades                           | \$43,500,000   |
| 10            | GA - Building Demolition   | \$15,000,000   |
| 11            | Critical Campus Heat System Replacement                                  | \$9,500,000    |
| 12            | Transportation - Preservation  | \$17,000,000   |
| 13            | West Campus - Hillside Stabilization - Comprehensive Design & Evaluation | \$500,000      |
| 14            | Leg - Legislative Building Cleaning                                      | \$1,665,000    |
| 15            | Leg - Restore Chamber Skylights  | \$7,781,000    |
| 16            | Leg - Chamber Restoration  | \$3,109,000    |
| 17            | Leg - South Parking Lot Utilities & Drainage Improvements                | \$4,252,000    |
| 18            | O'Brien - Repair HVAC System   | \$2,492,000    |
| 19            | East Plaza - Water Infiltration & Elevator Repairs                       | \$580,000      |
| 20            | Cherberg-O'Brien - Repair Tunnel   | \$3,003,000    |
| 21            | Campus - Arc Flash Electrical Code Compliance                            | \$1,200,000    |
| 22            | Campus - Critical Infrastructure Assessment                              | \$930,000      |
| 23            | North Gateway - Comprehensive Plan                                       | \$640,000      |
| 24            | Campus - EV Study  | \$560,000      |
| 25            | NRB - Emergency Generator Replacement                                    | \$1,161,000    |
| <b>Total:</b> |  | <b>\$305 M</b> |

12

## FINISH WHAT WE START

| Priority      | Project  | Forecast            |
|---------------|--|---------------------|
| 1             | Facility Professional Services Staffing                                  | \$28,000,000        |
| <b>2</b>      | <b>Reappropriations</b>  | <b>TBD</b>          |
| 3             | Minor Works  | \$31,000,000        |
| <b>4</b>      | <b>Deschutes Estuary Restoration</b>                                     | <b>\$20,000,000</b> |
| <b>5</b>      | <b>Legislative Campus Modernization</b>                                  | <b>\$50,000,000</b> |
| <b>6</b>      | <b>Capitol Campus Security</b>   | <b>\$44,110,000</b> |
| <b>7</b>      | <b>Legislative Building Systems Rehabilitation</b>                       | <b>\$16,307,000</b> |
| <b>8</b>      | <b>NRB - Replace Piping for Wet Fire Suppression</b>                     | <b>\$10,126,000</b> |
| <b>9</b>      | <b>Modular Building - Critical Repairs &amp; Upgrades</b>                | <b>\$43,500,000</b> |
| <b>10</b>     | <b>GA - Building Demolition</b>  | <b>\$15,000,000</b> |
| <b>11</b>     | <b>Critical Campus Heat System Replacement</b>                           | <b>\$9,500,000</b>  |
| <b>12</b>     | <b>Transportation - Preservation</b>                                     | <b>\$17,000,000</b> |
| 13            | West Campus - Hillside Stabilization - Comprehensive Design & Evaluation | \$500,000           |
| 14            | Leg - Legislative Building Cleaning                                      | \$1,665,000         |
| <b>15</b>     | <b>Leg - Restore Chamber Skylights</b>                                   | <b>\$7,781,000</b>  |
| 16            | Leg - Chamber Restoration  | \$3,109,000         |
| 17            | Leg - South Parking Lot Utilities & Drainage Improvements                | \$4,252,000         |
| 18            | O'Brien - Repair HVAC System   | \$2,492,000         |
| 19            | East Plaza - Water Infiltration & Elevator Repairs                       | \$580,000           |
| 20            | Cherberg-O'Brien - Repair Tunnel   | \$3,003,000         |
| 21            | Campus - Arc Flash Electrical Code Compliance                            | \$1,200,000         |
| 22            | Campus - Critical Infrastructure Assessment                              | \$930,000           |
| 23            | North Gateway - Comprehensive Plan                                       | \$640,000           |
| 24            | Campus - EV Study  | \$560,000           |
| 25            | NRB - Emergency Generator Replacement                                    | \$1,161,000         |
| <b>Total:</b> |  | <b>\$305 M</b>      |

13

## WORST FIRST

| Priority      | Project  | Forecast            |
|---------------|--|---------------------|
| 1             | Facility Professional Services Staffing                                  | \$28,000,000        |
| 2             | Reappropriations   | TBD                 |
| <b>3</b>      | <b>Minor Works</b>   | <b>\$31,000,000</b> |
| 4             | Deschutes Estuary Restoration  | \$20,000,000        |
| 5             | Legislative Campus Modernization   | \$50,000,000        |
| 6             | Capitol Campus Security ( <i>See Program Arrays</i> )                    | \$44,110,000        |
| 7             | Legislative Building Systems Rehabilitation                              | \$16,307,000        |
| 8             | NRB - Replace Piping for Wet Fire Suppression                            | \$10,126,000        |
| 9             | Modular Building - Critical Repairs & Upgrades                           | \$43,500,000        |
| 10            | GA - Building Demolition   | \$15,000,000        |
| 11            | Critical Campus Heat System Replacement                                  | \$9,500,000         |
| 12            | Transportation - Preservation  | \$17,000,000        |
| 13            | West Campus - Hillside Stabilization - Comprehensive Design & Evaluation | \$500,000           |
| 14            | Leg - Legislative Building Cleaning                                      | \$1,665,000         |
| 15            | Leg - Restore Chamber Skylights  | \$7,781,000         |
| 16            | Leg - Chamber Restoration  | \$3,109,000         |
| 17            | Leg - South Parking Lot Utilities & Drainage Improvements                | \$4,252,000         |
| 18            | O'Brien - Repair HVAC System   | \$2,492,000         |
| 19            | East Plaza - Water Infiltration & Elevator Repairs                       | \$580,000           |
| 20            | Cherberg-O'Brien - Repair Tunnel   | \$3,003,000         |
| 21            | Campus - Arc Flash Electrical Code Compliance                            | \$1,200,000         |
| 22            | Campus - Critical Infrastructure Assessment                              | \$930,000           |
| 23            | North Gateway - Comprehensive Plan                                       | \$640,000           |
| 24            | Campus - EV Study  | \$560,000           |
| 25            | NRB - Emergency Generator Replacement                                    | \$1,161,000         |
| <b>Total:</b> |  | <b>\$305 M</b>      |

14

## CHANGE THE EXISTING PLAN AS LITTLE AS NECESSARY

| Priority      | Project  | Forecast       |
|---------------|--|----------------|
| 1             | Facility Professional Services Staffing                                  | \$28,000,000   |
| 2             | Reappropriations   | TBD            |
| 3             | Minor Works  | \$31,000,000   |
| 4             | Deschutes Estuary Restoration  | \$20,000,000   |
| 5             | Legislative Campus Modernization   | \$50,000,000   |
| 6             | Capitol Campus Security ( <i>See Program Arrays</i> )                    | \$44,110,000   |
| 7             | Legislative Building Systems Rehabilitation                              | \$16,307,000   |
| 8             | NRB - Replace Piping for Wet Fire Suppression                            | \$10,126,000   |
| 9             | Modular Building - Critical Repairs & Upgrades                           | \$43,500,000   |
| 10            | GA - Building Demolition   | \$15,000,000   |
| 11            | Critical Campus Heat System Replacement                                  | \$9,500,000    |
| 12            | Transportation - Preservation  | \$17,000,000   |
| 13            | West Campus - Hillside Stabilization - Comprehensive Design & Evaluation | \$500,000      |
| 14            | Leg - Legislative Building Cleaning                                      | \$1,665,000    |
| 15            | Leg - Restore Chamber Skylights  | \$7,781,000    |
| 16            | Leg - Chamber Restoration  | \$3,109,000    |
| 17            | Leg - South Parking Lot Utilities & Drainage Improvements                | \$4,252,000    |
| 18            | O'Brien - Repair HVAC System   | \$2,492,000    |
| 19            | East Plaza - Water Infiltration & Elevator Repairs                       | \$580,000      |
| 20            | Cherberg-O'Brien - Repair Tunnel   | \$3,003,000    |
| 21            | Campus - Arc Flash Electrical Code Compliance                            | \$1,200,000    |
| 22            | Campus - Critical Infrastructure Assessment                              | \$930,000      |
| 23            | North Gateway - Comprehensive Plan                                       | \$640,000      |
| 24            | Campus - EV Study  | \$560,000      |
| 25            | NRB - Emergency Generator Replacement                                    | \$1,161,000    |
| <b>Total:</b> |  | <b>\$305 M</b> |

15

## QUESTIONS?

16

# THANK YOU



[DESPlanning@des.wa.gov](mailto:DESPlanning@des.wa.gov)



360-810-0676



[www.des.wa.gov](http://www.des.wa.gov)



## Capitol Campus Advisory Committee

August 15, 2024

### **6C- Legislative Campus Modernization Project - Update**

Purpose: **Informational**

Sponsor(s): Bill Frare, DES FPS Assistant Director  
Presenters: Wesley Kirkman, LCM Project Director  
Brian Pickering, Project Manager  
Sidney Hunt, Project Manager  
Katy Stark, Project Manager

#### **Description:**

Since the last CCDAC meeting, the following has been accomplished on the Legislative Campus Modernization project:

- Newhouse
  - Precast siding, roofing, windows and interior framing complete.
  - Electrical, mechanical, and plumbing, elevator and sheetrock installation underway.
  - Capitol Way sidewalk, 15<sup>th</sup> Street paving and sidewalk improvements, and Site 6 stormwater system complete.
- Pritchard
  - Occupants moved out and site turned over to BNB.
  - Tobey art piece removed and relocated to Helen Sommers for temporary display during construction; Calahan Mural removed and is being restored off-site by Art Conservator.
  - Fitzgerald Mosaic and Dupen Fountain protected in place during renovation.
  - Demolition complete including abatement, steel bracing and stone salvage.
  - Hillside prep underway including tree removal and excavation.

#### **Next Steps:**

- Newhouse
  - Install solar array and rooftop equipment
  - Interior painting, flooring and other finishes
  - Pave Columbia Street and sidewalk
  - Install furniture and other equipment
  - Landscape
- Pritchard
  - Hillside stabilization: install 255 auger drilled cast concrete piles.
  - Install expansion foundation Fall of 2024.
  - O'Brien construction starts in Spring of 2026.

#### **Requested Action:**

This is an informational item. No action by CCDAC is requested.

**List of Attachments:**

Attachment: 6CC- Legislative Campus Modernization Project Update – August 15, 2024

# LEGISLATIVE CAMPUS MODERNIZATION UPDATE


CCDAC

August 15, 2024



(updates as of 7/15/24)

1



**WASHINGTON STATE CAPITOL**

**2021 - 2024**

**Irv Newhouse**

December 2021 - December 2022  
Newhouse design  
January - April 2023  
Deconstruction of Newhouse & Press Houses  
May 2023  
Demolition of Newhouse & Press Houses  
June 2023 - November 2024  
New building construction  
**NOVEMBER 2024**  
Estimated substantial completion

**2021 - 2026**

**Joel M. Pritchard**

April 2021 - April 2022  
Preservation & validation study  
April - July 2023  
New design  
March 2024 - July 2026  
Construction  
**AUGUST 2026**  
Estimated substantial completion

mid-2026 - late 2026

**John L. O'Brien**

2026  
Design  
2026  
Construction  
Timeline subject to change

## Legislative Campus Modernization

The Legislature directed Department of Enterprise Services (DES) to manage work for Legislative Campus Modernization (LCM) over the next several years on a portion of the Historic West Capitol Campus. A series of projects will address serious life-safety issues with the buildings, overcrowding, and access for legislative agencies and the public while upgrading existing building systems and making Newhouse and Pritchard high performance, net zero ready facilities in keeping with State of Washington Executive Order 18 01.

**Irv Newhouse**


Built in 1934, the building is beyond its life, and the interior is very crowded during legislative sessions.

**Joel M. Pritchard**

Built in 1958 and on the National Registry of Historic Places, the building has significant health and life safety hazards and currently cannot support efficient legislative functions.

**John L. O'Brien**

Planned renovation on top two floors will relieve interior crowding.



**O'Brien Renovation**

3<sup>rd</sup>/4<sup>th</sup> Floors  
Spring '26-Fall '26

**Newhouse Building Replacement**

4 Story, 59k SF  
Complete in Nov '24

**Pritchard Expansion & Renovation**

1 Story, 18k SF Renovation  
3 Story, 58k SF Expansion  
Spring '24-Fall '26

(updates as of 7/15/24)

2

1



# NEWHOUSE REPLACEMENT PROJECT



3

## NEWHOUSE CONSTRUCTION UPDATES

- Precast siding, roofing, windows, and interior framing complete.
- Electrical, mechanical, and plumbing, elevator and sheetrock installation underway.
- Capitol Way sidewalk, 15th Street paving and sidewalk improvements, and Site 6 stormwater system complete.
- Next:
  - Install solar array and rooftop equipment
  - Interior painting, flooring and other finishes
  - Pave Columbia Street and sidewalk
  - Install furniture and other equipment
  - Landscape

*(updates as of 7/15/24)*

4

## NEWHOUSE CONSTRUCTION PHOTOS



*(updates as of 7/15/24)*

5

## PRITCHARD AND O'BRIEN RENOVATION AND EXPANSION PROJECTS



6

## PRITCHARD AND O'BRIEN UPDATES

- Pritchard occupants moved out and site turned over to BNB.
- Tobey Art painting removed and temporarily displayed in Helen Sommers; Calahan Mural removed and is being restored off-site by Art Conservator.
- Fitzgerald Mosaic and Dupen Fountain protected in place during renovation.
- Demolition complete including abatement, steel bracing, and stone salvage.
- Hillside prep underway including tree removal and excavation.
- Next Steps:
  - Hillside stabilization: install 255 auger drilled cast concrete piles.
  - Install expansion foundations fall 2024.
  - O'Brien construction starts in spring 2026.

*(updates as of 7/15/24)*

7

## PRITCHARD PHOTOS



*(updates as of 7/15/24)*

8

**QUESTIONS OR COMMENTS?**

**THANK YOU!**



DesLCM@des.wa.gov

*(updates as of 7/15/24)*



Subscribe for updates  
<https://bit.ly/43Htc2Q>



[www.des.wa.gov](http://www.des.wa.gov)



## Capitol Campus Design Advisory Committee

August 15, 2024

### **6D- General Administration Building Demolition**

Purpose: Informational

Sponsor(s): Department of Enterprise Services (DES)

Presenters:

- Oliver Wu, Program Manager with the Department of Enterprise Services (DES), (951) 961-0420, [Oliver.Wu@DES.WA.gov](mailto:Oliver.Wu@DES.WA.gov)
- Kevin Moore, Project Manager with Walker Consultants, (206) 455-8298, [KMoore@WalkerConsultants.com](mailto:KMoore@WalkerConsultants.com)

#### **Description:**

The General Administration (GA) Building, located at the corner of Columbia St. and Union Ave. on the Capitol Campus in Olympia, WA, is slated for demolition. This project is part of an effort to optimize state property and ensure safety and efficiency within the Capitol Campus. The GA Building was completed in 1956. In 2008 the Washington State Department of Archaeology and Historic Preservation (DAHP) designated the GA Building as a historical structure in an effort to recognize and preserve the state's architectural and historical heritage. However, the building has sat vacant since 2018 due to numerous deficiencies including inadequate seismic resistance, a prevalence of hazardous materials that requires abatement, and non-compliance with current fire codes, electrical codes, and mechanical/plumbing codes. Therefore, the building is planned for demolition while ensuring its prominent historical features and artifacts are preserved in accordance with DAHP.

The Department of Enterprise Services (DES) is overseeing this project, which includes comprehensive planning and execution for the building's demolition. The final design is scheduled to be completed by September 13, 2024. The scope of work covers hazardous material abatement, thorough environmental and historical mitigation measures, retaining wall repairs, and post-demolition site redevelopment for increased parking, green spaces, a public restroom, and a new state seal exhibit using historical artifacts from the GA Building.

The alternatives considered for this project included complete demolition with redevelopment, partial preservation with adaptive reuse, and the no-action alternative. The preferred option is full demolition with a temporary surface lot and restroom facility, which provides the greatest benefit in terms of safety, future site utility, and alignment with the Capitol Campus Master Plan. Mitigation strategies include documentation of the building's historical significance, material salvage, preservation of landscape integration post-demolition, and reallocating recently lost campus parking and restroom facilities via a new surface lot.

**Next Steps:**

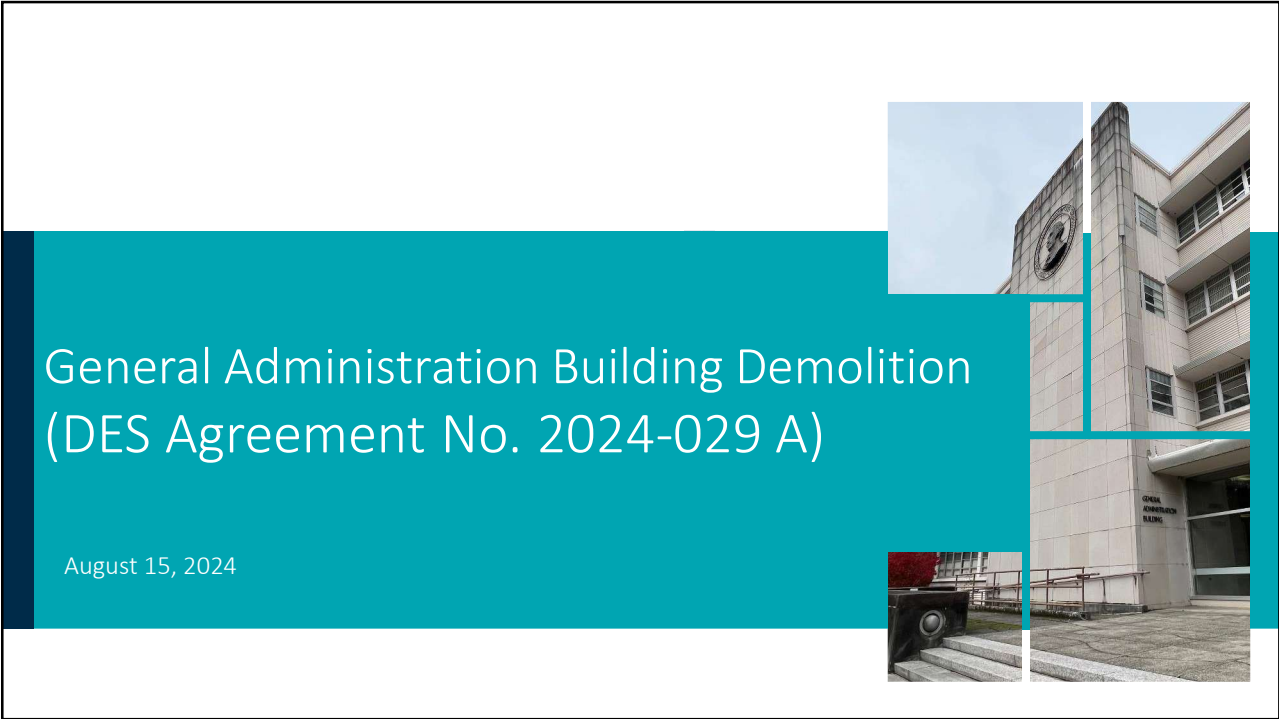
- Finalize historical preservation plan with DES and DAHP.
- Continue to conduct stakeholder outreach, meetings, and workshops.
- **September 13, 2024:** Final design submission based on comments received.
- Prepare and submit the SEPA environmental review documents.
- Planned dates for future presentations:
  - SCC – September 19, 2024
  - CCDAC – November 14, 2024

**Requested Action:**

This is an informational item. No action by CCDAC is necessary.

**List of Attachments:**

Attachment: 6DD- General Administration Building Demolition Project Presentation

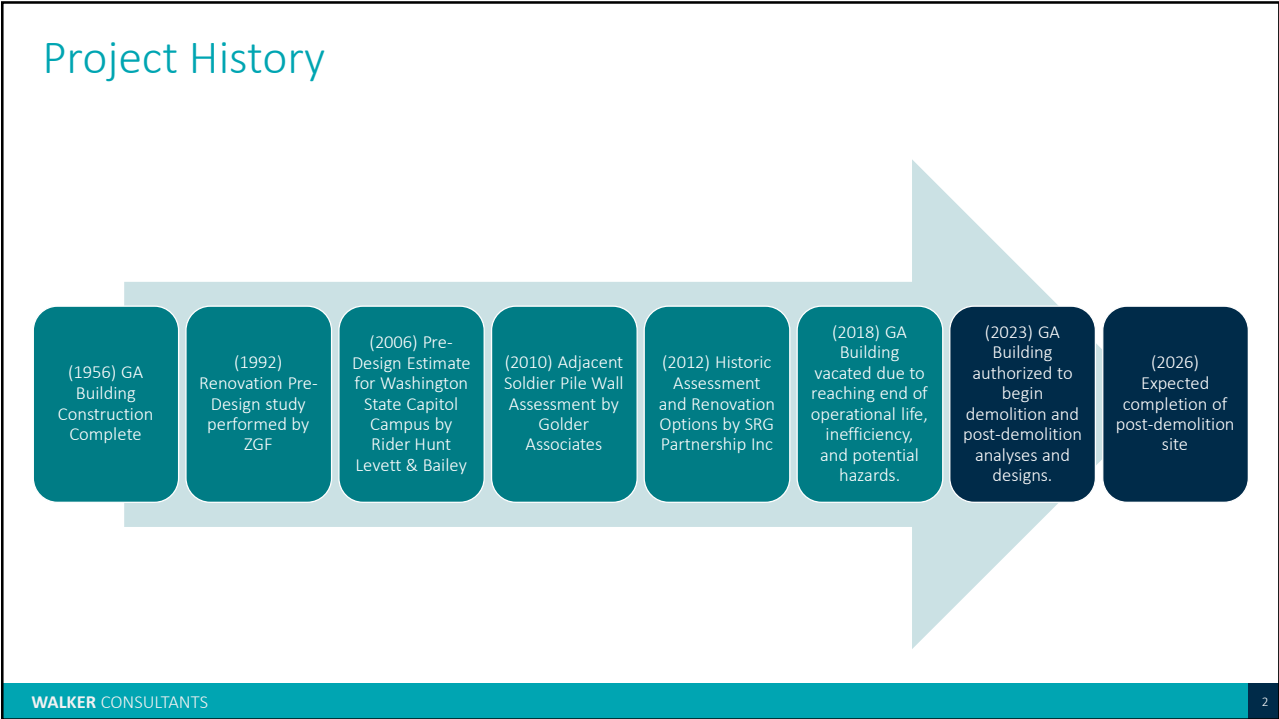


# General Administration Building Demolition (DES Agreement No. 2024-029 A)

August 15, 2024

1

## Project History



- (1956) GA Building Construction Complete
- (1992) Renovation Pre-Design study performed by ZGF
- (2006) Pre-Design Estimate for Washington State Capitol Campus by Rider Hunt Levett & Bailey
- (2010) Adjacent Soldier Pile Wall Assessment by Golder Associates
- (2012) Historic Assessment and Renovation Options by SRG Partnership Inc
- (2018) GA Building vacated due to reaching end of operational life, inefficiency, and potential hazards.
- (2023) GA Building authorized to begin demolition and post-demolition analyses and designs.
- (2026) Expected completion of post-demolition site

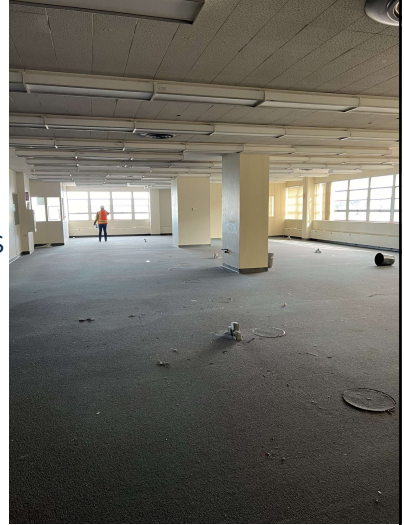
WALKER CONSULTANTS

2



## Environmental Compliance Elements at 60% Design

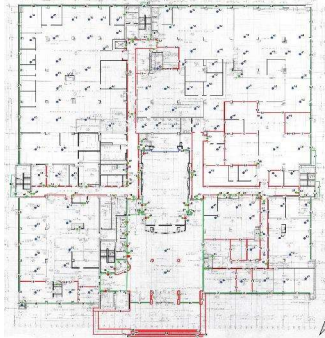
- SEPA Checklist and Supporting Documentation with DES for review
- Current Abatement Estimate = \$1.25MM (assume 4 months)
- >90% of GA Bldg. is recyclable, reusable or salvageable. Plans and specifications direct materials away from landfills, as feasible.
- Embodied carbon estimates will focus on End of Life and Beyond the Life Cycle GHG reductions. Less than 2% of Bldg life cycle contributions.
- Site constraints limit stockpiling and on-site containment. Over 750 container hauls during demolition. Between 10 and 20 per day.



## Artifact Inventory | Parts

### Purpose:

- Identification
- Quantities
- Treatment
  - Store for Reuse
  - Surplus
  - Recycle



L1  
Artifact point locations and treatment, level 1

- DES Storage
- DES Surplus
- Recycle

Artifact line locations and treatment, level 1

- DES Storage
- DES Surplus
- Recycle
- 2007 CAD walls, level 1

L1\_AR38-2-0-2\_GA\_1953-A-08 original drawing base image

- Band 1 (Gray)
- 255
- 0



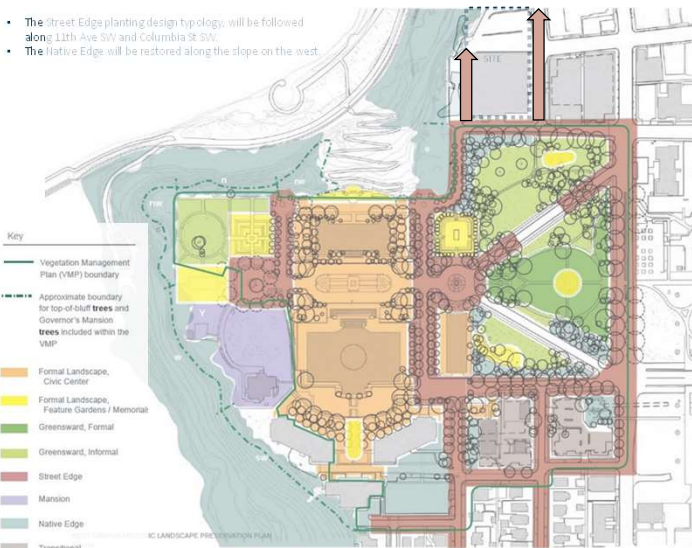
| DES Storage Items, Storage Location, and Hand Off Contact |   |             |                  |   |
|---|---|-------------|------------------|---|
| ID  | Name  | Treatment   | Storage Location | Point Person to Sign Off on Receipt of Item |
| 1   | Baseboard, aluminum   | DES Storage |                  |   |
| 4   | Clock   | DES Storage |                  |   |
| 5   | Column, corrugated  | DES Storage |                  |   |
| 7   | Elevator, system  | DES Storage |                  |   |
| 14  | Houseman, door panel, inclusive cornice (L1 only), ceiling trim, base, plinths, post caps and keys, and metal track       | DES Storage |                  |   |
| 18  | Houseman, wall panel, inclusive cornice (L1 only), ceiling trim, base, plinths, post caps and keys, and metal track       | DES Storage |                  |   |
| 19  | Houseman, single panel (11' 0" height), inclusive frame, ceiling trim, base, plinths, post caps and keys, and metal track | DES Storage |                  |   |
| 26  | Panel, Wilsonart stonestone   | DES Storage |                  |   |
| 35  | Staircase, corrugated   | DES Storage |                  |   |
| 50  | Door, B4  | DES Storage |                  |   |
| 52  | Door, B6  | DES Storage |                  |   |
| 54  | Directory   | DES Storage |                  |   |
| 54  | Steps, granite  | DES Storage |                  |   |

| DES Surplus Items, Storage Location, Receiving Entity, and Hand Off Contact |  |             |                  |                  |   |
|---|--|-------------|------------------|------------------|---|
| ID  | Name   | Treatment   | Storage Location | Receiving Entity | Point Person to Sign Off on Receipt of Item |
| 2   | Cabinets, Information Center                         | DES Surplus |                  |                  |   |
| 6   | Door, F3   | DES Surplus |                  |                  |   |
| 10  | Fountain, drinking                                   | DES Surplus |                  |                  |   |
| 11  | Ceramic tile veneer                                  | DES Surplus |                  |                  |   |
| 12  | Handicaps, lockset                                   | DES Surplus |                  |                  |   |
| 13  | Handicaps, hinges                                    | DES Surplus |                  |                  |   |
| 22  | Lighting diffuser, corrugated                        | Recycle     | Not applicable   | Not applicable   | Not applicable                              |
| 24  | Mail chute   | DES Surplus |                  |                  |   |
| 25  | Mail chute, letter box                               | DES Surplus |                  |                  |   |
| 28  | Proscenium, birch veneer                             | Recycle     | Not applicable   | Not applicable   | Not applicable                              |
| 31  | Rubbish chute  | Recycle     | Not applicable   | Not applicable   | Not applicable                              |
| 36  | Floor, terrazzo                                      | Recycle     | Not applicable   | Not applicable   | Not applicable                              |
| 38  | Door, steel  | Recycle     | Not applicable   | Not applicable   | Not applicable                              |
| 45  | Door, metal  | Recycle     | Not applicable   | Not applicable   | Not applicable                              |
| 46  | Handicaps, lockset and hinges                        | DES Surplus |                  |                  |   |
| 46  | Bumper, wall, round                                  | DES Surplus |                  |                  |   |
| 47  | Cupset, hot, copper                                  | Recycle     | Not applicable   | Not applicable   | Not applicable                              |
| 48  | Signage, end wall                                    | DES Surplus |                  |                  |   |
| 49  | Cabinet, fire extinguisher                           | DES Surplus |                  |                  |   |
| 53  | Fascia, aluminum, inclusive picture molding above    | DES Surplus |                  |                  |   |
| 60  | Windows, aluminum                                    | DES Surplus |                  |                  |   |
| 61  | Frame, aluminum                                      | DES Surplus |                  |                  |   |
| 62  | Elevator, surround and hallway door trim panels      | DES Surplus |                  |                  |   |
| 42  | Diffuser, ceiling, inclusive 18", 30", and 36" sizes | Recycle     | Not applicable   | Not applicable   | Not applicable                              |



# Olmsted Plan Landscape Typology

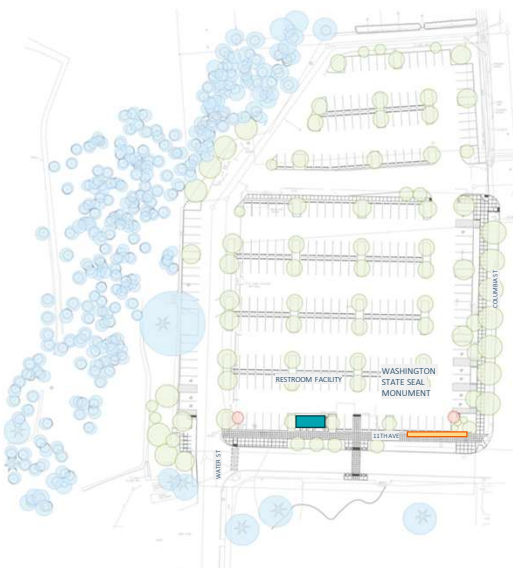
- The Street Edge planting design typology, will be followed along 11th Ave SW and Columbia St SW.
- The Native Edge will be restored along the slope on the west.



Reference: West Campus Historic Landscape Preservation Plan

5

# Existing and Proposed Trees



- LEGEND
- Existing trees to remain
  - 88 New trees proposed
  - 2 Trees to be removed



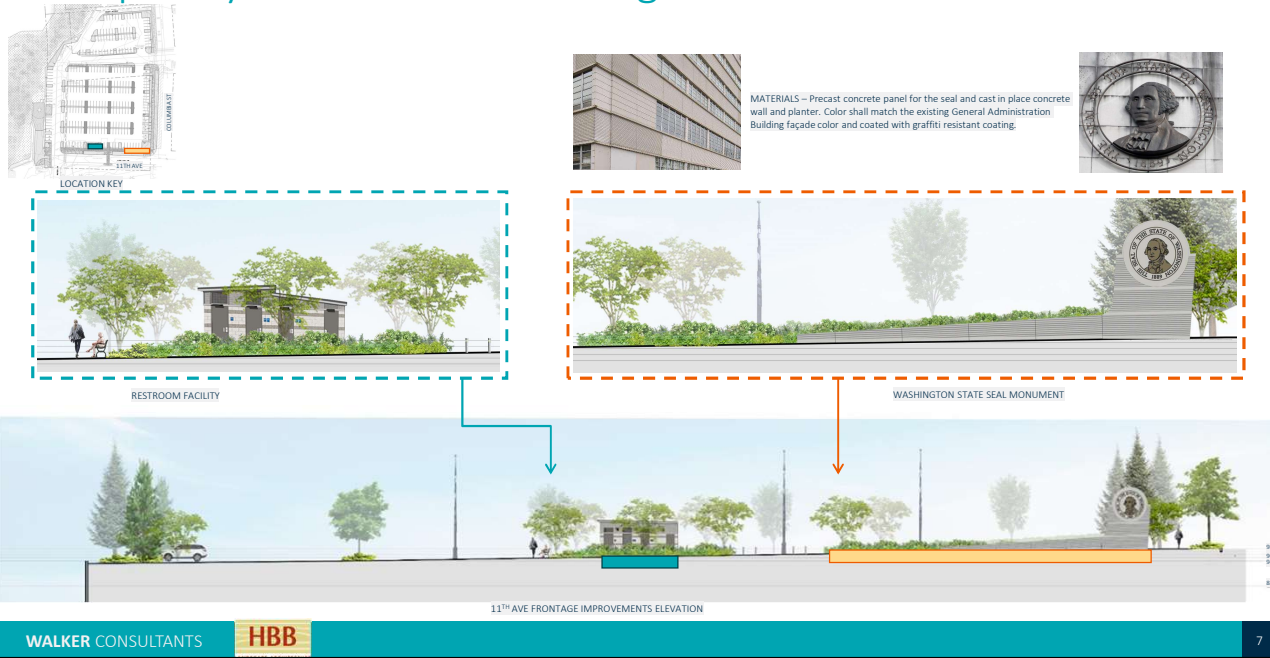
| DECIDUOUS TREES   |  |   | CONIFER TREES   |
|---|--|---|---|
| <br><b>QUERCUS ROBUR</b><br><i>English oak</i>              | <br><b>WIRELESS ZELKOVA</b><br><i>Zelkova serrata 'Schmidlow'</i>   | <br><b>SAUCER MAGNOLIA</b><br><i>Cornus s. 'Kelsey'</i>          | <br><b>DOUGLAS FIR</b><br><i>Pseudotsuga menziesii</i>     |
| <br><b>KATSURA</b><br><i>Cercidiphyllum japonicum</i>       | <br><b>GINKGO AUTUMN GOLD</b><br><i>Ginkgo biloba 'Autumn Gold'</i> | <br><b>TULIP TREE</b><br><i>Liriodendron tulipifera</i>          | <br><b>EXCELSA CEDAR</b><br><i>Thuja plicata 'Excelsa'</i> |
| <br><b>AMERICAN HORNBEAM</b><br><i>Carpinus caroliniana</i> | <br><b>VINE MAPLE</b><br><i>Acer circinatum</i>                     | <br><b>WHITE DOGWOOD</b><br><i>Cornus 'Eddie's White Wonder'</i> | <br><b>WESTERN RED CEDAR</b><br><i>Thuja plicata</i>       |

 Indicates Olmsted legacy species  
 Indicates pollinator species (per RCW 39.04.410, a minimum of 25% of the proposed plants are species beneficial to pollinators)

New trees proposed

6

# Temporary Restroom & Washington State Seal Monument

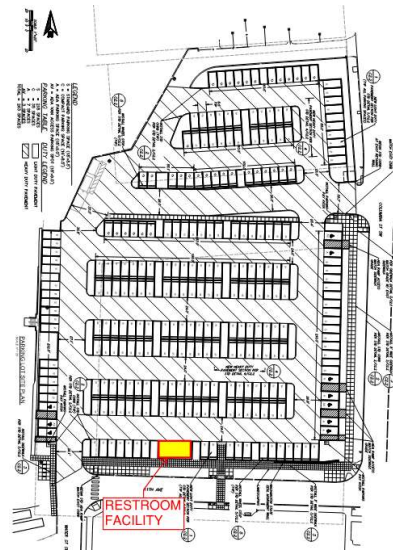


7

# Questions?



PRE-DEMOLITION



POST-DEMOLITION

8



Washington State  
**DEPARTMENT OF  
ENTERPRISE SERVICES**

## **Capitol Campus Design Advisory Committee**

*Marc Daily (2024 Chair, Urban Planner), Kristin Glandon (2024 Vice Chair, Landscape Architect),  
Secretary of State Steve Hobbs, Senator Sam Hunt, Senator Phil Fortunato, Representative Beth Doglio,  
Representative Joel McEntire, Alex Rolluda (Architect-1), and Jordan Kiel (Architect- 2)*

**AUGUST 15, 2024**

(REMOTE ACCESS MEETING)

### **7 – Buildings and Grounds Overview**

#### **INFORMATIONAL ITEMS**

- A. OLMSTED PLAQUE**
- B. BIG BELLY TRASH CANS**
- C. BIKE CAGES**
- D. MARATHON TRIALS SIGNAGE**



## Capitol Campus Advisory Committee

August 15, 2024

### **7A- Olmsted Commemorative Plaque**

Purpose: Informational

Sponsor(s): Department of Enterprise Services

Presenters: Dr. Brent Chapman; [brent.chapman@des.wa.gov](mailto:brent.chapman@des.wa.gov); 360-972-0753

#### **Description:**

Following guidelines in WAC 200-230, DES is proposing to install a 12" x 18" bronze commemorative plaque on a granite base to honor the Olmsted Brothers historic west campus landscape design. The plaque would be installed between Tivoli Fountain and the Medal of Honor, along the main east/west axis that defines west campus.

The guidance included in WAC 200-230-090 provides for standards of minor works on State Capitol Grounds. It states, "...Plaques. Historic markers describing a memorialized person, historic place or event, or plaques describing a work or identifying significant natural features shall be fabricated to meet the following standards:

- (1) Material - Cast bronze.
- (2) Letter style - Bookman.
- (3) Border style - Single line edge.
- (4) Background texture - Pebble.
- (5) Finish - Bronze satin face and edges, natural colored background, semi-gloss polyurethane finish.
- (6) Size - No larger than two hundred sixteen square inches (approximately 12" x 18"), no smaller than eighty square inches (approximately 8" x 10").
- (7) Mounting - Plaques shall be mounted on a concrete or cut stone base with a tilted face 12" or less above grade, to be determined by location of the plaque.

The Olmsted Brothers is an internationally recognized landscape architecture firm that has created the landscape designs for 11 state capitol grounds. Their design for the Washington State Capitol grounds was completed in 1929. Their design integrates a variety of trees, shrubs, flowers woodlands, water bodies, civic buildings and monuments to create an enjoyable and educational experience for visitors.

There is not any interpretive information present on campus to honor and share this legacy with the general public. Stakeholder feedback gathered during the LCM process suggested adding a commemorative plaque to west campus for the Olmsted Brothers landscape design.

**Next Steps:**

Make same presentation at the next SCC.

**Requested Action:**

This is an informational item. No action by CCDAC is necessary.

**List of Attachments:**

Attachment: 7AA: CCDAC Olmsted Plaque



# CAPITOL CAMPUS DESIGN AND ADVISORY COMMITTEE

08 15 2024

Dr. Brent Chapman, Horticulturist and Grounds Property Manager  
Buildings and Grounds

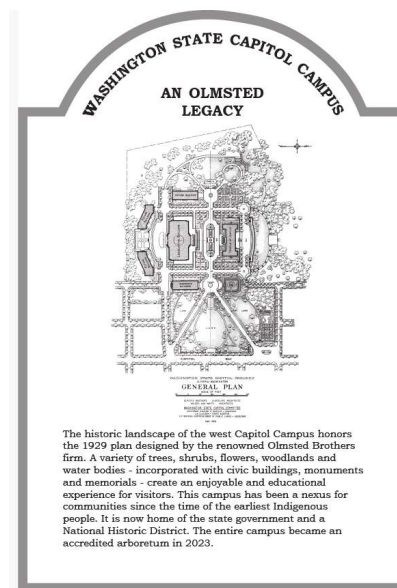


Washington State  
DEPARTMENT OF  
ENTERPRISE SERVICES

1

## OLMSTED BROTHERS COMMEMORATIVE PLAQUE

- The DES Sign Committee has approved a new commemorative plaque honoring the Olmsted Brothers historic landscape design
- The plaque follows WAC 200-230 guidelines
- The bronze plaque will be 12" x 18" and installed on a granite base
- Friends of Seattle's Olmsted Parks and DES Communications provided consultation on the text and sign layout



2

## SIMILAR PLAQUE ON WEST CAMPUS



3

## PROJECT LOCATION: WEST CAMPUS



4

## PROJECT SCHEDULE

|                               |   |
|-------------------------------|---|
| September 19, 2024:           | Present proposal to the State Capitol Committee |
| Before end of November, 2024: | Prep site for installation                      |
| Before start of 2025 session: | Installation of plaque                          |

5

# THANK YOU



[brent.chapman@des.wa.gov](mailto:brent.chapman@des.wa.gov)



360-972-0753



[des.wa.gov](http://des.wa.gov)

6





## Capitol Campus Advisory Committee

August 15, 2024

### **7B- Big Belly Trash Can Project**

Purpose: Informational

Sponsor: Dept of Enterprise Services Buildings & Grounds  
Presenters: Cory Noffsinger, Support Services Manager;  
360-485-2515; [cory.noffsinger@des.wa.gov](mailto:cory.noffsinger@des.wa.gov)

#### **Description:**

In 2023 the Dept. of Enterprise Services Buildings & Grounds (B&G) began a pilot program to install new trash cans to replace the permanent curbside style 95 gallon trash cans. The goal was to reduce excessively heavy containers when full with something more manageable for B&G staff removing trash, increase the visual esthetic for visiting public to the Capitol Campus and begin taking advantage of the design and networking ability of modern waste handling equipment. For this endeavor Big Belly Smart Trash & Recycle Cans were chosen.

Sylvester Park was selected for the Big Belly Pilot Program due to its high public use and visibility. Additionally, its primary waste receptacles were the 95 gallon curb style bins which didn't match the visual representation of the vision for the park by DES Management. It was the goal these new Big Belly waste containers would be easier to manage for staff, reduce excessively heavy & bulky waste due to its design features and be more visibly pleasing to the public.

The results have been overwhelmingly positive from DES staff and park visitors. Staff report that they no longer have bins that are too heavy to move. They also report that waste such as sleeping bags, car batteries and bulk household trash is no longer being dumped in the park. Their slimmer design and lower profile has increased visibility in the park and better match the vision for a pleasing visitor experience.

#### **Next Steps:**

Next steps for the Big Belly installation program:

- Install 1 Big Belly each at Marathon Park & Interpretive Center Boardwalk
- Install 2 Big Belly Waste Containers, 1 trash & 1 recycle at the NW Corner of the Winged Victory Circle
- Install 1 Big Belly Waste Container for trash at the Legislative Bldg SE Entrance under the Magnolia Tree

#### **Requested Action:**

<<INFORMATIONAL ITEM>>

This is an informational item. No action by CCDAC is necessary.

**List of Attachments:**

Attachment:

PowerPoint: 7BB: CCDAC Big Belly Presentation

# CAPITOL CAMPUS DESIGN AND ADVISORY COMMITTEE

08 15 2024

Cory Noffsinger, Support Services Manager  
Buildings and Grounds



Washington State  
DEPARTMENT OF  
ENTERPRISE SERVICES

1

## BIGBELLY – SYSTEM OVERVIEW

### Portfolio of Waste & Recycling Bins

- High & Standard capacity bins
- Choice of waste & recycling interface options
- Standard & customizable graphics
- Assortment of accessories

### Suite of Software Tools

- CLEAN™ Management Console
- CLEAN™ Mobile apps



2



2

## BIG BELLYS CURRENTLY IN USE AT SYLVESTER PARK

- ✓ Neat/clean appearance and ease of service
- ✓ Meets ADA requirements



3

## BIG BELLYS – WHAT'S NEXT FOR THE WEST CAMPUS?

- ✓ Placement of a single near the Legislative Bldg. SE entrance for trash only
- ✓ Placement of a pair in the Winged Victory Circle in the NW corner; one for trash one for recycle



4

## STAKEHOLDER INPUT & COMMUNICATIONS: WEST CAMPUS BIG BELLYS

|                |  |
|----------------|--|
| November 2023: | Met with Senate, House, Governor, Lt Governor, Sec State, Treasurer & LSS Facility Managers for input        |
| May 2024:      | Again, met with Governor, Lt Governor, Senate, House, Sec State, Treasurer & LSS Facility Managers for input |
| Feedback:      | Positive response by all to appearance, ease of use. Questions were regarding possible use for signage       |

5

# THANK YOU



[cory.noffsinger@des.wa.gov](mailto:cory.noffsinger@des.wa.gov)



360-485-2515



[des.wa.gov](http://des.wa.gov)

6



## Capitol Campus Advisory Committee

August 15, 2024

### **7C- West Campus Bicycle Racks**

Purpose: **Informational**

Sponsor(s): DES Buildings and Grounds

Presenters: Tamara Hayes, [tamara.hayes@des.wa.gov](mailto:tamara.hayes@des.wa.gov), 360-763-2956

#### **Description:**

DES provides many bicycle racks on west campus for use by employees and the public. Current bicycle racks are located on the south side of the Helen Sommers Building, the north side of the Temple of Justice, the north side of the Insurance Building, the north side of the Legislative building, the south side of the O'Brien Building and the south side of the Cherberg Building.

An informal survey of Visitor Services and Grounds employees revealed that none of current bicycle racks are used to capacity.

There are plans to add new bicycle parking options on the south side of the O'Brien Building (??? for employees), around the Newhouse Building (16 bicycle capacity), around the Pritchard Building (8 for the public and 8 for employees) and as part of the new GA parking lot (??? bicycle capacity).

There have also been upgrades to bicycle parking on the east campus. ????????????????

#### **Next Steps:**

Update electronic campus map to include missing bicycle rack locations.

#### **Requested Action:**

##### **INFORMATIONAL ITEM**

This is an informational item. No action by CCDAC is necessary.

#### **List of Attachments:**

Attachment: 7CC: CCDAC bicycle racks

# CAPITOL CAMPUS DESIGN AND ADVISORY COMMITTEE

08 15 2024

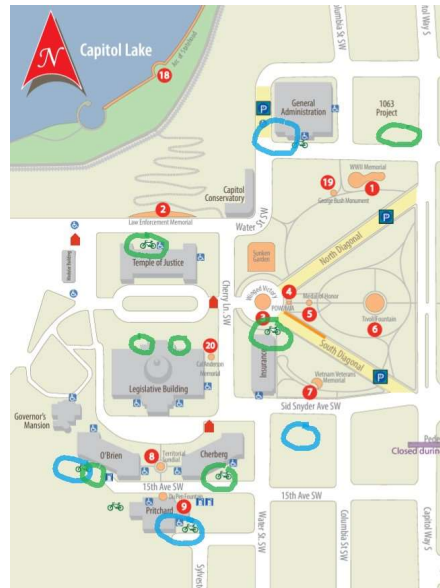
Dr. Brent Chapman: Horticulturist/Grounds Property Manager  
Buildings and Grounds



1

## WEST CAMPUS BICYCLE RACKS

- Green marker = existing (public & employee)
- Blue marker = planned (public & employee)



2



## WEST CAMPUS BICYCLE RACKS - EXISTING



NE Legislative



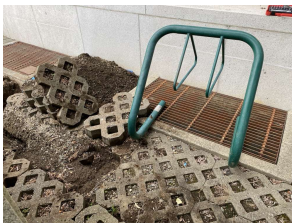
NW Legislative



North TOJ



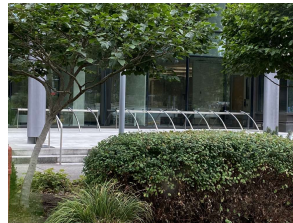
North Insurance



South Cherberg



South JLOB



South HSB

3

## WEST CAMPUS BICYCLE RACKS – PLANNED & FUNDED

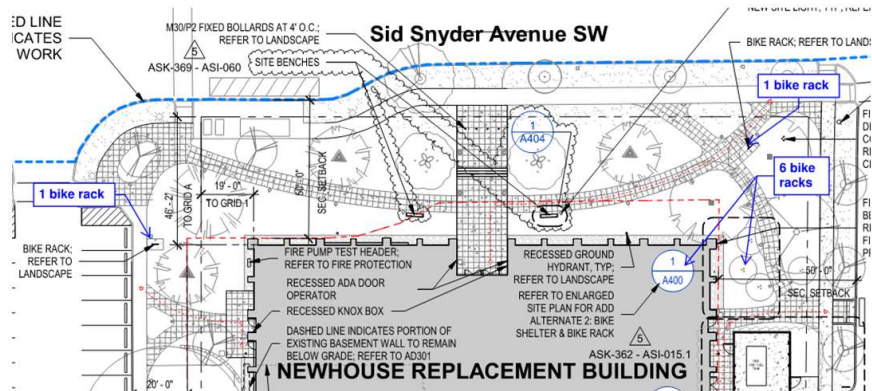


**South JLOB:** covered, secured for 15-20 House employee bicycles, including e-charging and a bike repair station.

4



## WEST CAMPUS BICYCLE RACKS – PLANNED & FUNDED



**Newhouse:** 8 bike racks: 6 under the bicycle shelter on the east side of the building and 2 in front of the building along the pathway. Each bicycle rack is designed for 2 bicycles.

5

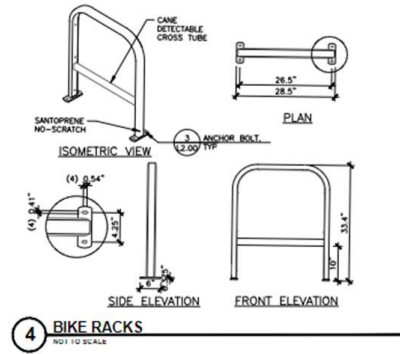
## WEST CAMPUS BICYCLE RACKS – PLANNED & FUNDED

**Pritchard:** 4 bicycle racks for public that support 8 bicycles and 4 bicycle lockers for employees only that support 8 bicycles.

6

## WEST CAMPUS BICYCLE RACKS – PLANNED FUNDS BEING SOUGHT IN 2025 SESSION

**GA demolition (new public parking lot):** 4 bicycle racks for 8 bicycles



7

## EAST CAMPUS BICYCLE RACKS

All Existing Bike Cages for Employees on East Campus

■ State Employee Bike Cages

- 1 - P1 Level in the Natural Resources Building Garage
- 2 - P2 Level in the Natural Resources Building Garage
- 3 - D Level in the Plaza Garage
- 4 - E Level in the Plaza Garage
- 5 - A Level in the Plaza Garage
- 6 - Service Level in the WSDOT Garage

Buildings and Grounds has recently added outlets for e-bike charging to all of the above bicycle parking areas.



8

# THANK YOU



[brent.chapman@des.wa.gov](mailto:brent.chapman@des.wa.gov)



360-972-0753



[des.wa.gov](http://des.wa.gov)



## Capitol Campus Advisory Committee

August 15, 2024

### **7D- Olympic Women’s Marathon Trial Signage**

Purpose: **Informational**

Sponsor(s): Olympic Women’s Marathon Trials Legacy Committee  
Presenters: Dr. Brent Chapman, DES Horticulturist/Grounds Property Manager,  
360-972-0753, [brent.chapman@des.wa.gov](mailto:brent.chapman@des.wa.gov)  
Denise Keegan, Trials Legacy Committee chair,  
360-790-6270, [dkeegan@cco.net](mailto:dkeegan@cco.net)

#### **Description:**

Submitted by the Trials Legacy Committee

**History:** Marathon Park was dedicated in 1983 in honor of the Olympia area receiving the bid to host the inaugural First-Ever U.S. Women’s Olympic Marathon Trials-- hosted in the Olympia area on May 12, 1984. The finish line for those first U.S. Olympic Marathon Trials was located on Deschutes Parkway – in front of Marathon Park.

In 2004, our committee (then known as The Olympic Trials Legacy Committee) joined Olympic Gold Medalist Joan Benoit Samuelson in dedicating an interpretive marker at Marathon Park to commemorate the event.

The location of that 2004 marker is not easily visible to most Marathon Park visitors. We propose moving the marker to a more prominent location within the park. Further, we propose adding a list of the women who competed in those first historic 1984 Women’s Olympic Marathon Trials. The markers will also include a QR code for easy access to websites to educate park visitors about the historic significance of that event.

At present, the existing marker is located at the back of the Marathon Park parking lot – along the running trail that crosses Capital Lake. We propose the existing marker be moved to a more visible location at the front entrance of Marathon Park.

**PROPOSAL:** Move the existing marker to the grassy area at the front entrance to the park – parallel to the sidewalk on the left as one enters the park. We propose adding one additional interpretive panel next to the relocated original marker with the names of the original Trials participants. The markers would be located approximately 30’ from the front public sidewalk parallel to Deschutes Parkway at the entrance to Marathon Park- approximately halfway between that front sidewalk along Deschutes Parkway and the public restrooms in the park. The marker would be set approximately 2’ from the adjoining curved sidewalk that connects the Deschutes Parkway sidewalk to the public restrooms.

Contrary to the original 2004 marker, the new marker be lowered to approximately 26” high at the lowest point and 40” high at the highest point (to accommodate ADA requirements.) The markers would be the same size as the existing 2004 marker (24” by 36”). The two markers would be installed using the same (or parallel) posts.

**VISIBILITY AND SAFETY:** The markers would be installed at the same angle as the existing sidewalk – approximately 2' from the sidewalk to ensure safety for those using the sidewalk. These markers would not inhibit line of sight into the park and would be easily

**Next Steps:**

Integrate any suggestions from CCDAC and present proposal to the State Capitol Committee in September, 2024.

**Requested Action:**

**INFORMATIONAL ITEM**

This is an informational item. No action by CCDAC is necessary.

**List of Attachments:**

Attachment: 7DD: CCDAC Marathon Trial signage

# CAPITOL CAMPUS DESIGN AND ADVISORY COMMITTEE

08 15 2024

Dr. Brent Chapman, Horticulturist and Grounds Property Manager  
Buildings and Grounds



Washington State  
DEPARTMENT OF  
ENTERPRISE SERVICES

1

## WOMEN'S MARATHON TRIAL INTERPRETIVE SIGNS

- The DES Sign Committee has approved the Olympic Women's Marathon Trial Legacy Committee's proposal for the relocation of the existing 2' x 3' interpretative sign and the installation of a new 2' x 3' companion sign next to it in Marathon Park
- The location of the existing sign is quite obscure.



2

## WOMEN'S MARATHON TRIAL INTERPRETIVE SIGNS

- The new companion sign will list the names of the Marathon Trial participants.
- Both signs will be placed 2' back from the existing sidewalk and placed in a mulched bed for easier maintenance by DES Grounds



3

## PROJECT SCHEDULE

|                     |  |
|---------------------|--|
| September 19, 2024: | Present proposal to the State Capitol Committee          |
| Before end of 2024: | Sign and stand fabrication                               |
| Early 2025:         | Relocation of existing sign and installation of new sign |

4

# THANK YOU



[brent.chapman@des.wa.gov](mailto:brent.chapman@des.wa.gov)



360-972-0753



[des.wa.gov](http://des.wa.gov)





Washington State  
**DEPARTMENT OF  
ENTERPRISE SERVICES**

## **Capitol Campus Design Advisory Committee**

*Marc Daily (2024 Chair, Urban Planner), Kristin Glandon (2024 Vice Chair, Landscape Architect),  
Secretary of State Steve Hobbs, Senator Sam Hunt, Senator Phil Fortunato, Representative Beth Doglio,  
Representative Joel McEntire, Alex Rolluda (Architect-1), and Jordan Kiel (Architect- 2)*

**AUGUST 15, 2024**

(REMOTE ACCESS MEETING)

### **8 – Campus Memorials Update**

#### **INFORMATIONAL ITEM**

**A. CAL ANDERSON MEMORIAL**

**B. FALLEN FIREFIGHTER MEMORIAL**



## Capitol Campus Design Advisory Committee

August 15, 2024

### **8- Campus Memorials- Cal Anderson Memorial**

Purpose: **Informational**

Sponsor(s): Washington State Department of Enterprise Services  
Presenters: Aaron Luoma, HBB Seattle- Landscape Architect firm,  
[aluoma@hbbseattle.com](mailto:aluoma@hbbseattle.com), (206)931-6105

#### **Description:**

The Department of Enterprise Services (DES) has been engaged in stakeholder meetings on an envisioned Cal Anderson Memorial on the Capitol Campus. In February 2024, DES and stakeholders conducted a walking tour to establish preferred siting locations for the new memorial. A site just east of the Sunken Garden is the preferred site for this new memorial.

During the 2024 Legislative Session, the Legislature funded \$75,000 through [ESSB 5949](#), Supplemental Capital Budget, to begin pre-design of the new memorial. DES executed a contract with Landscape Architect firm HBB Seattle to carry out the pre-design process.

HBB Seattle is engaging a stakeholder group in a series of meetings that concludes in December of 2024. The stakeholder meetings will include conceptual designs and also plans for installation and maintenance cost of the memorial. Stakeholders include the Washington State LGBTQ Commission, Department of Veterans Affairs (DVA), Secretary of State (SOS), Washington State Arts Commission, State Legislators and their constituents, and LGBTQ advocacy groups.

#### **Next Steps:**

- An update on the Cal Anderson Memorial will be presented to SCC at its 3<sup>rd</sup> quarter meeting as informational.
- The landscape architect will engage the stakeholder group in several meetings through December to confirm conceptual design.

#### **Requested Action:**

<<INFORMATIONAL ITEM>>

This is an informational item. No action by CCDAC is necessary.

#### **List of Attachments:**

Attachment: <<ADD Y- Agenda Title Item Name>> Presentation, <<ADD Presentation Date>>  
<<OR>> No Attachments.

# SENATOR CAL ANDERSON MEMORIAL

CCDAC Meeting #1  
August 15, 2024



1

1

## Goals

- Honor Senator Cal Anderson as a civil rights champion and Washington's first openly gay legislator
- Honor Senator Cal Anderson for his service in the Vietnam War
- Reflect his character and legacy in the memorial design
- Quiet location for a contemplative space
- Provide an inclusive and accessible space for users to feel safe
- Complement the historic West Capitol Campus

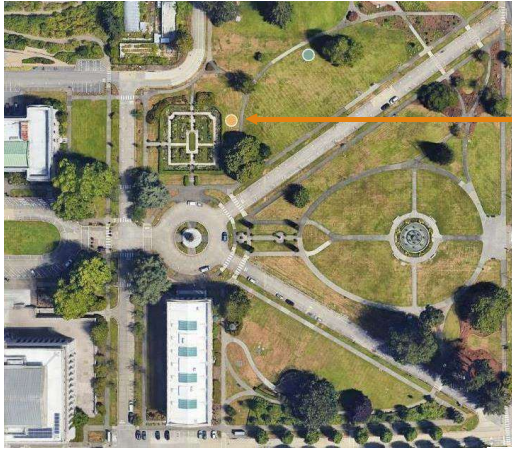


CCDAC Meeting #1  
CAL ANDERSON MEMORIAL

2

2

# Site Location



East of the Sunken Garden

Memorial Guidelines

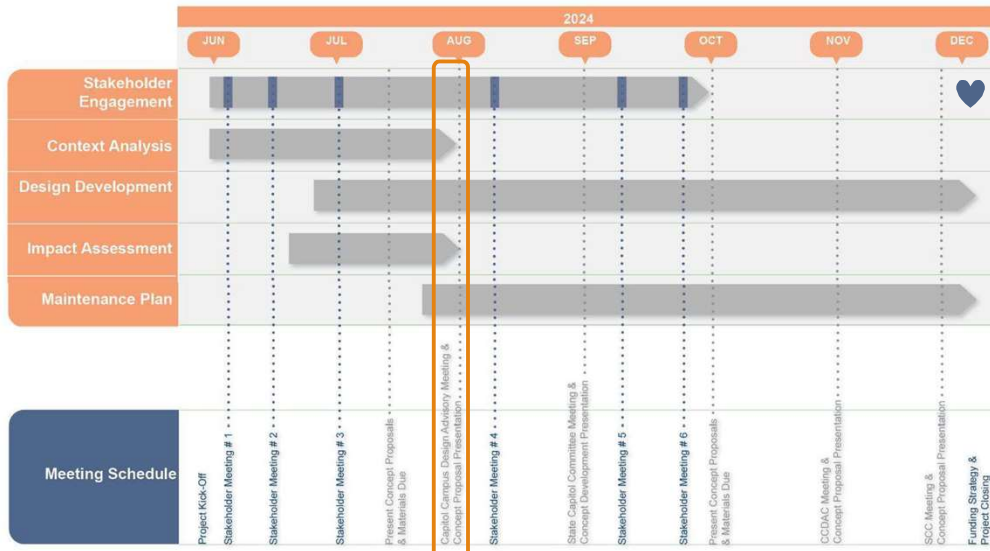


- WAC 200 – 230:  
 (6a) Minor works shall honor an individual  
 Minor works may include small artistic works and sculptural elements;
- Plaques
  - Living memorials (trees, shrubs, gardens or other plantings)
  - Fixtures or furnishings



3

# Schedule



We are here

4

## What we have heard...(and still listening)

First openly gay legislator    Overcame    Incremental  
 Stood up    Direct    Collaborative    Challenged  
 Transparent    Determined    Life in the trenches  
 Warm & Cheerful    Contemplative    Legacy  
 Hopeful    Vietnam war veteran    Groundbreaking  
 Perseverance    Meticulous    Meditative  
 Connectivity    Adventure    Educate    Forcefulness

CCDAC Meeting #1  
CAL ANDERSON MEMORIAL
5

5

## What we have heard...(and still listening)

**Legacy**  


**Meticulous**  


**Incremental**  


**Hopeful**  


**Adventure**  


**Perseverance**  


**Determined**  


**Collaborative**  


**Life in the trenches**  


**Overcame**  


**Connectivity**  


**Challenged**  


**Determined**  


**Meditative**  


**Groundbreaking**  


**Transparent**  


**Vietnam war veteran**  


**Forcefulness**  


CCDAC Meeting #1  
CAL ANDERSON MEMORIAL
6

6



## Interpreting we have heard...(and still listening)

The collage features the following labeled images:

- First openly gay legislator**: A tall, narrow, multi-colored glass sculpture.
- Meticulous**: A close-up of a stone wall with intricate patterns.
- Legacy**: A circular stone structure in a wooded area.
- Overcame**: A winding stone path through a forest.
- Transparent**: A long, thin, black metal sculpture on a lawn.
- Meditative**: A large, smooth, grey rock formation.
- Life in the trenches**: A deep, narrow trench cut into a grassy field.
- Adventure**: A circular stone structure on a grassy hill.
- Collaborative**: A large, domed building with a dome.
- Perseverance**: A set of wide, grey stone steps.
- Challenged**: A circular stone structure in a wooded area.
- Vietnam War Veteran**: A tall, thin, black metal sculpture.
- Forcefulness**: A long, straight, dark metal path on a lawn.
- Groundbreaking**: A circular stone structure in a wooded area.
- Determined**: A circular stone structure in a wooded area.
- Stood up**: A circular stone structure in a wooded area.
- Connectivity**: A circular stone structure in a wooded area.
- Hopeful**: A circular stone structure in a wooded area.

CCDAC Meeting #1  
CAL ANDERSON MEMORIAL

7

7

## Historical Analysis

**Key**

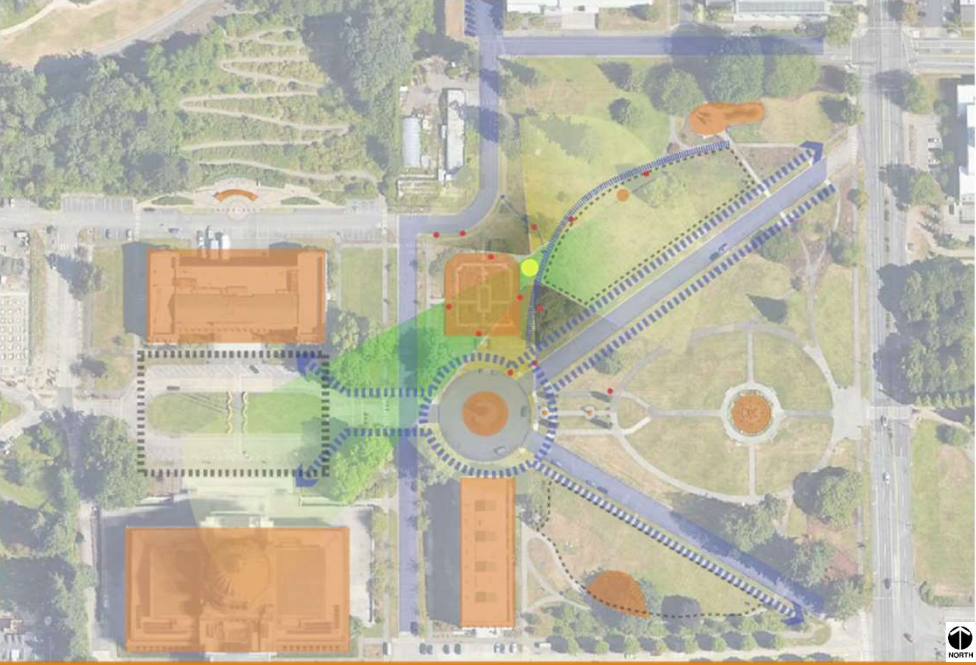
- Formal Landscape, Civic Center
- Formal Landscape, Feature Gardens / Memorial
- Greenward, Formal
- Greenward, Informal
- Street Edge
- Mansion
- Native Edge
- Transitional

CCDAC Meeting #1  
CAL ANDERSON MEMORIAL

8

8

## Social Analysis




CCDAC Meeting #1  
CAL ANDERSON MEMORIAL

9

NORTH

9

## Environmental Analysis



CCDAC Meeting #1  
CAL ANDERSON MEMORIAL

10

NORTH

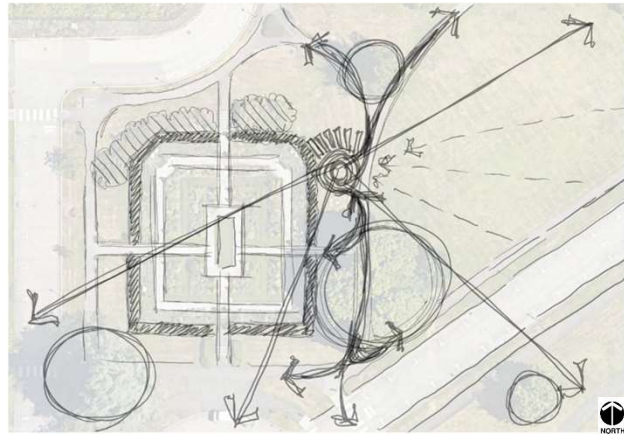
10



# Conceptual Composite Analysis

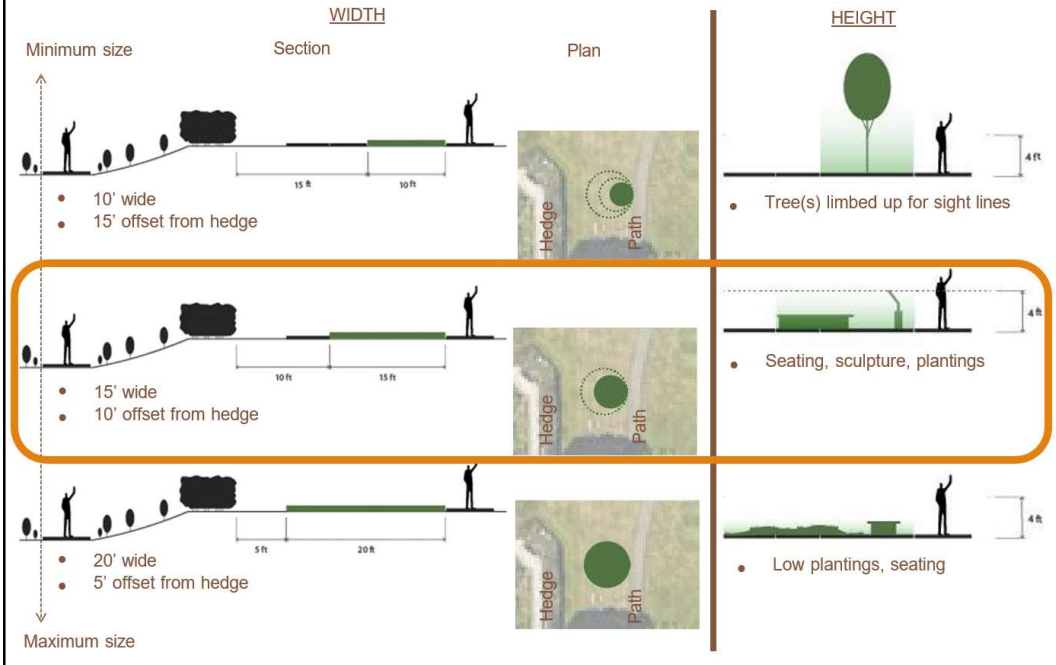
Initial Design Thoughts:

- Dual purpose to sit, meditate, contemplate towards views of legislative building and greensward.
- Opportunity to make announcements, proclamations, educate towards greensward.
- Complement curvilinear greensward and pastoral landscape to provide contrast to sunken garden.
- Buffer views and sounds to north and northwest.
- Consider how the memorial may invite pedestrians from south and be seen from a distance from east and northeast.
- Avoid features of significance over the height of the sunken garden.
- Be transparent, not hidden, break the ground and rhythm of the path to provide a spot to rest and facilitate engagement with the memorial and its message.



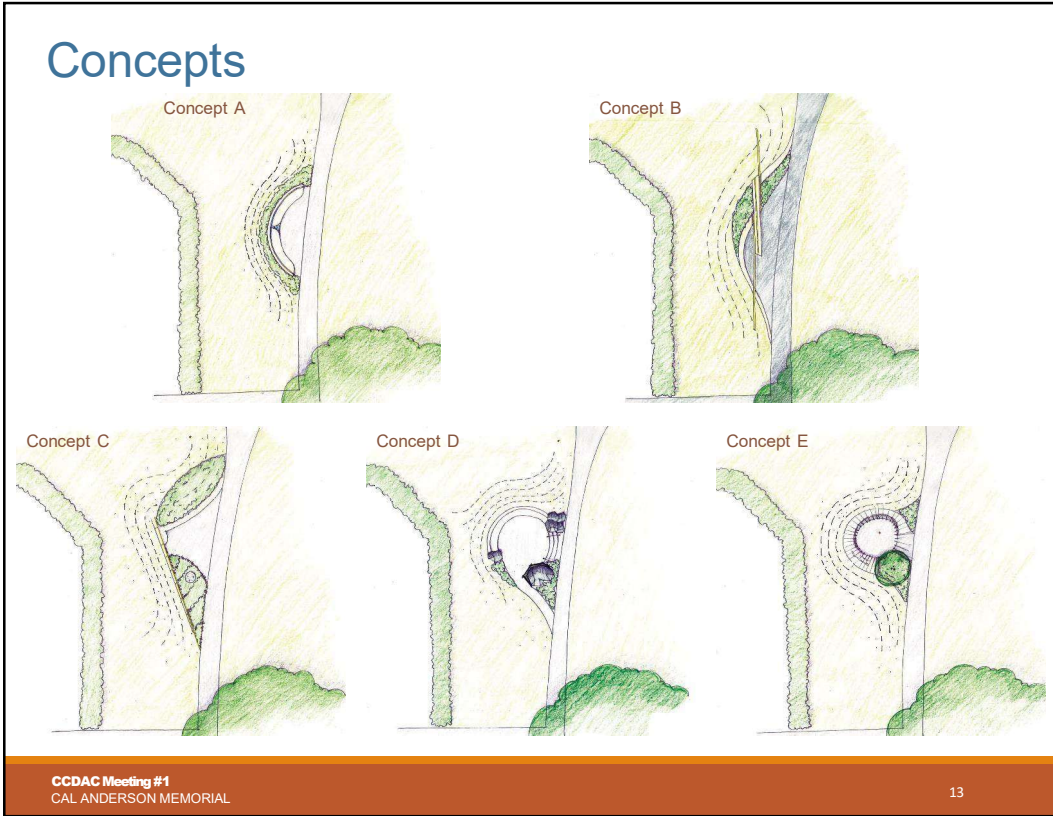
11

# Conceptual Diagrams

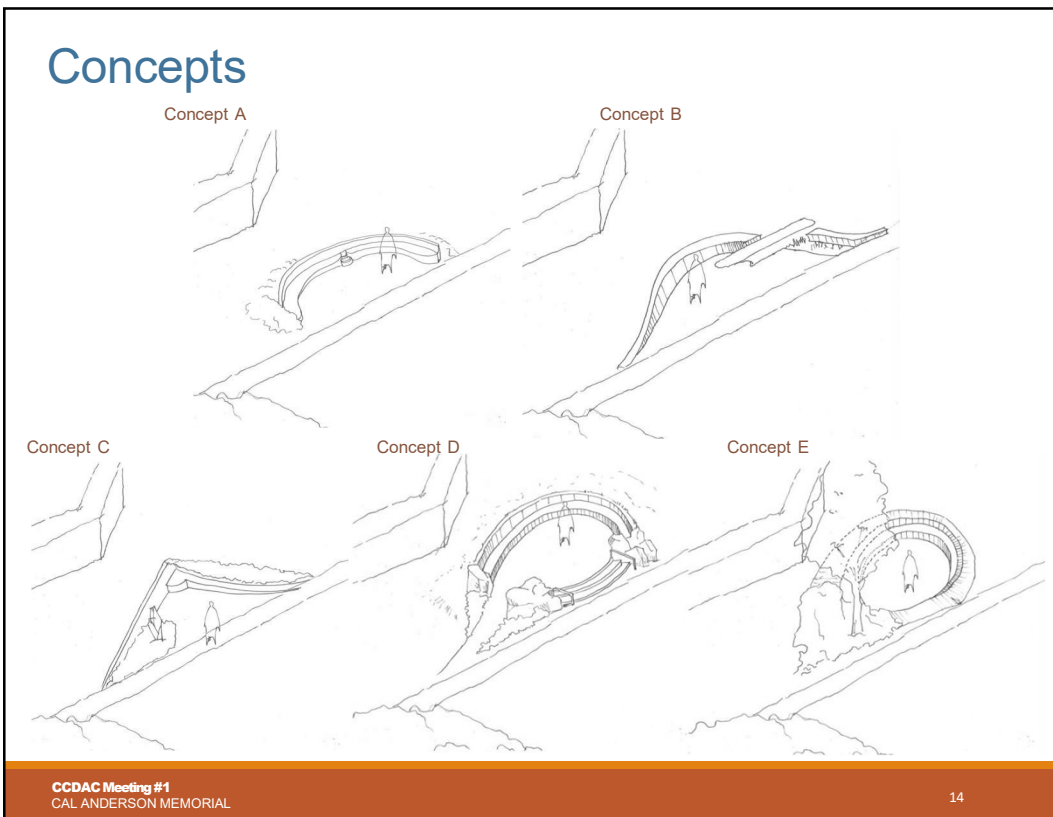


12

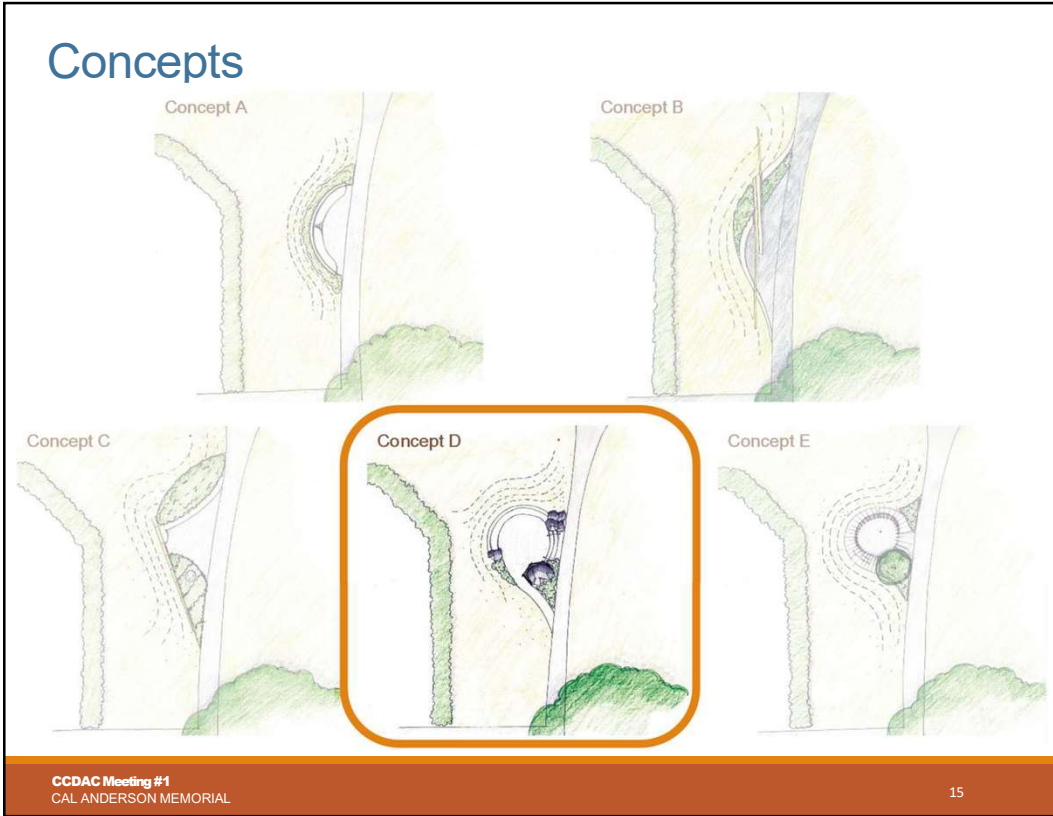




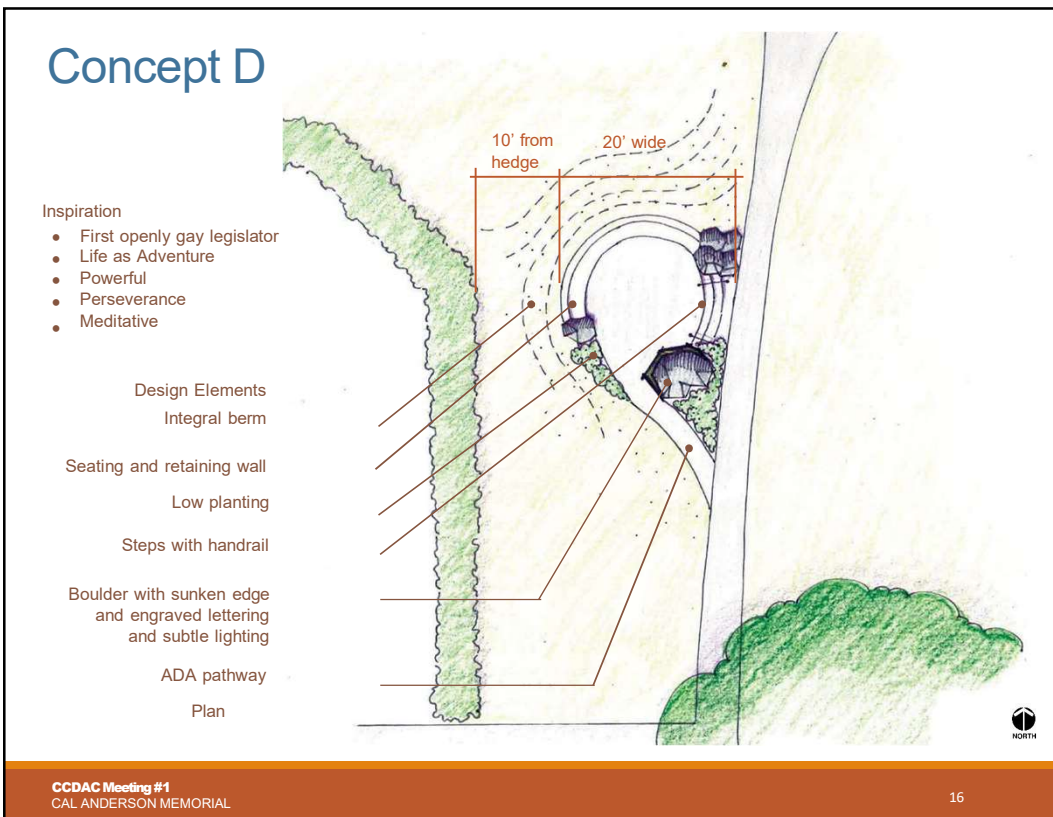
13



14



15



16

# Concept D

Precedent Images

CCDAC Meeting #1  
CAL ANDERSON MEMORIAL

17

17

# Concept

Stakeholder Comments (7/24/24):

- Consider adding a flowering deciduous tree in the NE corner of the memorial with additional groundcover.
- Evaluate opportunities for locating an interpretive sign that could have more detail about Cal Anderson's legacy.
- Need to better understand grade changes proposed.
- Ensure slope of berm is tapered to allow for ease of mowing.
- Incorporate drainage solutions for memorial space.

Deciduous tree and groundcover

18" high seat wall

Memorial space 18" above existing path (3 steps)

Accessible path to memorial space

Plan

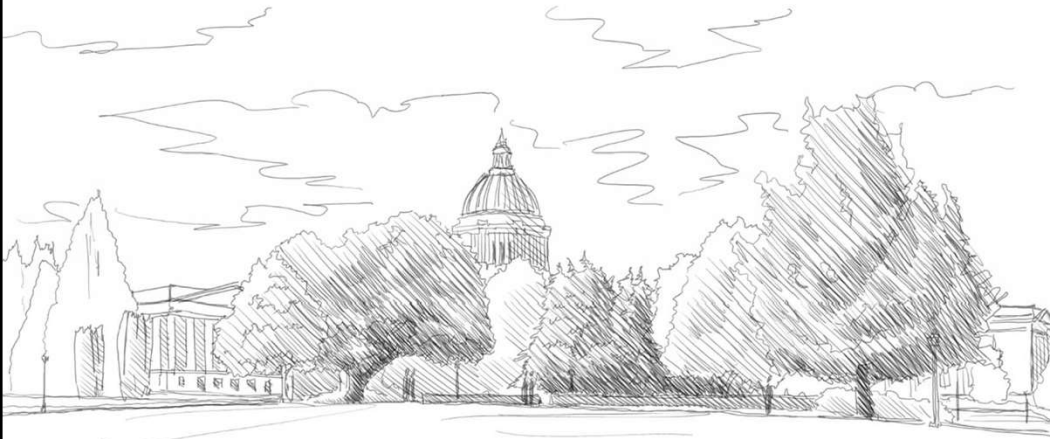
CCDAC Meeting #1  
CAL ANDERSON MEMORIAL

18

18

Thank you!

Questions & Comments?



CCDAC Meeting #1  
CAL ANDERSON MEMORIAL

19





## Capitol Campus Advisory Committee

August 15, 2024

### **8- Fallen Firefighter Memorial**

Purpose: **Informational**

Sponsor(s): Washington State Department of Natural Resources  
Presenters: Brian Considine, Legislative Director, Dept. of Natural Resources,  
[Brian.Considine@dnr.wa.gov](mailto:Brian.Considine@dnr.wa.gov), (360)764-0013

#### **Description:**

During the 2024 Legislative Session, the Legislature passed Substitute House Bill (SHB) [2091](#), which establishes a Fallen Firefighter Memorial on the Capitol Campus. This new memorial will recognize the sacrifice of firefighters who have died in the line of duty. It will feature a memorial that will fit the size of scale that includes the names of 300 fire fighters who have died in the line of duty and be able to add names to the memorial over time. It will also host an annual event that is put on each year to honor firefighters who have lost their lives in the line of duty.

Following the legislation, the effort to create the memorial moves through the major works process as outlined by [WAC 200-230](#) to include siting the memorial, identifying installation and maintenance costs, and the need for a recommendation of the proposal from the Capitol Campus Design Advisory Committee (CCDAC) and final approval from the State Capitol Committee (SCC).

The proposal to install a new memorial dedicated to the Fallen Firefighters has been submitted to the DES Director with supplemental documentation including proposed siting.

#### **Next Steps:**

- SCC will hear this item as informational at its 3<sup>rd</sup> quarter meeting.
- CCDAC will hear this item as decisional at its 4<sup>th</sup> quarter meeting.
- SCC will hear this item as decisional at its 4<sup>th</sup> quarter meeting.

#### **Requested Action:**

#### **INFORMATIONAL ITEM**

This is an informational item. No action by CCDAC is necessary.

#### **List of Attachments:**

Attachment: 8BB- Fallen Firefighter Memorial supplemental documentation.



**DEPARTMENT OF  
NATURAL RESOURCES**

**OFFICE OF THE COMMISSIONER  
OF PUBLIC LANDS**

1111 WASHINGTON ST SE  
MS 47001  
OLYMPIA, WA 98504-7001

**360-902-1000**  
[WWW.DNR.WA.GOV](http://WWW.DNR.WA.GOV)

August 8, 2024

Director Tara C. Smith  
Department of Enterprise Services  
1500 Jefferson St Se  
Olympia, WA 98501

Re: Fallen Firefighter Memorial

Dear Director Smith,

The Legislature unanimously passed House Bill 2091 this past session and it establishes a Fallen Firefighter Memorial on Capitol Campus grounds (*see* Exhibit 1). The bill was filed by Commissioner Franz and the Department of Natural Resources (DNR) as agency request legislation. Senators Van De Wege and Braun and Representatives Bronoske and Griffey were the prime sponsors of companion bills SB 5946 and HB 2091, respectively, and over forty legislators signed onto these bills, including legislators who oversee the major works process. Additionally, the bill was supported by our Fire Service partners, including the Washington State Council of Fire Fighters, the Washington Fire Chiefs, the Washington State Fire Fighters' Association, and the Fallen Firefighters Memorial Foundation.

Passage of HB 2091 continues a legacy that the Legislature established in 1989 when they created a memorial in the Cherburg Building on Capitol Campus (*see* Exhibit 2). Unfortunately, the original memorial was lost during the Nisqually Earthquake and now is the right time to re-establish a memorial that matches the size and significance of other contemporary memorials on Capitol Campus.

The Legislature and public were deeply moved and impacted by the show of support and significance of this project for all fire fighters across the state (*see* Exhibit 3). Approximately 300 firefighters have died in the line of duty in Washington since 1891 and we unfortunately lose about five fire fighters every year. Once built, this memorial will be a permanent place and destination where fire fighters, family members, and the public can have a space to reflect and remember those who paid the ultimate sacrifice for their public service.

Additionally, as part of our agency process and collaborative approach, we worked closely with DES staff to ensure that HB 2091 was a bill that would work for DNR, our partners and DES as the agency responsible for siting and maintaining the memorial once it is constructed. We are very grateful for all the DES assistance and collaboration we have received, and we look forward to continuing to work with staff, agency partners, and the Legislature to site and build this memorial.

As part of the major works process, we recognize the next step for us in the process is to secure a site on Capitol Campus for the memorial and then work on a design once a site is secured. DNR and our Fire Service partners have been working with DES staff on possible site locations since November 2023. We recognize that there are other projects also looking for sites on Capitol Campus and DNR is happy to have worked with DES staff and the Cal Anderson Memorial leaders to ensure the preferred Cal Anderson Memorial location could be located without any interference from the Fallen Firefighter Memorial.

With those conversations and site visits in mind, we believe the best site suited for the Fall Firefighter Memorial is a location on the Northeast portion of the great lawn near the northern diagonal road (*see* Exhibit 4). This location meets the needs of our Fire Service partners, including its accessibility for an annual memorial service, and it factors in considerations from DES staff regarding the location for the project. Siting the memorial there will be a great addition to this part of Capitol Campus and can be a connection point for visitors as they walk this part of the campus.

Additionally, DNR and our Fire Service Partners want you to consider building in flexibility for this location to ensure we can properly design the memorial for this location (*see* Exhibit 5). We expect this memorial's footprint to be comparable to the Law Enforcement and World War II Memorials and want to make sure there is sufficient flexibility to allow the design to reflect the needs of DES, the Capitol Campus master plan, the CCDAC and State Capitol Committees, DNR and our Fire Service Partners.

Once we have approval for a site location, then we can begin the design process. DNR received a \$371,000 appropriation in the supplemental capital budget for the design and initial implementation of the memorial. Our hope is that we will be able to begin to use this funding so we can have someone on contract for the pre-design/design of the memorial in the first quarter of 2025. Upon design approval, we will work with our partners and go back to the Legislature for capital budget funding to build the memorial (*see* Exhibit 6).

Director Tara C. Smith

August 8, 2024

Page 3 of 3

Once the Memorial is built, DNR will work with the Fallen Fire Fighter Foundation to ensure there is sufficient funding for ongoing maintenance of the memorial. The Fallen Fire Fighter Foundation also expects to hold events at the memorial. DNR will also look to promote the memorial across our broad networks to ensure that fire fighters across the state know there is a place for them to remember their heroes who lost their lives.

Lastly, we recognize the important responsibility we have been given to ensure this memorial reflects the needs of our diverse communities. Memorials are an important part of our society. They remind us of our history and the names that are etched in stone are permanent reminders of the people who made the ultimate sacrifice in the line of service and protection of the public and our natural resources.

We look forward to working with you and your staff to ensure that this memorial meets all the requirements of the major works process that leads to us building a Fallen Fire Fighter Memorial that future generations will be proud to visit when they walk Capitol Campus.

Sincerely,

A handwritten signature in black ink, appearing to read "Brian Considine". The signature is fluid and cursive, with a prominent initial "B" and a long, sweeping underline.

Brian Considine  
Legislative Director  
Commissioner of Public Lands Hilary Franz  
Department of Natural Resources

Enclosure (1)



Exhibit 1

CERTIFICATION OF ENROLLMENT

**SUBSTITUTE HOUSE BILL 2091**

Chapter 65, Laws of 2024

68th Legislature  
2024 Regular Session

FALLEN FIREFIGHTER MEMORIAL

EFFECTIVE DATE: June 6, 2024

Passed by the House February 8, 2024  
Yeas 96 Nays 0

LAURIE JINKINS

**Speaker of the House of  
Representatives**

Passed by the Senate February 29,  
2024  
Yeas 47 Nays 0

DENNY HECK

**President of the Senate**

Approved March 13, 2024 2:09 PM

JAY INSLEE

**Governor of the State of Washington**

CERTIFICATE

I, Bernard Dean, Chief Clerk of the House of Representatives of the State of Washington, do hereby certify that the attached is **SUBSTITUTE HOUSE BILL 2091** as passed by the House of Representatives and the Senate on the dates hereon set forth.

BERNARD DEAN

**Chief Clerk**

FILED

March 14, 2024

**Secretary of State  
State of Washington**

---

**SUBSTITUTE HOUSE BILL 2091**

---

Passed Legislature - 2024 Regular Session

**State of Washington                      68th Legislature                      2024 Regular Session**

**By** House State Government & Tribal Relations (originally sponsored by Representatives Bronoske, Griffey, Leavitt, Fitzgibbon, Chapman, Reed, Ormsby, Ramel, Callan, Rule, Timmons, Bergquist, Goodman, Rude, Fosse, Nance, Ryu, Schmidt, Stearns, Waters, Paul, Reeves, and Kloba; by request of Department of Natural Resources)

READ FIRST TIME 01/31/24.

1            AN ACT Relating to establishing a fallen firefighter memorial;  
2 adding new sections to chapter 43.34 RCW; and creating a new section.

3 BE IT ENACTED BY THE LEGISLATURE OF THE STATE OF WASHINGTON:

4            NEW SECTION.    **Sec. 1.**    The legislature intends to establish a  
5 fallen firefighter memorial on the capitol campus grounds to  
6 recognize the sacrifice of firefighters who have died in the line of  
7 duty giving unselfish service to their communities and the state.

8            NEW SECTION.    **Sec. 2.**    A new section is added to chapter 43.34  
9 RCW to read as follows:

10            (1) A memorial is established on the capitol campus to honor  
11 firefighters who have died in the line of duty. The design and  
12 construction of such a memorial must follow the major works  
13 requirements administered by the department of enterprise services.

14            (2) The state capitol committee, or any subcommittee thereof,  
15 must work with the department of natural resources and statewide  
16 organizations representing firefighters in its role reviewing the  
17 building of the fallen firefighter memorial.

18            NEW SECTION.    **Sec. 3.**    A new section is added to chapter 43.34  
19 RCW to read as follows:

1 (1) (a) The fallen firefighter memorial account is created in the  
2 custody of the state treasurer. All receipts directed to the account  
3 from federal funds, gifts, or grants from private or public sectors,  
4 foundations, or other sources must be deposited into the account.  
5 Expenditures from the account may be used only for the design,  
6 siting, permitting, construction, maintenance, dedication,  
7 continuation, or creation of educational materials related to the  
8 placement of this memorial on the capitol campus. Only the department  
9 of natural resources, with the recommendation from the Washington  
10 state firefighter memorial foundation, may authorize expenditures  
11 from the account. The account is subject to allotment procedures  
12 under chapter 43.88 RCW, but an appropriation is not required for  
13 expenditures.

14 (b) The purpose of the account is to support the establishment  
15 and maintenance of the fallen firefighter memorial. The commissioner  
16 of public lands and department of natural resources may solicit and  
17 accept moneys from gifts, grants, or endowments for this purpose.

18 (2) The department of natural resources is authorized to partner  
19 with the department of enterprise services, under RCW 43.19.125, for  
20 the design, establishment, and maintenance of this new memorial  
21 consistent with the major works requirements for projects on capitol  
22 campus. The partnership must work with nonprofit groups or  
23 foundations, or another state agency, if needed, to ensure the  
24 memorial is utilized by the public and the firefighter community to  
25 recognize, remember, and honor the sacrifice of firefighters who have  
26 died in the line of duty.

27 (a) The department of enterprise services must provide and fund  
28 routine maintenance of the fallen firefighter memorial once the  
29 memorial is completed. Routine maintenance includes basic cleaning of  
30 the memorial, ensuring the lights are functional, detailing the  
31 landscape surrounding the memorial, picking up trash around the  
32 memorial, and removing graffiti that does not require specialized  
33 techniques.

34 (b) The department of natural resources, and any foundation or  
35 nonprofit it contracts with, must provide any nonroutine maintenance  
36 of the memorial, including engraving of new names on the memorial,  
37 and must follow any guidance and process for any nonroutine  
38 maintenance as established by the department of enterprise services.

39 (3) The department of natural resources may adopt rules governing  
40 the receipt and use of funds in the account.

Passed by the House February 8, 2024.  
Passed by the Senate February 29, 2024.  
Approved by the Governor March 13, 2024.  
Filed in Office of Secretary of State March 14, 2024.

--- **END** ---

## Exhibit 2

*SB 5801 passed in 1987, amending RCW 51.32.185 to grant LEOFF 2 members coverage for "presumptive occupational respiratory disease." WSCFF activists said Governor Gardner "cut the heart out of it" because when it came to him for signature, it also included coverage of presumptive heart conditions.*

**STANDING, L-R:** Sen. Frank Warnke, Howard Vietzke (#29, WSCFF leg dir), Jimmy Cason (#31, WSCFF vp), Michael McGovern #1488, WSCFF pres).

**SEATED:** Gov. Booth Gardner.

WSCFF COLLECTION



By 1982, the WSCFF and various member locals worked successfully to get minor changes to LEOFF 2. But even with these changes, the biggest issue remained funding, with that year's calculations putting LEOFF 1's liabilities at \$2.2 billion with assets of only \$692 million. For the 1983-85 biennium, the state actuary recommended appropriation of approximately \$375 million, but the legislature appropriated only about \$200 million. In 1984, the legislature approved an interim legislative study on possible ways to improve LEOFF 2. In the following year, 1985, legislative provisions were added (with a sunset clause to expire in 1989) which allowed a LEOFF 2 member to receive a supplemental disability coverage for duty-related, on-the-job injuries.

During the late 1980s and 1990s, WSCFF members lobbied together to improve their two-tiered pension plan (LEOFF 1 and 2) and to gain new benefits and coverage through other legislation. In addition, the WSCFF, led by President Mike McGovern (Lakewood #1488), established a family medical program for its members and retirees in 1986, and called it the WSCFF **Health and Welfare Trust**. The following year the WSCFF gained passage of presumptive occupational disease legislation (RCW 51.32.185 Occupational diseases—Presumption of Occupational Disease for Fire

Fighters). Although the WSCFF worked hard to have the legislation include lung disease, heart disease, and cancer, by the time it got to Governor Booth Gardner it included only heart and lung disease. Gardner then vetoed all but coverage of lung disease, or as lobbyists explained it, "he cut the heart out of it."

From 1988 through 1993 LEOFF (RCW 41.26) was amended in every legislative session. Improvements included reducing the age for retirement eligibility from age sixty-three to fifty-five (in two separate amendments), greater participation of LEOFF members on their local pension boards, and

formal clarification and increased notification about their coverage to LEOFF members.

While the WSCFF was working to reduce the impact of LEOFF 2 during this period, portability became more important to WSCFF members. The increase in EMS services provided by the fire service brought with it **paramedics** who joined fire departments, having previously been covered under PERS as non-uniformed public employees.



*Howard Vietzke (#29, WSCFF leg dir) stands beside the "Last Alarm" Fallen Fire Fighters Memorial, located in the John A. Cherberg Building in Olympia. Established by an act of the 1989 legislature, it was the last indoor monument or tribute granted on the grounds of the Capitol.*

WSCFF COLLECTION

# HOUSE BILL REPORT

## SHB 2091

---

---

### As Passed Legislature

**Title:** An act relating to establishing a fallen firefighter memorial.

**Brief Description:** Establishing a fallen firefighter memorial.

**Sponsors:** House Committee on State Government & Tribal Relations (originally sponsored by Representatives Bronoske, Griffey, Leavitt, Fitzgibbon, Chapman, Reed, Ormsby, Ramel, Callan, Rule, Timmons, Bergquist, Goodman, Rude, Fosse, Nance, Ryu, Schmidt, Stearns, Waters, Paul, Reeves and Kloba; by request of Department of Natural Resources).

**Brief History:**

**Committee Activity:**

State Government & Tribal Relations: 1/24/24, 1/30/24 [DPS];  
Capital Budget: 2/2/24 [DPS(SGOV)].

**Floor Activity:**

Passed House: 2/8/24, 96-0.  
Passed Senate: 2/29/24, 47-0.  
Passed Legislature.

**Brief Summary of Substitute Bill**

- Establishes a fallen firefighter memorial on the Capitol Campus in Olympia.
- Creates a nonappropriated account for the deposit of gifts, grants, and endowments to support the establishment and maintenance of the memorial.

---

### HOUSE COMMITTEE ON STATE GOVERNMENT & TRIBAL RELATIONS

**Majority Report:** The substitute bill be substituted therefor and the substitute bill do pass.  
Signed by 7 members: Representatives Ramos, Chair; Stearns, Vice Chair; Cheney,

---

*This analysis was prepared by non-partisan legislative staff for the use of legislative members in their deliberations. This analysis is not part of the legislation nor does it constitute a statement of legislative intent.*

Ranking Minority Member; Christian, Assistant Ranking Minority Member; Gregerson, Low and Mena.

**Staff:** Connor Schiff (786-7093).

---

## HOUSE COMMITTEE ON CAPITAL BUDGET

**Majority Report:** The substitute bill by Committee on State Government & Tribal Relations be substituted therefor and the substitute bill do pass. Signed by 27 members: Representatives Tharinger, Chair; Callan, Vice Chair; Hackney, Vice Chair; Abbarno, Ranking Minority Member; McClintock, Assistant Ranking Minority Member; Steele, Assistant Ranking Minority Member; Alvarado, Bateman, Cheney, Christian, Dye, Eslick, Farivar, Fosse, Kloba, Kretz, Maycumber, Morgan, Mosbrucker, Orwall, Peterson, Reed, Rule, Sandlin, Shavers, Stearns and Waters.

**Staff:** John Wilson-Tepeli (786-7115).

### **Background:**

The Capitol Campus in Olympia is home to many memorials for various events and groups of people. These include the World War II Memorial, the Law Enforcement Memorial, the Prisoners of War/Missing in Action Memorial, the Medal of Honor Memorial, the Vietnam Veterans Memorial, and the Korean War Memorial.

### **Summary of Substitute Bill:**

A fallen firefighter memorial is established on the Capitol Campus. Design and construction of the memorial must follow the major works requirements administered by the Department of Enterprise Services (DES). The State Capitol Committee must work with the Department of Natural Resources (DNR) and statewide organizations representing firefighters in reviewing the construction of the memorial. The DNR must partner with the DES on the design, establishment, and maintenance of the memorial. The DNR and the DES may partner with nonprofit groups or another state agency to ensure the memorial is utilized by the public and firefighter community. The DES must provide and fund routine maintenance of the memorial. The DNR must provide nonroutine maintenance of the memorial, including engraving of new names, in accordance with any guidance established by the DES.

The Fallen Firefighter Memorial Account (Account) is created in the custody of the State Treasurer to support the design, construction, permitting, and maintenance of the memorial. The Commissioner of Public Lands and the DNR may solicit and accept funds for the establishment and maintenance of the memorial. The Account is subject to allotment but not appropriation, and only the DNR may authorize expenditures. The DNR may adopt rules governing the receipt and use of funds in the Account.

**Appropriation:** None.

**Fiscal Note:** Available.

**Effective Date:** The bill takes effect 90 days after adjournment of the session in which the bill is passed.

**Staff Summary of Public Testimony (State Government & Tribal Relations):**

(In support) There should be a place for families and communities to commemorate and mourn the lives lost in the line of duty. The loss of a firefighter is devastating to a family and community. Communities across the state have been affected by firefighters making the ultimate sacrifice. A memorial to commemorate firefighters and honor those who have bravely served is overdue. Firefighters are ready to answer any call at any time. The intent of the memorial is to also commemorate individuals whose lives were lost due to occupational hazards. Firefighters face many dangers that cannot be seen or touched and often face health issues down the road. We honor fallen firefighters by learning from them. A tribute to firefighters on the Capitol Campus would allow visitors to also learn from them. The Department of Natural Resources is fully prepared and honored to make the memorial a reality.

(Opposed) None.

**Staff Summary of Public Testimony (Capital Budget):**

(In support) Since 1891 about 300 firefighters have died in the line of duty, including a firefighter who died in the line of duty last week in Walla Walla. There should be a place for families and communities to commemorate and mourn the lives lost in the line of duty. The loss of a firefighter is devastating to a family and community. Communities across the state have been affected by firefighters making the ultimate sacrifice. This memorial has been in the development process for a long time and is reflective of broad stakeholder consensus and support. We honor fallen firefighters by learning from them. A tribute to firefighters on the Capitol Campus would allow visitors to also learn from them. The Department of Natural Resources is well-situated to take on this work and honored to make the memorial a reality. There is a plan to ask for capital budget resources to get the project started and the total cost is estimated at approximately \$5 million.

(Opposed) None.

**Persons Testifying (State Government & Tribal Relations):** Representative Dan Bronoske, prime sponsor; Patrick McElligott, International Association of Firefighters Local 31- Tacoma Fire; Bud Sizemore, Washington State Council of Firefighters; Jeff Faucett, Washington Fire Chiefs; and Brian Considine and George Geissler, Department of Natural Resources.



**Persons Testifying (Capital Budget):** Representative Dan Bronoske, prime sponsor; Brian Considine and George Geissler, Department of Natural Resources; Jeff Faucett, Washington Fire Chiefs; and Bud Sizemore, Washington State Council of Firefighters.

**Persons Signed In To Testify But Not Testifying (State Government & Tribal Relations):** None.

**Persons Signed In To Testify But Not Testifying (Capital Budget):** None.

# Exhibit 4

## PROPOSED MEMORIAL LOCATIONS





Exhibit 5

PROPOSED MEMORIAL LOCATIONS

MEMORIAL KEY

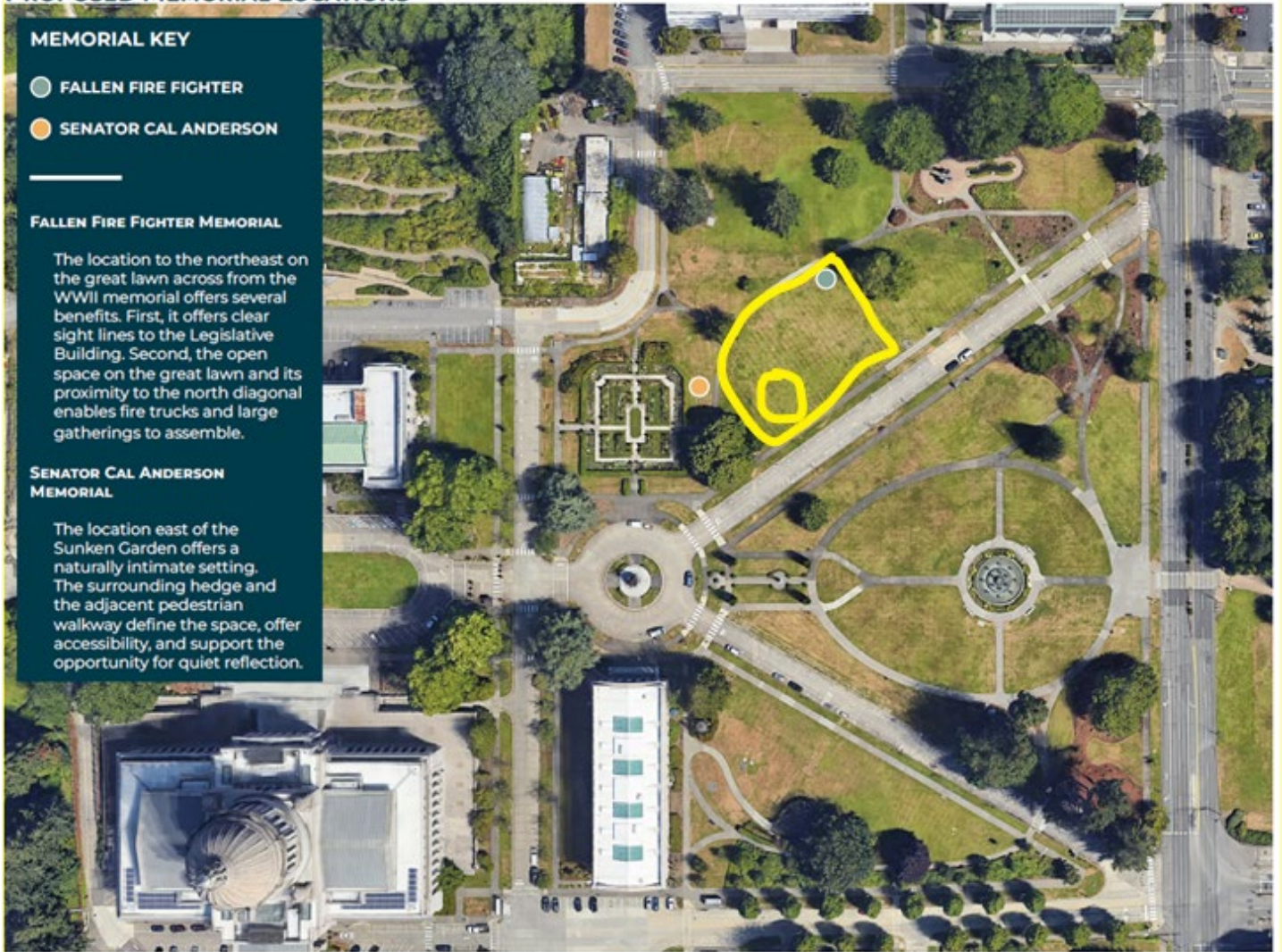
- FALLEN FIRE FIGHTER
- SENATOR CAL ANDERSON

FALLEN FIRE FIGHTER MEMORIAL

The location to the northeast on the great lawn across from the WWII memorial offers several benefits. First, it offers clear sight lines to the Legislative Building. Second, the open space on the great lawn and its proximity to the north diagonal enables fire trucks and large gatherings to assemble.

SENATOR CAL ANDERSON MEMORIAL

The location east of the Sunken Garden offers a naturally intimate setting. The surrounding hedge and the adjacent pedestrian walkway define the space, offer accessibility, and support the opportunity for quiet reflection.



200FT

# Multiple Agency Fiscal Note Summary

|                               |   |
|-------------------------------|---|
| <b>Bill Number:</b> 2091 S HB | <b>Title:</b> Fallen firefighter memorial |
|-------------------------------|---|

## Estimated Cash Receipts

| Agency Name               | 2023-25  |             |       | 2025-27  |             |       | 2027-29  |             |       |
|---------------------------|--|-------------|-------|----------|-------------|-------|----------|-------------|-------|
|                           | GF-State   | NGF-Outlook | Total | GF-State | NGF-Outlook | Total | GF-State | NGF-Outlook | Total |
| Office of State Treasurer | Non-zero but indeterminate cost and/or savings. Please see discussion. |             |       |          |             |       |          |             |       |
| <b>Total \$</b>           | 0  | 0           | 0     | 0        | 0           | 0     | 0        | 0           | 0     |

## Estimated Operating Expenditures

| Agency Name                       | 2023-25 |          |             |        | 2025-27 |          |             |        | 2027-29 |          |             |        |
|-----------------------------------|---------|----------|-------------|--------|---------|----------|-------------|--------|---------|----------|-------------|--------|
|                                   | FTEs    | GF-State | NGF-Outlook | Total  | FTEs    | GF-State | NGF-Outlook | Total  | FTEs    | GF-State | NGF-Outlook | Total  |
| Office of State Treasurer         | .0      | 0        | 0           | 0      | .0      | 0        | 0           | 0      | .0      | 0        | 0           | 0      |
| Department of Enterprise Services | .1      | 47,667   | 47,667      | 47,667 | .1      | 55,667   | 55,667      | 55,667 | .0      | 20,000   | 20,000      | 20,000 |
| Department of Natural Resources   | .0      | 0        | 0           | 0      | .0      | 0        | 0           | 0      | .0      | 0        | 0           | 0      |
| <b>Total \$</b>                   | 0.1     | 47,667   | 47,667      | 47,667 | 0.1     | 55,667   | 55,667      | 55,667 | 0.0     | 20,000   | 20,000      | 20,000 |

## Estimated Capital Budget Expenditures

| Agency Name                       | 2023-25 |         |         | 2025-27 |         |         | 2027-29 |        |        |
|-----------------------------------|---------|---------|---------|---------|---------|---------|---------|--------|--------|
|                                   | FTEs    | Bonds   | Total   | FTEs    | Bonds   | Total   | FTEs    | Bonds  | Total  |
| Office of State Treasurer         | .0      | 0       | 0       | .0      | 0       | 0       | .0      | 0      | 0      |
| Department of Enterprise Services | .0      | 0       | 0       | .0      | 0       | 0       | .0      | 0      | 0      |
| Department of Natural Resources   | .3      | 370,500 | 370,500 | .5      | 418,000 | 418,000 | .3      | 71,500 | 71,500 |
| <b>Total \$</b>                   | 0.3     | 370,500 | 370,500 | 0.5     | 418,000 | 418,000 | 0.3     | 71,500 | 71,500 |

# Estimated Capital Budget Breakout

NONE

| Agency Name       | 2023-25        | 2025-27        | 2027-29       |
|-------------------|----------------|----------------|---------------|
|                   | Total          | Total          | Total         |
| Other             | 11,500         | 12,400         | 6,200         |
| Pre-design/Design | 275,000        | 275,000        | 0             |
| Staff             | 84,000         | 130,600        | 65,300        |
| <b>Total \$</b>   | <b>370,500</b> | <b>418,000</b> | <b>71,500</b> |

The Department of Natural Resources has a revised fiscal note.

**Prepared by:** Lisa Borkowski, OFM

**Phone:**  
(360) 742-2239

**Date Published:**  
Revised 2/22/2024

# Individual State Agency Fiscal Note

|                               |   |  |
|-------------------------------|---|--|
| <b>Bill Number:</b> 2091 S HB | <b>Title:</b> Fallen firefighter memorial | <b>Agency:</b> 090-Office of State Treasurer |
|-------------------------------|---|--|

## Part I: Estimates

No Fiscal Impact

**Estimated Cash Receipts to:**

**Non-zero but indeterminate cost and/or savings. Please see discussion.**

**Estimated Operating Expenditures from:**

NONE

**Estimated Capital Budget Impact:**

NONE

*The cash receipts and expenditure estimates on this page represent the most likely fiscal impact. Factors impacting the precision of these estimates, and alternate ranges (if appropriate), are explained in Part II.*

Check applicable boxes and follow corresponding instructions:

- If fiscal impact is greater than \$50,000 per fiscal year in the current biennium or in subsequent biennia, complete entire fiscal note form Parts I-V.
- If fiscal impact is less than \$50,000 per fiscal year in the current biennium or in subsequent biennia, complete this page only (Part I).
- Capital budget impact, complete Part IV.
- Requires new rule making, complete Part V.

|                                    |                       |                  |
|------------------------------------|-----------------------|------------------|
| Legislative Contact: Connor Schiff | Phone: 360-786-7093   | Date: 01/31/2024 |
| Agency Preparation: Mandy Kaplan   | Phone: (360) 902-8977 | Date: 01/31/2024 |
| Agency Approval: Dan Mason         | Phone: (360) 902-8990 | Date: 01/31/2024 |
| OFM Review: Amy Hatfield           | Phone: (360) 280-7584 | Date: 01/31/2024 |

## Part II: Narrative Explanation

### II. A - Brief Description Of What The Measure Does That Has Fiscal Impact

*Significant provisions of the bill and any related workload or policy assumptions that have revenue or expenditure impact on the responding agency by section number.*

SHB 2091 creates the fallen firefighter memorial account, coupled with the general fund as the recipient of the earnings from investments under RCW 43.79A.040(4).

### II. B - Cash receipts Impact

*Cash receipts impact of the legislation on the responding agency with the cash receipts provisions identified by section number and when appropriate, the detail of the revenue sources. Description of the factual basis of the assumptions and the method by which the cash receipts impact is derived. Explanation of how workload assumptions translate into estimates. Distinguished between one time and ongoing functions.*

Projected cash flows are currently unavailable; therefore, estimated earnings from investments are indeterminable.

There may be an impact on the debt service limitation calculation. Changes to the earnings credited to the general fund impacts, by an equal amount, general state revenues.

### II. C - Expenditures

*Agency expenditures necessary to implement this legislation (or savings resulting from this legislation), with the provisions of the legislation that result in the expenditures (or savings) identified by section number. Description of the factual basis of the assumptions and the method by which the expenditure impact is derived. Explanation of how workload assumptions translate into cost estimates. Distinguished between one time and ongoing functions.*

## Part III: Expenditure Detail

### III. A - Operating Budget Expenditures

NONE

### III. B - Expenditures by Object Or Purpose

NONE

**III. C - Operating FTE Detail:** *FTEs listed by classification and corresponding annual compensation. Totals agree with total FTEs in Part I and Part IIIA.*

NONE

### III. D - Expenditures By Program (optional)

NONE

## Part IV: Capital Budget Impact

### IV. A - Capital Budget Expenditures

NONE

### IV. B - Expenditures by Object Or Purpose

NONE

### IV. C - Capital Budget Breakout

*Acquisition and construction costs not reflected elsewhere on the fiscal note and description of potential financing methods.*

NONE

**IV. D - Capital FTE Detail:** *FTEs listed by classification and corresponding annual compensation. Totals agree with total FTEs in Part IVB.*

NONE

## **Part V: New Rule Making Required**

*Provisions of the bill that require the agency to adopt new administrative rules or repeal/revise existing rules.*



# Individual State Agency Fiscal Note

|                               |   |  |
|-------------------------------|---|--|
| <b>Bill Number:</b> 2091 S HB | <b>Title:</b> Fallen firefighter memorial | <b>Agency:</b> 179-Department of Enterprise Services |
|-------------------------------|---|--|

## Part I: Estimates

**No Fiscal Impact**

### Estimated Cash Receipts to:

NONE

### Estimated Operating Expenditures from:

|                          | FY 2024 | FY 2025 | 2023-25 | 2025-27 | 2027-29 |
|--------------------------|---------|---------|---------|---------|---------|
| FTE Staff Years          | 0.0     | 0.2     | 0.1     | 0.1     | 0.0     |
| <b>Account</b>           |         |         |         |         |         |
| General Fund-State 001-1 | 0       | 47,667  | 47,667  | 55,667  | 20,000  |
| <b>Total \$</b>          | 0       | 47,667  | 47,667  | 55,667  | 20,000  |

### Estimated Capital Budget Impact:

NONE

*The cash receipts and expenditure estimates on this page represent the most likely fiscal impact. Factors impacting the precision of these estimates, and alternate ranges (if appropriate), are explained in Part II.*

Check applicable boxes and follow corresponding instructions:

- If fiscal impact is greater than \$50,000 per fiscal year in the current biennium or in subsequent biennia, complete entire fiscal note form Parts I-V.
- If fiscal impact is less than \$50,000 per fiscal year in the current biennium or in subsequent biennia, complete this page only (Part I).
- Capital budget impact, complete Part IV.
- Requires new rule making, complete Part V.

|                                    |                       |                  |
|------------------------------------|-----------------------|------------------|
| Legislative Contact: Connor Schiff | Phone: 360-786-7093   | Date: 01/31/2024 |
| Agency Preparation: Becky Guyer    | Phone: (360) 407-9254 | Date: 02/05/2024 |
| Agency Approval: Jessica Goodwin   | Phone: (360) 819-3719 | Date: 02/05/2024 |
| OFM Review: Val Terre              | Phone: (360) 280-3073 | Date: 02/05/2024 |

## Part II: Narrative Explanation

### II. A - Brief Description Of What The Measure Does That Has Fiscal Impact

*Significant provisions of the bill and any related workload or policy assumptions that have revenue or expenditure impact on the responding agency by section number.*

Section 1 is a new section added to chapter 43.34 RCW stating the intention of the legislature to establish a fallen firefighter memorial on the capitol campus grounds.

Section 2 is a new section that requires the design and construction of the memorial to follow the major works requirements administered by the Department of Enterprise Services.

Section 3 is a new section that establishes the fallen firefighter memorial account and requires that expenditures from the account are to be used for the design, siting, permitting, construction, maintenance, dedication, continuation, or creation of educational materials related to the placement of the memorial on the capitol campus.

This has fiscal impact to the Department of Enterprise Services.

### II. B - Cash receipts Impact

*Cash receipts impact of the legislation on the responding agency with the cash receipts provisions identified by section number and when appropriate, the detail of the revenue sources. Description of the factual basis of the assumptions and the method by which the cash receipts impact is derived. Explanation of how workload assumptions translate into estimates. Distinguished between one time and ongoing functions.*

### II. C - Expenditures

*Agency expenditures necessary to implement this legislation (or savings resulting from this legislation), with the provisions of the legislation that result in the expenditures (or savings) identified by section number. Description of the factual basis of the assumptions and the method by which the expenditure impact is derived. Explanation of how workload assumptions translate into cost estimates. Distinguished between one time and ongoing functions.*

Implementing this bill would require work of DES staff to help coordinate planning and implementation of the project, as well as ongoing maintenance of the memorial.

We assume the following DES staffing needs:

0.1 FTE - Construction Project Coordinator

0.1 FTE – Facilities Planner

Additional costs necessary to implement the bill include \$2,000 to contract with a Conservator to support the coordination of the project with the Department of Archaeology & Historic Preservation, the historical master plan, and other impacted agencies, as well as ongoing maintenance costs of \$10,000 per year to maintain the memorial itself.

## Part III: Expenditure Detail

### III. A - Operating Budget Expenditures

| Account  | Account Title | Type  | FY 2024 | FY 2025 | 2023-25 | 2025-27 | 2027-29 |
|----------|---------------|-------|---------|---------|---------|---------|---------|
| 001-1    | General Fund  | State | 0       | 47,667  | 47,667  | 55,667  | 20,000  |
| Total \$ |               |       | 0       | 47,667  | 47,667  | 55,667  | 20,000  |

**III. B - Expenditures by Object Or Purpose**

|                                      | FY 2024 | FY 2025 | 2023-25 | 2025-27 | 2027-29 |
|--------------------------------------|---------|---------|---------|---------|---------|
| FTE Staff Years                      |         | 0.2     | 0.1     | 0.1     |         |
| A-Salaries and Wages                 |         | 21,306  | 21,306  | 21,306  |         |
| B-Employee Benefits                  |         | 13,223  | 13,223  | 13,223  |         |
| C-Professional Service Contracts     |         | 2,000   | 2,000   |         |         |
| E-Goods and Other Services           |         | 11,138  | 11,138  | 21,138  | 20,000  |
| G-Travel                             |         |         |         |         |         |
| J-Capital Outlays                    |         |         |         |         |         |
| M-Inter Agency/Fund Transfers        |         |         |         |         |         |
| N-Grants, Benefits & Client Services |         |         |         |         |         |
| P-Debt Service                       |         |         |         |         |         |
| S-Interagency Reimbursements         |         |         |         |         |         |
| T-Intra-Agency Reimbursements        |         |         |         |         |         |
| 9-                                   |         |         |         |         |         |
| <b>Total \$</b>                      | 0       | 47,667  | 47,667  | 55,667  | 20,000  |

**III. C - Operating FTE Detail:** *List FTEs by classification and corresponding annual compensation. Totals need to agree with total FTEs in Part I and Part IIIA*

| Job Classification                 | Salary  | FY 2024 | FY 2025 | 2023-25 | 2025-27 | 2027-29 |
|------------------------------------|---------|---------|---------|---------|---------|---------|
| CONSTRUCTION PROJECT COORDINATOR 3 | 102,540 |         | 0.1     | 0.1     | 0.1     |         |
| FACILITIES PLANNER 2               | 90,624  |         | 0.1     | 0.1     | 0.1     |         |
| <b>Total FTEs</b>                  |         |         | 0.2     | 0.1     | 0.1     | 0.0     |

**III. D - Expenditures By Program (optional)**

NONE

**Part IV: Capital Budget Impact**

**IV. A - Capital Budget Expenditures**

NONE

**IV. B - Expenditures by Object Or Purpose**

NONE

**IV. C - Capital Budget Breakout**

*Acquisition and construction costs not reflected elsewhere on the fiscal note and description of potential financing methods.*

NONE

**IV. D - Capital FTE Detail:** *FTEs listed by classification and corresponding annual compensation. Totals agree with total FTEs in Part IVB.*

NONE

**Part V: New Rule Making Required**

*Provisions of the bill that require the agency to adopt new administrative rules or repeal/revise existing rules.*

# Individual State Agency Fiscal Note

|                               |   |  |
|-------------------------------|---|--|
| <b>Bill Number:</b> 2091 S HB | <b>Title:</b> Fallen firefighter memorial | <b>Agency:</b> 490-Department of Natural Resources |
|-------------------------------|---|--|

## Part I: Estimates

**No Fiscal Impact**

### Estimated Cash Receipts to:

NONE

### Estimated Operating Expenditures from:

NONE

### Estimated Capital Budget Impact:

|                   | 2023-25  |                | 2025-27        |               | 2027-29       |          |
|-------------------|----------|----------------|----------------|---------------|---------------|----------|
|                   | FY 2024  | FY 2025        | FY 2026        | FY 2027       | FY 2028       | FY 2029  |
| Pre-design/Design | 0        | 275,000        | 275,000        | 0             | 0             | 0        |
| Construction      | 0        | 0              | 0              | 0             | 0             | 0        |
| Grants/Loans      | 0        | 0              | 0              | 0             | 0             | 0        |
| Staff             | 0        | 84,000         | 65,300         | 65,300        | 65,300        | 0        |
| Other             | 0        | 11,500         | 6,200          | 6,200         | 6,200         | 0        |
| <b>Total \$</b>   | <b>0</b> | <b>370,500</b> | <b>346,500</b> | <b>71,500</b> | <b>71,500</b> | <b>0</b> |

*The cash receipts and expenditure estimates on this page represent the most likely fiscal impact. Factors impacting the precision of these estimates, and alternate ranges (if appropriate), are explained in Part II.*

Check applicable boxes and follow corresponding instructions:

- If fiscal impact is greater than \$50,000 per fiscal year in the current biennium or in subsequent biennia, complete entire fiscal note form Parts I-V.
- If fiscal impact is less than \$50,000 per fiscal year in the current biennium or in subsequent biennia, complete this page only (Part I).
- Capital budget impact, complete Part IV.
- Requires new rule making, complete Part V.

|                                    |                       |                  |
|------------------------------------|-----------------------|------------------|
| Legislative Contact: Connor Schiff | Phone: 360-786-7093   | Date: 01/31/2024 |
| Agency Preparation: Nicole Dixon   | Phone: 360-902-1155   | Date: 02/22/2024 |
| Agency Approval: Brian Considine   | Phone: 3604863469     | Date: 02/22/2024 |
| OFM Review: Lisa Borkowski         | Phone: (360) 742-2239 | Date: 02/22/2024 |

## Part II: Narrative Explanation

### II. A - Brief Description Of What The Measure Does That Has Fiscal Impact

*Significant provisions of the bill and any related workload or policy assumptions that have revenue or expenditure impact on the responding agency by section number.*

Section 3 now requires the Department of Natural Resources to be responsible for non-routine maintenance, including engraving additional names to the memorial. The costs for such activities are likely no more than an average of \$1000/year.

This bill indicates the establishment of a fallen firefighter memorial and a fund for the design, construction, and maintenance of a fallen firefighter memorial on the state capitol campus.

DNR will have fiscal impacts being the responsible party for the architecture & engineering, pre-design and construction costs. The creation of the fallen firefighter memorial account is not anticipated to create additional fiscal impacts to DNR.

### II. B - Cash receipts Impact

*Cash receipts impact of the legislation on the responding agency with the cash receipts provisions identified by section number and when appropriate, the detail of the revenue sources. Description of the factual basis of the assumptions and the method by which the cash receipts impact is derived. Explanation of how workload assumptions translate into estimates. Distinguished between one time and ongoing functions.*

### II. C - Expenditures

*Agency expenditures necessary to implement this legislation (or savings resulting from this legislation), with the provisions of the legislation that result in the expenditures (or savings) identified by section number. Description of the factual basis of the assumptions and the method by which the expenditure impact is derived. Explanation of how workload assumptions translate into cost estimates. Distinguished between one time and ongoing functions.*

## Part III: Expenditure Detail

### III. A - Operating Budget Expenditures

NONE

### III. B - Expenditures by Object Or Purpose

NONE

**III. C - Operating FTE Detail:** *FTEs listed by classification and corresponding annual compensation. Totals agree with total FTEs in Part I and Part IIIA.*

NONE

### III. D - Expenditures By Program (optional)

NONE

## Part IV: Capital Budget Impact

### IV. A - Capital Budget Expenditures

| Account         | Account Title                       | Type  | FY 2024 | FY 2025 | 2023-25 | 2025-27 | 2027-29 |
|-----------------|-------------------------------------|-------|---------|---------|---------|---------|---------|
| 057-1           | State Building Construction Account | State | 0       | 370,500 | 370,500 | 418,000 | 71,500  |
| <b>Total \$</b> |                                     |       | 0       | 370,500 | 370,500 | 418,000 | 71,500  |

**IV. B - Expenditures by Object Or Purpose**

|                                      | FY 2024 | FY 2025 | 2023-25 | 2025-27 | 2027-29 |
|--------------------------------------|---------|---------|---------|---------|---------|
| FTE Staff Years                      |         | 0.7     | 0.3     | 0.5     | 0.3     |
| A-Salaries and Wages                 |         | 63,100  | 63,100  | 98,600  | 49,300  |
| B-Employee Benefits                  |         | 20,900  | 20,900  | 32,000  | 16,000  |
| C-Professional Service Contracts     |         |         |         |         |         |
| E-Goods and Other Services           |         | 282,200 | 282,200 | 286,000 | 5,500   |
| G-Travel                             |         | 900     | 900     | 1,400   | 700     |
| J-Capital Outlays                    |         | 3,400   | 3,400   |         |         |
| M-Inter Agency/Fund Transfers        |         |         |         |         |         |
| N-Grants, Benefits & Client Services |         |         |         |         |         |
| P-Debt Service                       |         |         |         |         |         |
| S-Interagency Reimbursements         |         |         |         |         |         |
| T-Intra-Agency Reimbursements        |         |         |         |         |         |
| 9-                                   |         |         |         |         |         |
| <b>Total \$</b>                      | 0       | 370,500 | 370,500 | 418,000 | 71,500  |

**IV. C - Capital Budget Breakout**

*Acquisition and construction costs not reflected elsewhere on the fiscal note and description of potential financing methods.*

| Construction Estimate | FY 2024 | FY 2025 | 2023-25 | 2025-27 | 2027-29 |
|-----------------------|---------|---------|---------|---------|---------|
| Pre-design/Design     |         | 275,000 | 275,000 | 275,000 |         |
| Construction          |         |         |         |         |         |
| Grants/Loans          |         |         |         |         |         |
| Staff                 |         | 84,000  | 84,000  | 130,600 | 65,300  |
| Other                 |         | 11,500  | 11,500  | 12,400  | 6,200   |
| <b>Total \$</b>       |         | 370,500 | 370,500 | 418,000 | 71,500  |

**IV. D - Capital FTE Detail:** *FTEs listed by classification and corresponding annual compensation. Totals agree with total FTEs in Part IVB.*

| Job Classification                 | Salary | FY 2024 | FY 2025 | 2023-25 | 2025-27 | 2027-29 |
|------------------------------------|--------|---------|---------|---------|---------|---------|
| Construction Project Coordinator 3 | 98,592 |         | 0.5     | 0.3     | 0.5     | 0.3     |
| Natural Resource Scientist 3       | 82,896 |         | 0.2     | 0.1     |         |         |
| <b>Total FTEs</b>                  |        |         | 0.7     | 0.3     | 0.5     | 0.3     |

Section 2, (1) and (2) generate the whole of costs tied to this project in that they establish a project to be constructed and establish the authorities for design review and execution.

FTE Costs:

FY25: \$84,000

FY26 through FY28: \$65,300

Construction Project Coordinator 3 (.5 FTE) is necessary through pre-design, design, and construction phases of project to manage all phases through project close out.

Archaeologist (Natural Resource Scientist 3) is necessary (2 Staff Months) during the pre-design phase to meet requirements associated with EO 21-02 for the selected site

Assumed base project cost for memorial: \$5 Million

A&E costs for pre-design and design at 11% of base cost: \$550,000 (\$275,000 in FY 25 and FY 26).

Section 3(2)(a): Year over year operating costs to DNR and or charitable organizations is approximately \$1000 per year to add names to the memorial. DNR assumes this cost will be funded by the account created in this bill.

Total Cost:

2023-25 \$370,500  
2025-27\* \$418,000  
2027-29 \$71,500

\*Additional funding request will be needed once actual constructions costs are developed.

Goods and services and travel are calculated on actual program averages per person.

## **Part V: New Rule Making Required**

*Provisions of the bill that require the agency to adopt new administrative rules or repeal/revise existing rules.*

This bill provides the Department of Natural Resources authority for rulemaking in Section 3 (3). Cost and extent of any rulemaking are indeterminate at the time of this review.



Washington State  
**DEPARTMENT OF  
ENTERPRISE SERVICES**

## **Capitol Campus Design Advisory Committee**

*Marc Daily (2024 Chair, Urban Planner), Kristin Glandon (2024 Vice Chair, Landscape Architect),  
Secretary of State Steve Hobbs, Senator Sam Hunt, Senator Phil Fortunato, Representative Beth Doglio,  
Representative Joel McEntire, Alex Rolluda (Architect-1), and Jordan Kiel (Architect- 2)*

**AUGUST 15, 2024**

(REMOTE ACCESS MEETING)

**9 – Building Naming process review**

**INFORMATIONAL ITEM**





## Capitol Campus Advisory Committee

August 15, 2024

### **9- Building Naming Process Review**

Purpose: **Informational**

Sponsor(s): Washington State Department of Enterprise Services  
Presenters: Linda Kent, Chief External Affairs Officer, [Linda.Kent@des.wa.gov](mailto:Linda.Kent@des.wa.gov),  
(360)972-6413

#### **Description:**

The State Capitol Committee (SCC) at its XX regular meeting approved a process to support informing recommendations to the Legislature for naming or renaming buildings on the State Capitol Grounds. [RCW 43.34.090](#) states that the Legislature shall approve the names for new or existing buildings on State Capitol Grounds and lays out criteria for when an existing building may be eligible for renaming. In addition, the statute also requires a recommendation be made by the State Capitol Committee (SCC) with the advice of the Capitol Campus Design Advisory Committee (CCDAC).

This process is used to support the SCC and CCDAC in making recommendations after proposals are received. Two proposals to name or rename buildings were received in 2023: The proposal to name the Irv Newhouse Building as the Irving R. Newhouse Building and the proposal to name the NRB Building as the Jennifer Belcher Building. Both received recommendations from the SCC to the Legislature, which still stand. Neither recommendation made it through the Legislative process.

#### **Next Steps:**

- CCDAC will hear a high level review of the CCDAC / SCC process to support informed recommendations.
- CCDAC will discuss the process and may recommended changes to it. Any recommendations would go before the SCC at its next regularly scheduled meeting.

#### **Requested Action:**

##### **INFORMATIONAL ITEM**

This is a discussion item. No action by CCDAC is required.

#### **List of Attachments:**

Attachment: <<ADD Y- Agenda Title Item Name>> Presentation, <<ADD Presentation Date>>  
<<OR>> No Attachments.



# SCC / CCDAC Building Naming Process

LINDA KENT  
CHIEF EXTERNAL AFFAIRS OFFICER

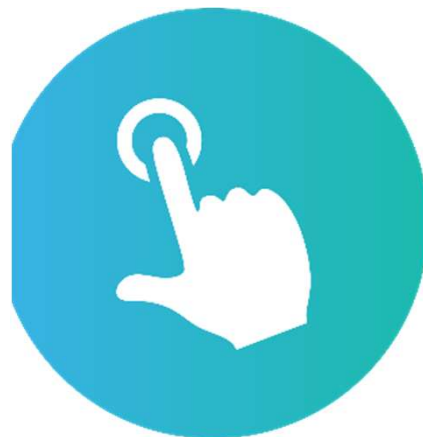
*August 2024*

1

## SCC / CCDAC PROCESS

---

Purpose: Support SCC/CCDAC to make a recommendation to the Legislature.



2

## BACKGROUND

---

- RCW 43.34.090 states the Legislature may name new buildings and also sets out criteria for when an existing building may be eligible for renaming.
- Calls for recommendation from SCC.



3

## PAST CCDAC / SCC RECOMMENDATIONS

---

Two building naming proposals moved through the process in 2023:

- Name the Irv Newhouse Building as the Irving R. Newhouse Building
- Name the NRB Building as the Jennifer Belcher Building



4

# THANK YOU



[linda.kent@des.wa.gov](mailto:linda.kent@des.wa.gov)



360-972-6413



[des.wa.gov](http://des.wa.gov)



Washington State  
**DEPARTMENT OF  
ENTERPRISE SERVICES**

## **Capitol Campus Design Advisory Committee**

*Marc Daily (2024 Chair, Urban Planner), Kristin Glandon (2024 Vice Chair, Landscape Architect), Secretary of State Steve Hobbs, Senator Sam Hunt, Senator Phil Fortunato, Representative Beth Doglio, Representative Joel McEntire, Alex Rolluda (Architect-1), and Jordan Kiel (Architect-2)*

**AUGUST 15, 2024**

(REMOTE ACCESS MEETING)

### **10- Future Announcements and Adjournment of Meeting**

The Next Regularly Scheduled Meeting Calendar and up-to-date information may be found on the State Capitol Committee (SCC) and Capitol Campus Design Advisory Committee (CCDAC) websites.

These meetings may be held via remote access or “in-person.”

Future agendas, past minutes and meeting materials will be posted to these websites as they become available.

**THANK YOU FOR PARTICPATING IN TODAYS MEETING!**