

# The Statewide Roster

CPARB Construction Cost Escalation Committee Review



# Why a Statewide Roster

- Saves money and time in the advertising and awarding process of contracting
  - Centralization makes it easier for businesses to participate
  - Takes advantage of economies of scale to perform the administrative functions of the program

# Price changes for construction inputs as of April 2025

producer price indexes (PPIs), 1 - & 12-mo. change (not seasonally adjusted)

**April 2025 change from:**

**Mar. 2025   Apr. 2024   Feb. 2020**  
**(1 month)   (12 months)   (62 months)**

## **Overall input costs were flat in 2024 but have outpaced the CPI since 2020**

PPI for inputs to new nonresidential construction

0.0%   1.3%   40%

Consumer price index (CPI)

0.3%   2.3%   24%

## **...and some input prices remain volatile**

Plastics pipe

1.2%   -7.3%   65%

Concrete pipe

0.1%   7.9%   65%

Steel pipe and tube

6.3%   4.1%   45%

*Copper and copper alloy pipe and tube\**

-\*   15%\*   116%\*

\*= Data for this material is only available through March 2025, unlike the others which include April 2025. As a result, the 1-month % change is not available, and both the 12-month change and change since Feb. 2020 are calculated relative to March 2025

# Current threshold adjusted by indexes

- 2019 value - \$350,000
- Producer price index (40% since Feb 2020) - \$490,000
- Construction Cost Index (40.7% since Jan 2020) - \$498,500

# Small Works: What's going well and what's not?

## **Making progress**

- Growth in registered agencies and businesses
- Collecting new public spend information

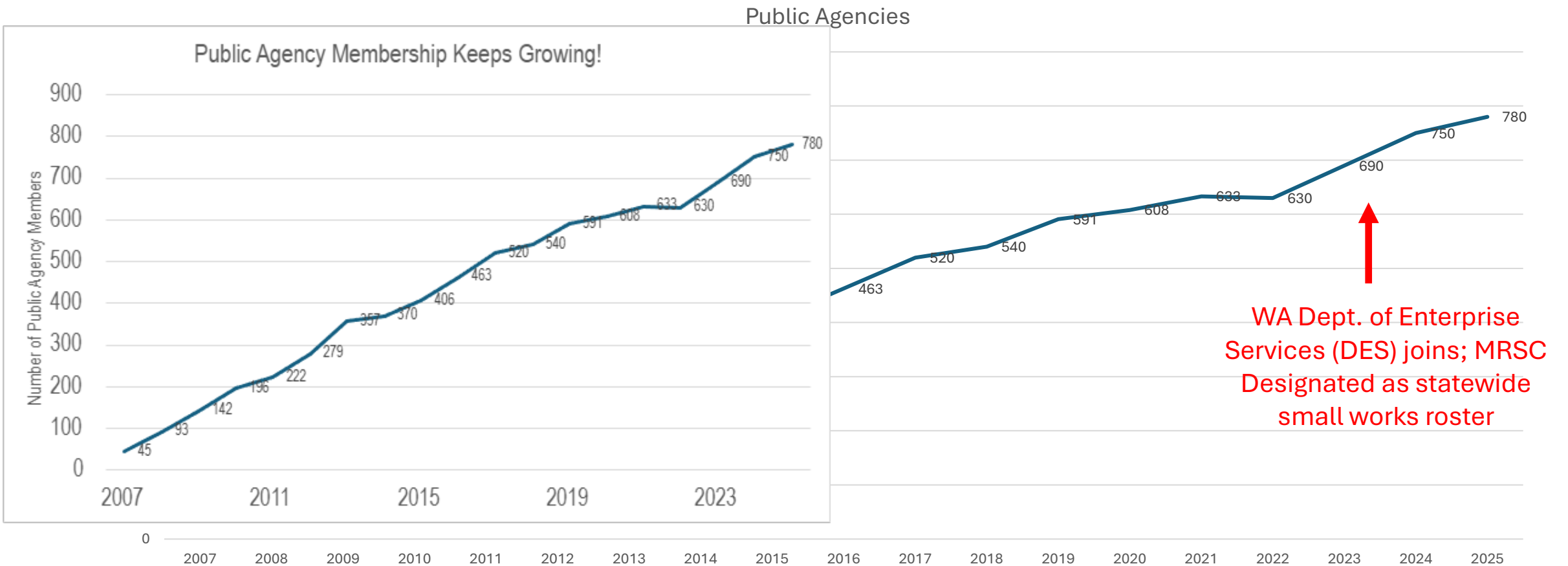
## **Needs continued work**

- Amount of agencies documenting projects
- Usage of Direct Contracting
- Certified business utilization (handful of firms get large volumes but not necessarily increasing number of certified firms)

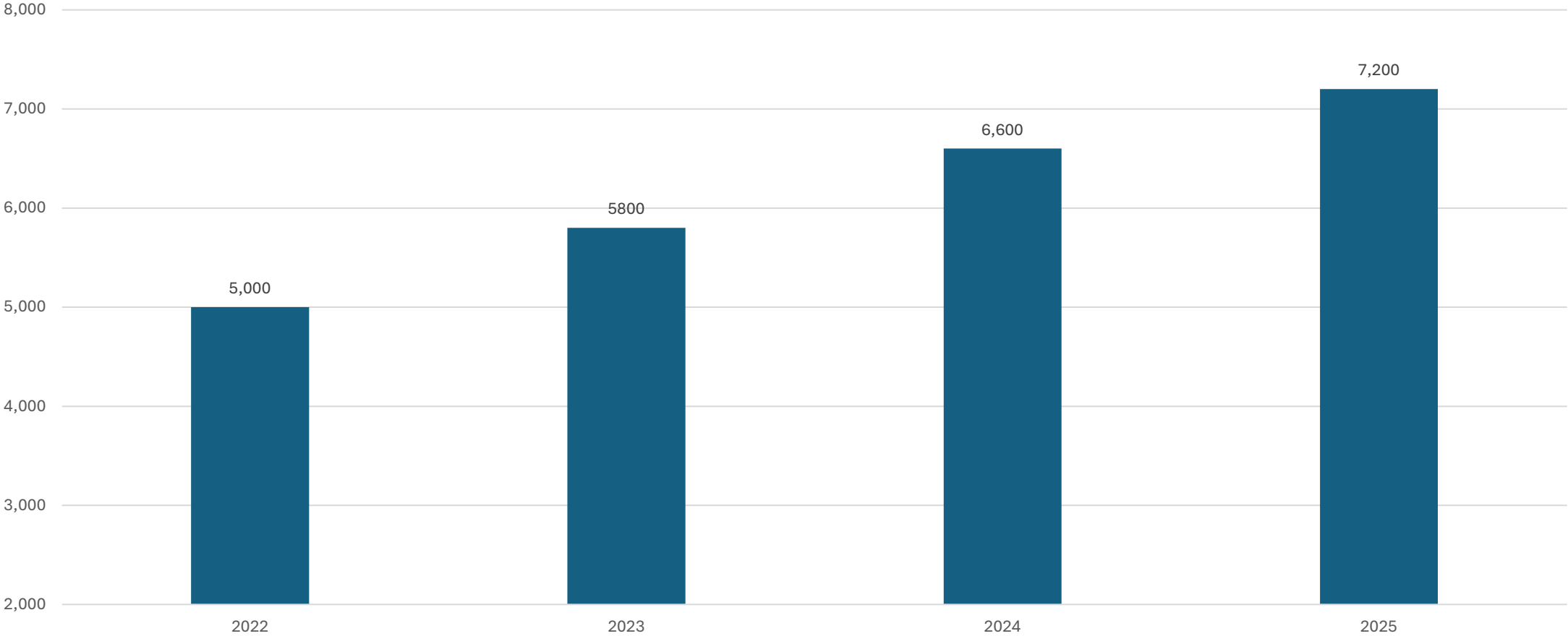
# Cost range of projects 2022-June 2025

Project Cost Range	Count of Projects	% of Projects	Sum of Contract Total
\$0.01-\$50,000	39,808	89.02%	275,465,770
\$50,000-\$100,000	2,560	5.66%	182,063,822
\$100,000-\$150,000	961	2.12%	119,400,013
\$150,000-\$200,000	576	1.27%	100,362,325
\$200,000-\$250,000	387	0.85%	86,990,671
\$250,000-\$300,000	291	0.64%	80,570,020
\$300,000-\$350,000	192	0.43%	63,010,006

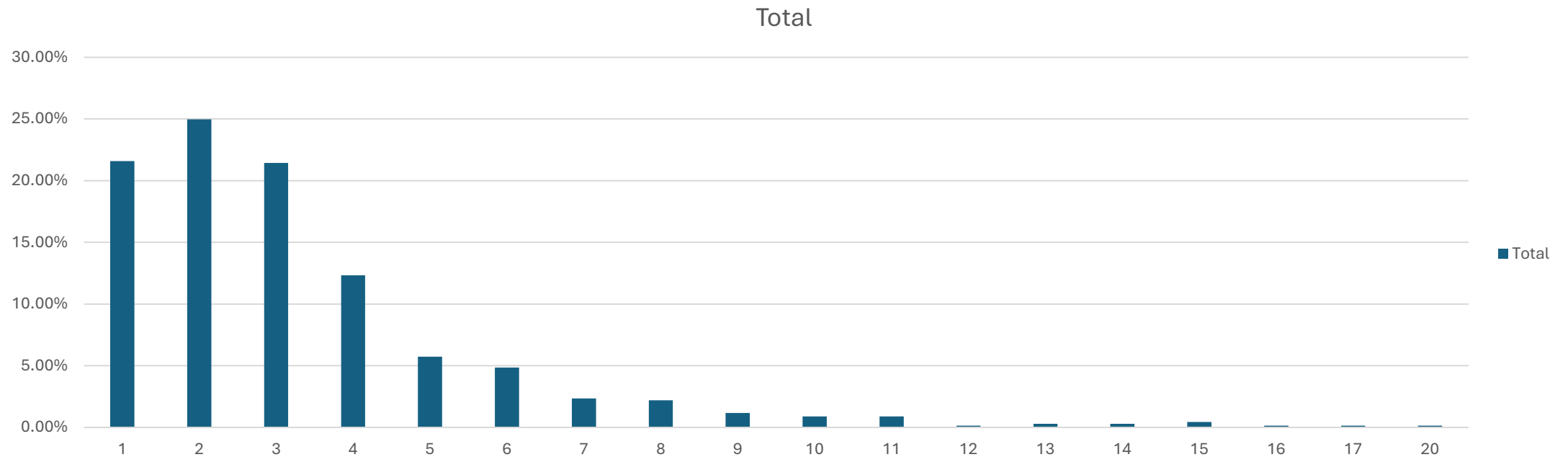
# Statewide Roster Public Agencies



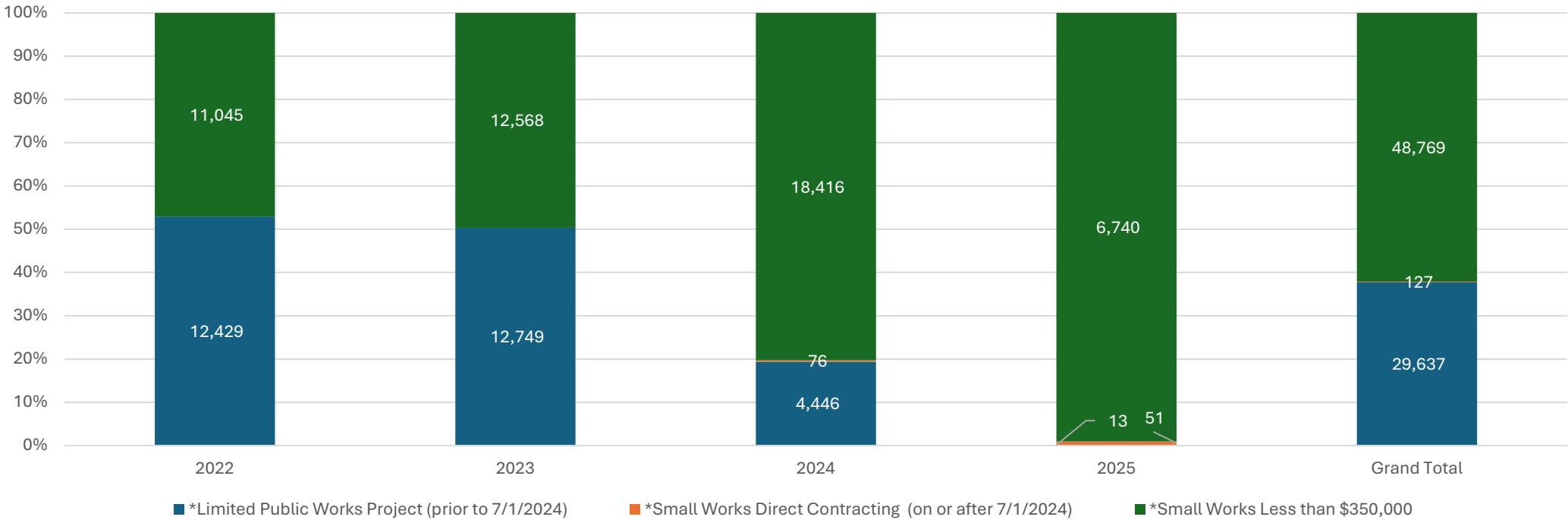
# Total Rosters Businesses



# Amount of bidders for Small Works Projects



# Small Public Works Contracting Utilization



# Certified Utilization for Small Works

