



Washington State
DEPARTMENT OF
ENTERPRISE SERVICES

Accessibility of State Facilities

Michele M. Hill, AIA, Project Manager
Engineering & Architectural Services

NOVEMBER 2025

AGENDA

What we will cover today:

- Why do we pay attention to accessibility?
- How is accessibility regulated?
- What barriers are common and why do they happen?
- How can the State Facilities Accessibility Advisory Committee (SFAAC) help?

BUT FIRST, A NOTE ON LANGUAGE

Instead of:

- Handicap
- Differently able, special needs
- Wheelchair-bound
- ADA

Try saying:

- Disability
- Person with disability, disabled
- Wheelchair user
- Accessible, universal design

WHY ACCESSIBILITY?

WHY DO WE CARE ABOUT ACCESSIBILITY?



Civil rights law

Accessibility of spaces, services, and programs.

Non-discrimination.



Building code*

Some (but not all) physical accessibility requirements are incorporated into codes.

* Can be a grey area for Authorities Having Jurisdiction (AHJs) to enforce.



Inclusivity

Equitable access experience for all users.

Ensure everyone can “be in the room.”

WHO NEEDS ACCESSIBLE SPACES?

Accessibility is for:

- People with permanent disabilities.
- People with temporary disabilities (sprained ankle, broken arm).
- People with sensory disabilities (hearing or vision impairments).
- People who are neurodivergent (autistic, ADHD, PTSD).
- Everyone—including, maybe one day, you!

HOW IS ACCESSIBILITY REGULATED?

ACCESSIBILITY REGULATIONS

Patchwork of civil laws:

- Americans with Disabilities Act
- Rehabilitation Act
- Architectural Barriers Act
- Fair Housing Act
- Laws regulate access to physical space, employment, and services

ACCESSIBILITY REGULATIONS

Patchwork of design regulations:

- ADA Standards for accessible design (2010 "ADA")
- Washington State Building Code (2021 International Building Code)
- Accessible and usable buildings and facilities (2017 ICC/ANSI A117.1)
- Design standards regulate physical features of the built environment
- Universal design: Best practices, not regulated or required

WHAT BARRIERS ARE COMMON?

CARD READERS

Barrier: Access card reader and/or door operator are located across the path of travel

Solutions:

- Plan for locations during design
- Don't leave it up to the contractor
- Educate the client agency
(today is part of that education!)



Photo courtesy of Mandy McCulley

RECEPTION DESKS

Barrier: Desk height for standing persons only

Solutions:

- Include in design
- Educate the client agency
- Don't leave it up to the furniture vendor



Photo by Michele Hill

FURNITURE LAYOUTS

Barrier: Not enough space for mobility aids in seating areas

Solutions:

- Plan for locations during design
- Provide visual cues
- Educate the client agency
- Don't leave it up to the furniture vendor



Photo by Michele Hill

OCCUPANT FF&E

Barrier: Furnishings, fixtures, and equipment provided and installed by the building used in an inaccessible manner

Solutions:

- Plan for locations during design
- Provide visual cues
- Educate the client agency



Photo courtesy of Chris Gizzi

TOILET ACCESSORIES

Barrier: Toilet accessories are not installed within an accessible reach range or become barriers when installed

Solutions:

- Plan for locations during design
- Don't leave it up to the contractor
- Educate the client agency

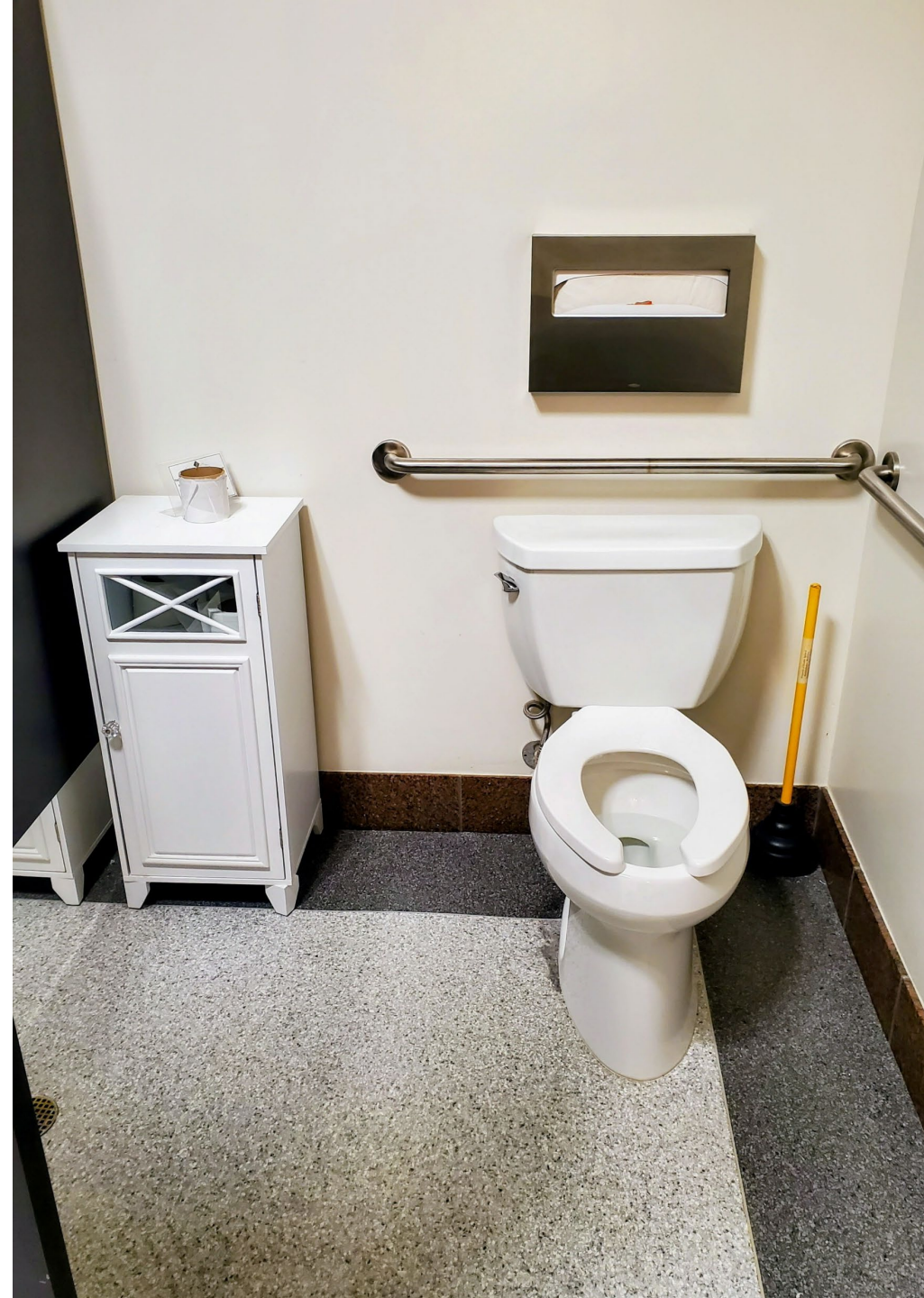


Photo by Michele Hill

DRINKING FOUNTAINS

Barrier: Only one drinking fountain provided (for seated users)

Solutions:

- Plan for locations during design
- Educate the client agency



Photo by Michele Hill

CASEWORK AT SINKS

Barrier: Potential for under-sink clearance to be filled with stored items

Solutions:

- Don't include doors in the design
- Educate the client agency



EV CAR CHARGERS

Barrier: Electric vehicle chargers located at non-accessible stalls

Solutions:

- Plan for locations during design
- Consult with an architect
- Educate the client agency

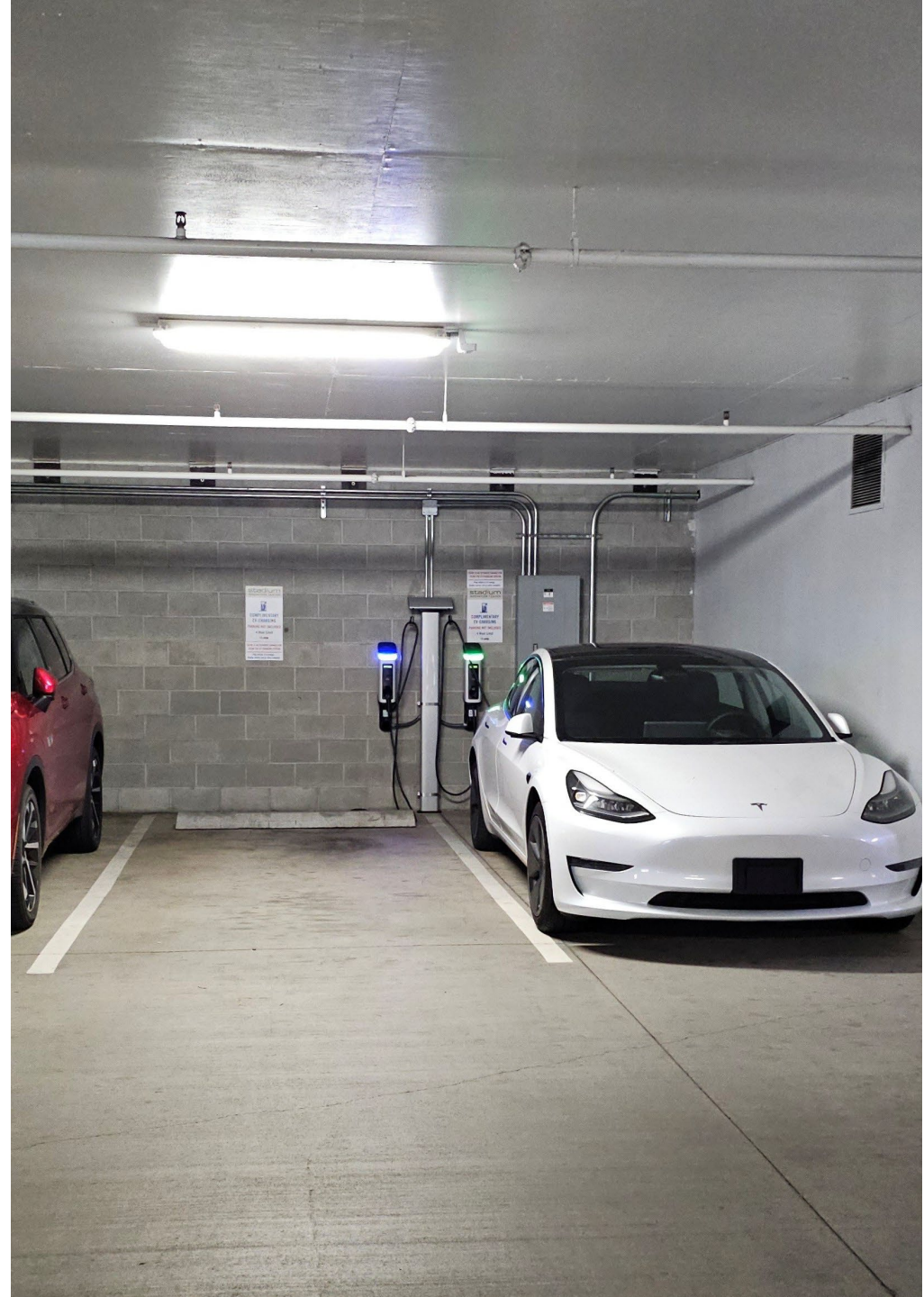


Photo courtesy of Adam Hill

OTHER COMMON BARRIERS

Other elements that are frequently overlooked:

- Path of travel from accessible parking and transit stop to entrance
- Two-way audio/text communication in elevators

HOW CAN SFAAC HELP?

WHAT IS SFAAC?

The State Facilities Accessibility Advisory Committee:

- Established under Executive Order 96-04
- Members include DES E&AS project managers, SBCTC, SBCC, persons with disabilities
- Reviews all projects \$5M+
- Also reviews smaller projects when requested

HOW CAN SFAAC HELP?

The State Facilities Accessibility Advisory Committee:

- Provides *recommendations* regarding accessibility and universal design principles.
- Acts as a resource for DES project managers, client agencies, and consultants.
- Recommends that client agency representatives attend review meetings, along with DES project manager and architect.

THANK YOU



michele.hill@des.wa.gov



360-490-5983



DES.wa.gov