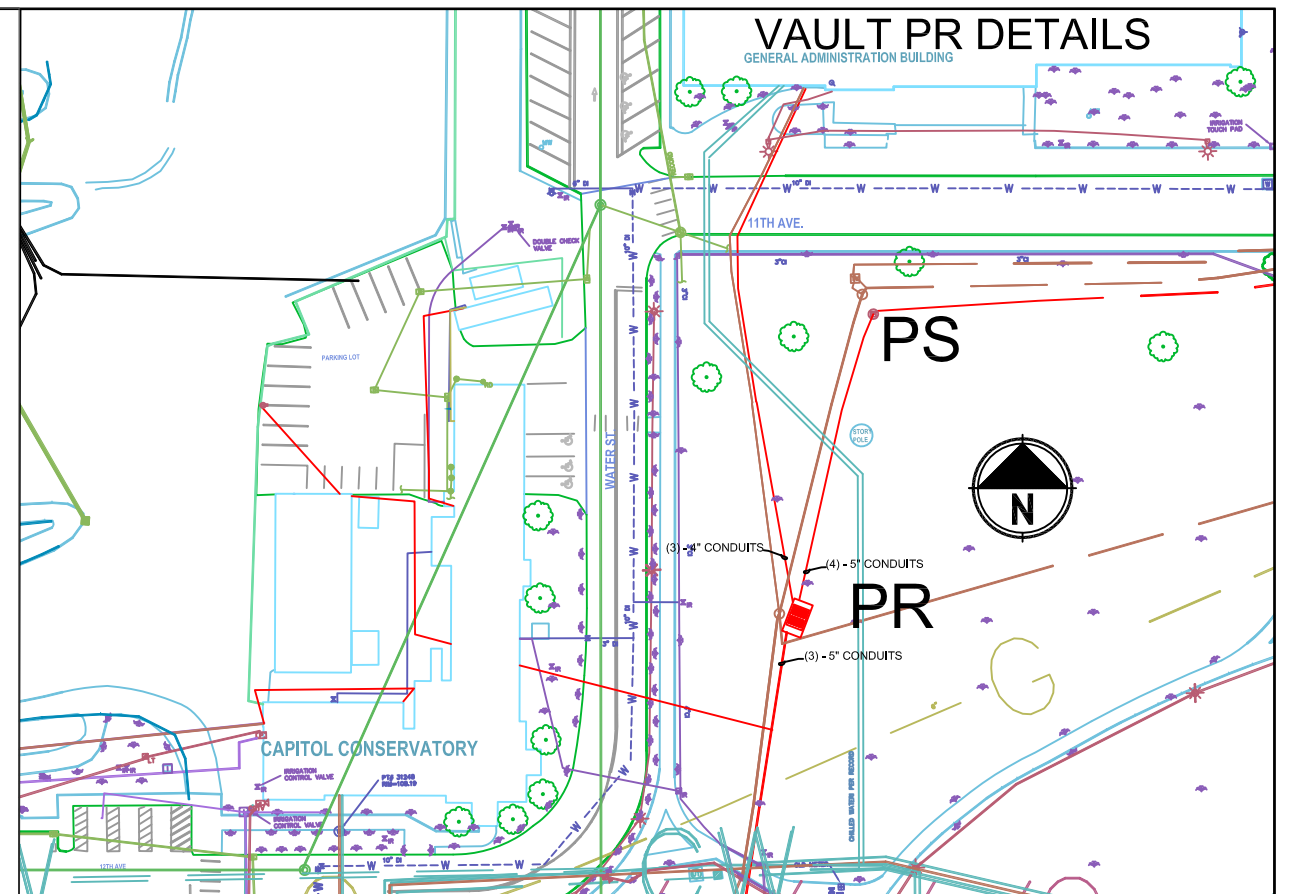
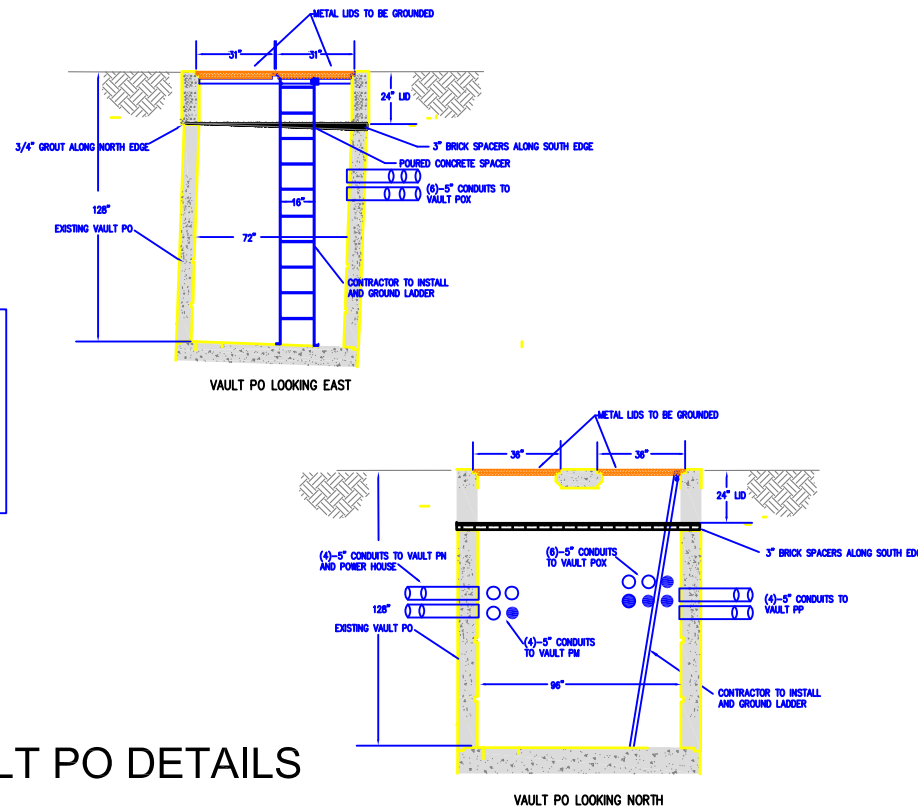
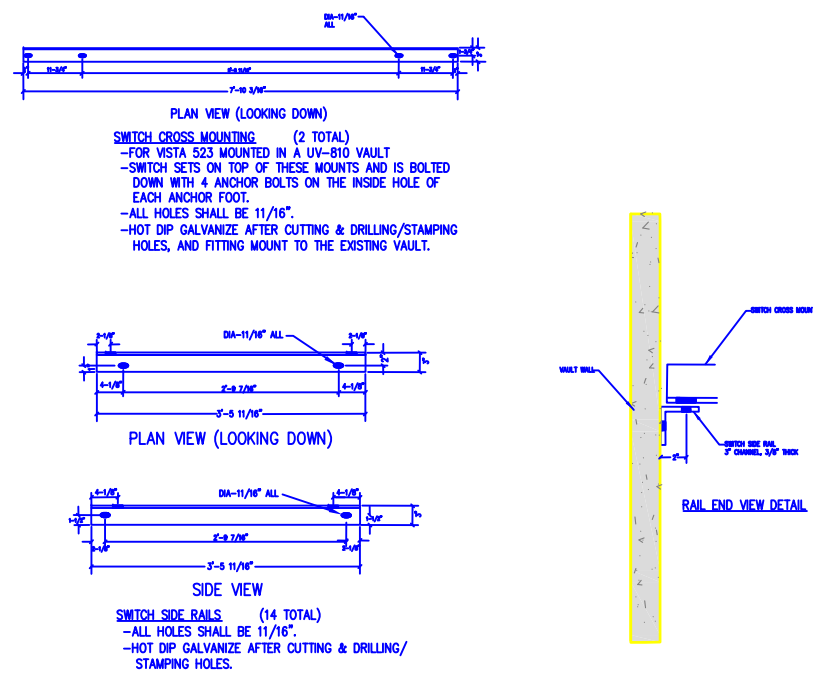


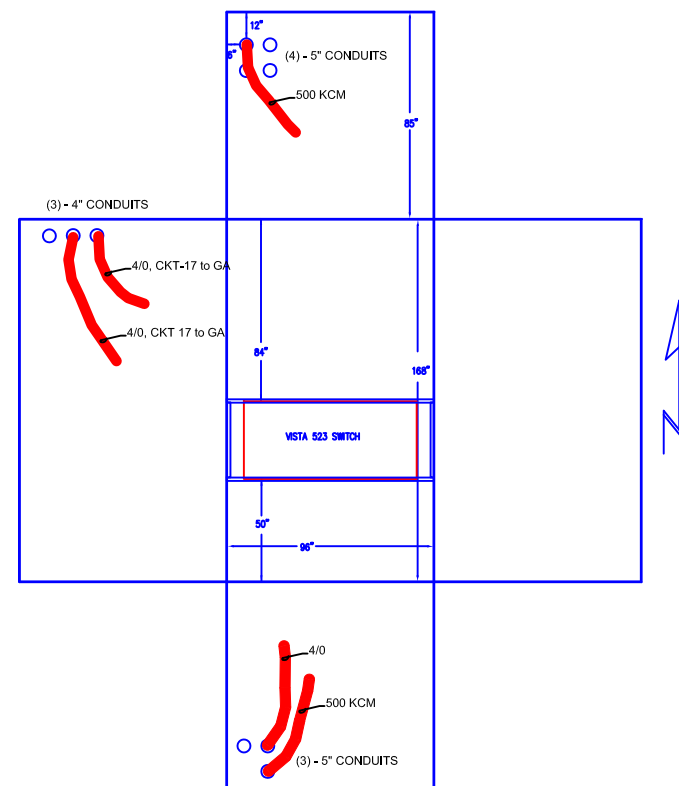
VAULT PO DETAILS



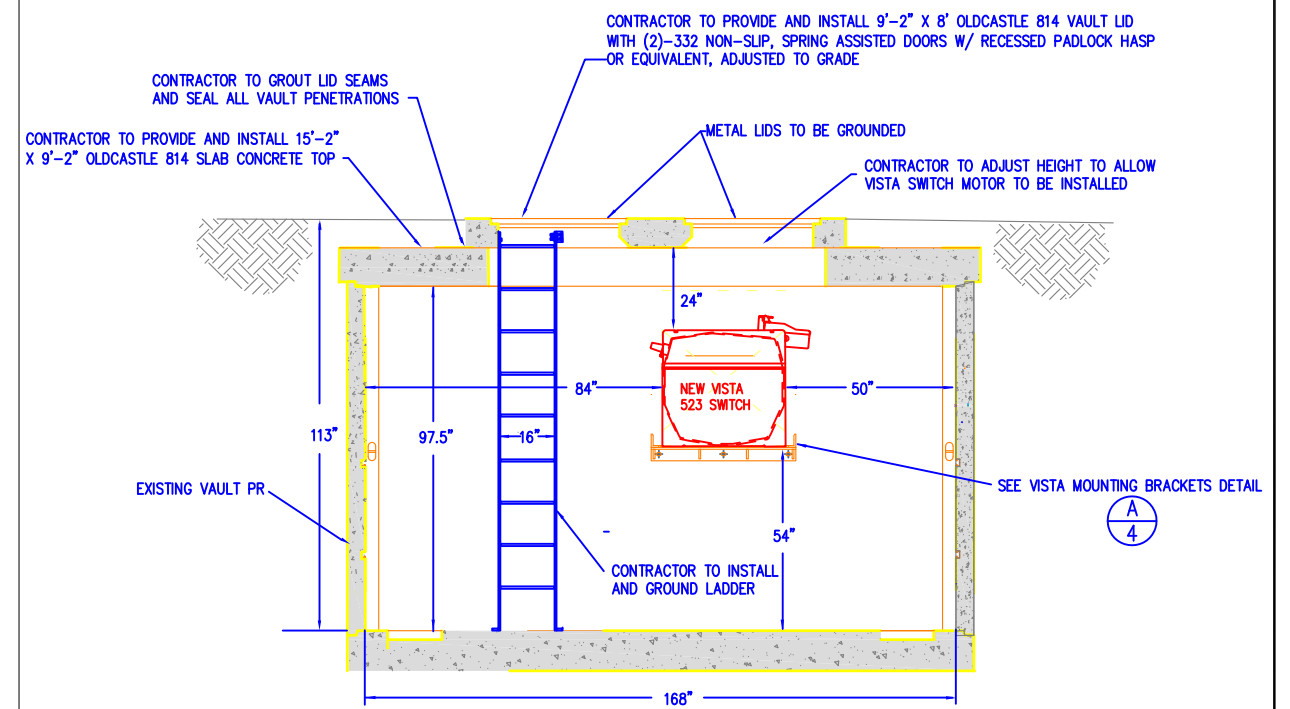
VISTA 523 IN EXISTING VAULT MOUNTING BRACKETS DETAIL (A)



VAULT PR DETAILS



VAULT PR DETAILS



CALL BEFORE YOU DIG:
 The Contractor shall be fully responsible for the location and protection of all existing utilities. The Contractor shall verify all utility locations prior to construction by calling the underground locate line at 811 a minimum of 48 hours prior to any excavation. Since the utilities are located on State property, the Contractor will be required to coordinate locating with a private locating service and the State of Washington, except the irrigation water lines will be identified by DES Staff. Locating costs are to be part of the Contractor's base bid.

Note: Underground utilities are taken from other drawings and show both current and potential future utilities and are the best DES understands them to be.

All locations are approximate.

		DUTTLE & ASSOCIATES, INC. Engineers and Consultants 7515 WEST DESCHUTES AVENUE KENNEWICK, WA 98536 (509) 735-5350		STATE OF WASHINGTON DEPARTMENT OF ENTERPRISE SERVICES EMERGENCY WEST CAMPUS MEDIUM VOLTAGE	MISC VAULT DETAILS
2	Construction Record Drawing	1-29-2013		DWN BY: JDJ	DSN BY: RKS
1	For Construction	9-6-2012		CHK BY: RKS	
REV	REVISION DESCRIPTION	DATE		DATE: 1/4/2012	SHEET: 4 of 6
				DWG: E02	1