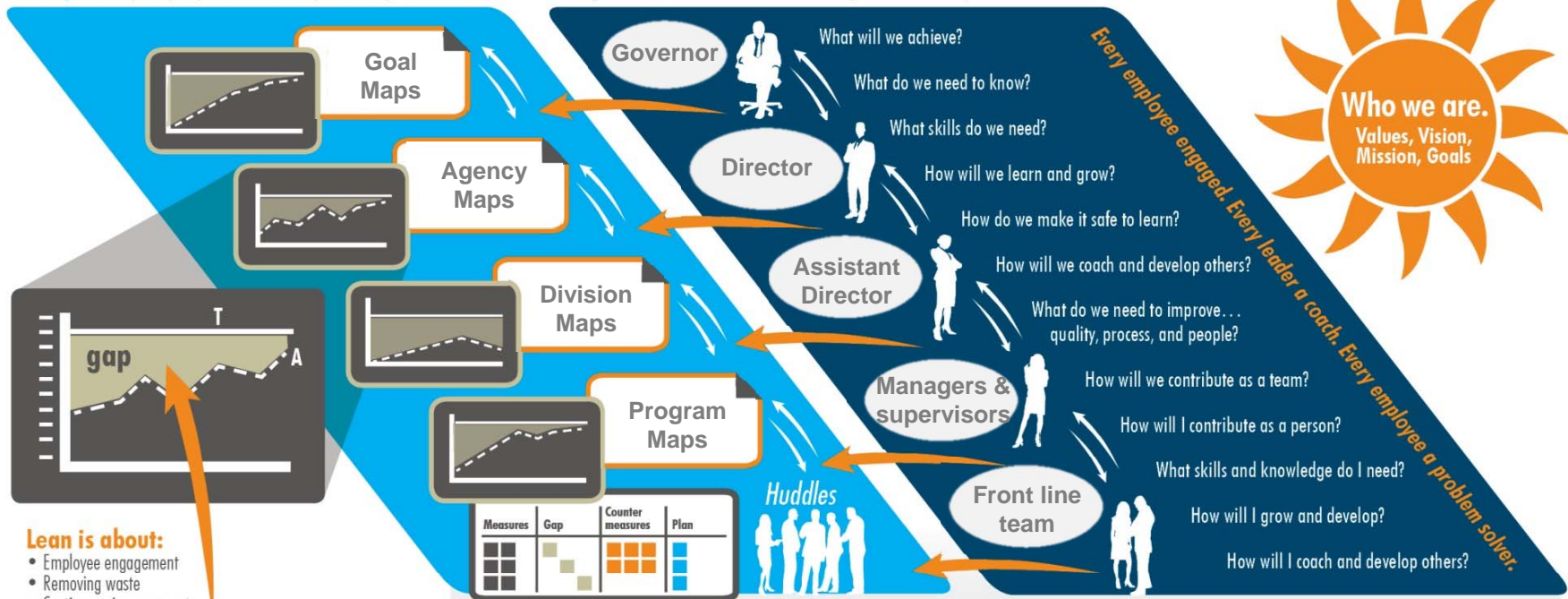


Lean Management System: Alignment & continuous improvement.

Clarity: Policy deployment & daily management

Competence: Culture of learning and development



Lean is about:

- Employee engagement
- Removing waste
- Continuous improvement

Continuous improvement is about:

- Closing the **gap** between Actual (A) & Target (T)
- Finding the root of the problem
- Trying experiments (counter measures) to close the **gap**
- Verifying outcomes
- Sustaining the results

Graphic design: WA ESD | Design concept: Ariana Wood, Senior Lean Consultant, Lean Transformation Services, WA DES



 www.des.wa.gov |
  Lean@des.wa.gov |
  (360) 407-7925

1500 Jefferson Street SE, Olympia, WA 98501