

design groups, inc. p.s.
 architecture
 education facilities group
 justice facilities group
 security design group
 828-7th Avenue SE
 Olympia, WA 98501
 360.352.8883

KMB Project # D1817

**PARKING LOT RE-STRIPING
 NATURAL RESOURCES BUILDING
 1111 WASHINGTON STREET SE
 OLYMPIA, WA 98501**

ORIGINAL SHEET SIZE = 24 x 36
 HALF SIZE REDUCTIONS = 11 x 17

REVISIONS:

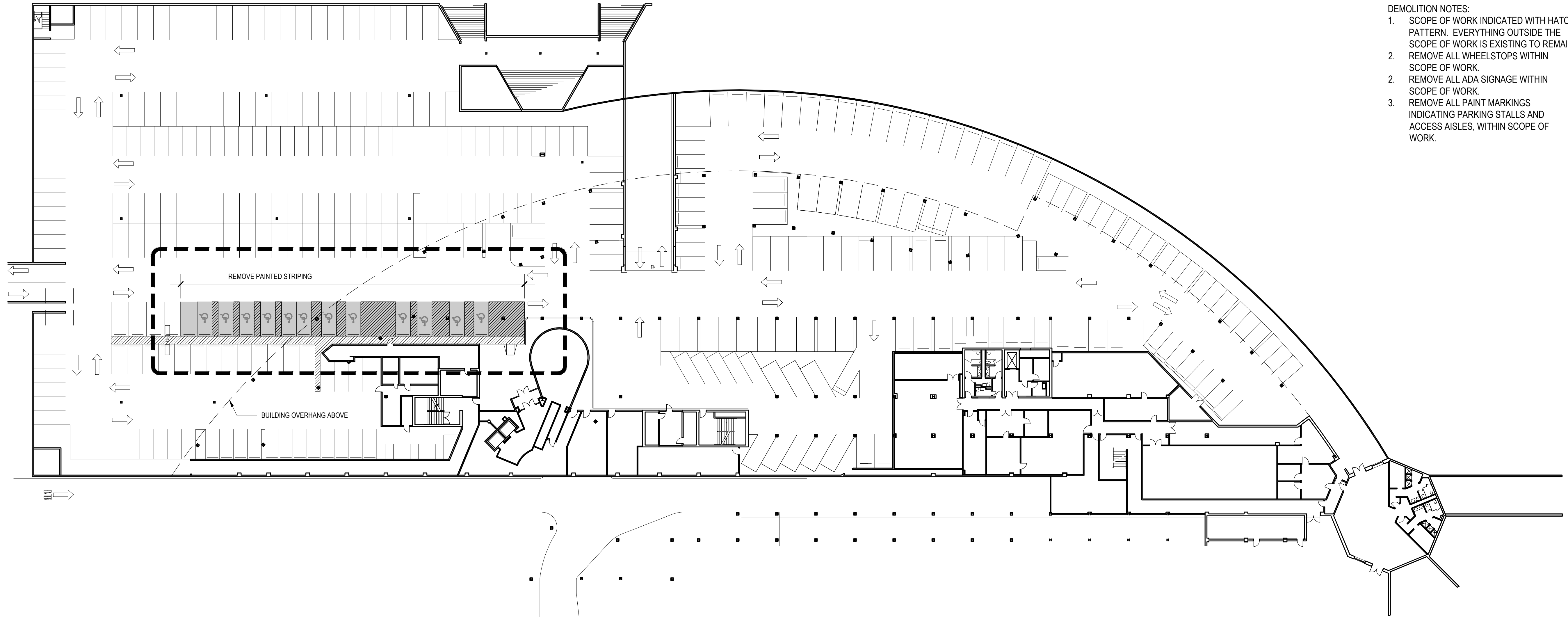
DATE:
 04-20-2018

SCHEMATIC DESIGN

SHEET NO.

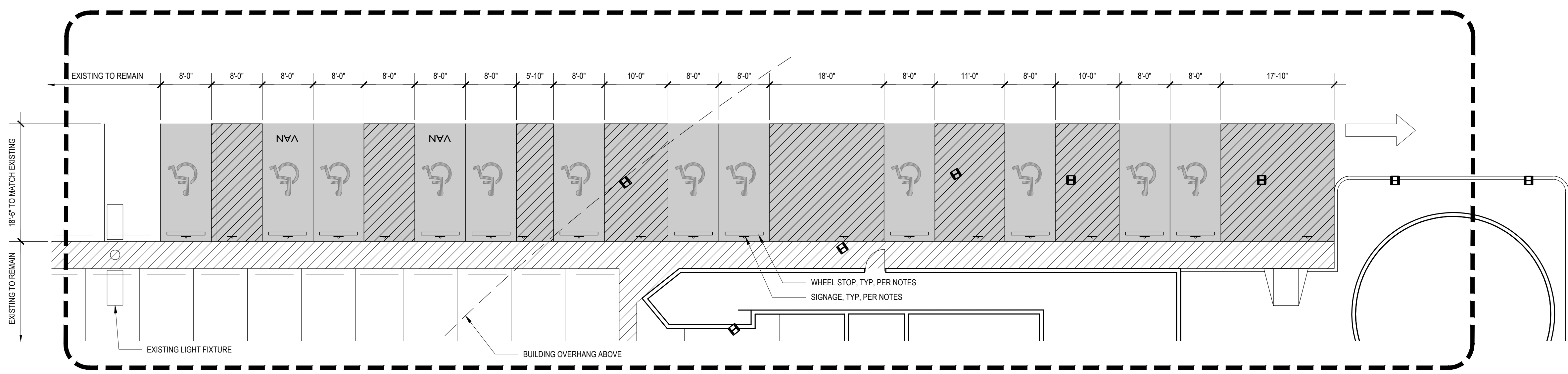
A1.1

- DEMOLITION NOTES:
1. SCOPE OF WORK INDICATED WITH HATCH PATTERN. EVERYTHING OUTSIDE THE SCOPE OF WORK IS EXISTING TO REMAIN.
 2. REMOVE ALL WHEELSTOPS WITHIN SCOPE OF WORK.
 2. REMOVE ALL ADA SIGNAGE WITHIN SCOPE OF WORK.
 3. REMOVE ALL PAINT MARKINGS INDICATING PARKING STALLS AND ACCESS AISLES, WITHIN SCOPE OF WORK.



1 PROJECT NORTH
EXISTING - DEMOLITION PLAN
 SCALE: 1" = 30'-0"

- NOTES:
1. SCOPE OF WORK INDICATED WITH HATCH PATTERN. EVERYTHING OUTSIDE THE SCOPE OF WORK IS EXISTING TO REMAIN.
 2. PAINT FOR PAVEMENT MARKINGS SHALL MEET THE REQUIREMENTS OF SECTION 8-22 AND 9-34 OF THE WSDOT-APWA STANDARD SPECIFICATIONS.
 3. PAINT MUST BE APPROVED FOR PAINTING OVER THE COATING USED ON THE SURFACE THROUGHOUT THE SCOPE OF WORK.
 4. REINSTALL WHEEL STOPS AS SHOWN.
 5. IDENTIFY (2) VAN PARKING SPACES.
 6. PROVIDE SIGNAGE IDENTIFYING ACCESSIBLE PARKING SPACES AND ACCESS STALLS PER WAC 51-50-1101.2.9.



2 PROJECT NORTH
NEW STRIPING PLAN
 SCALE: 1" = 10'-0"