

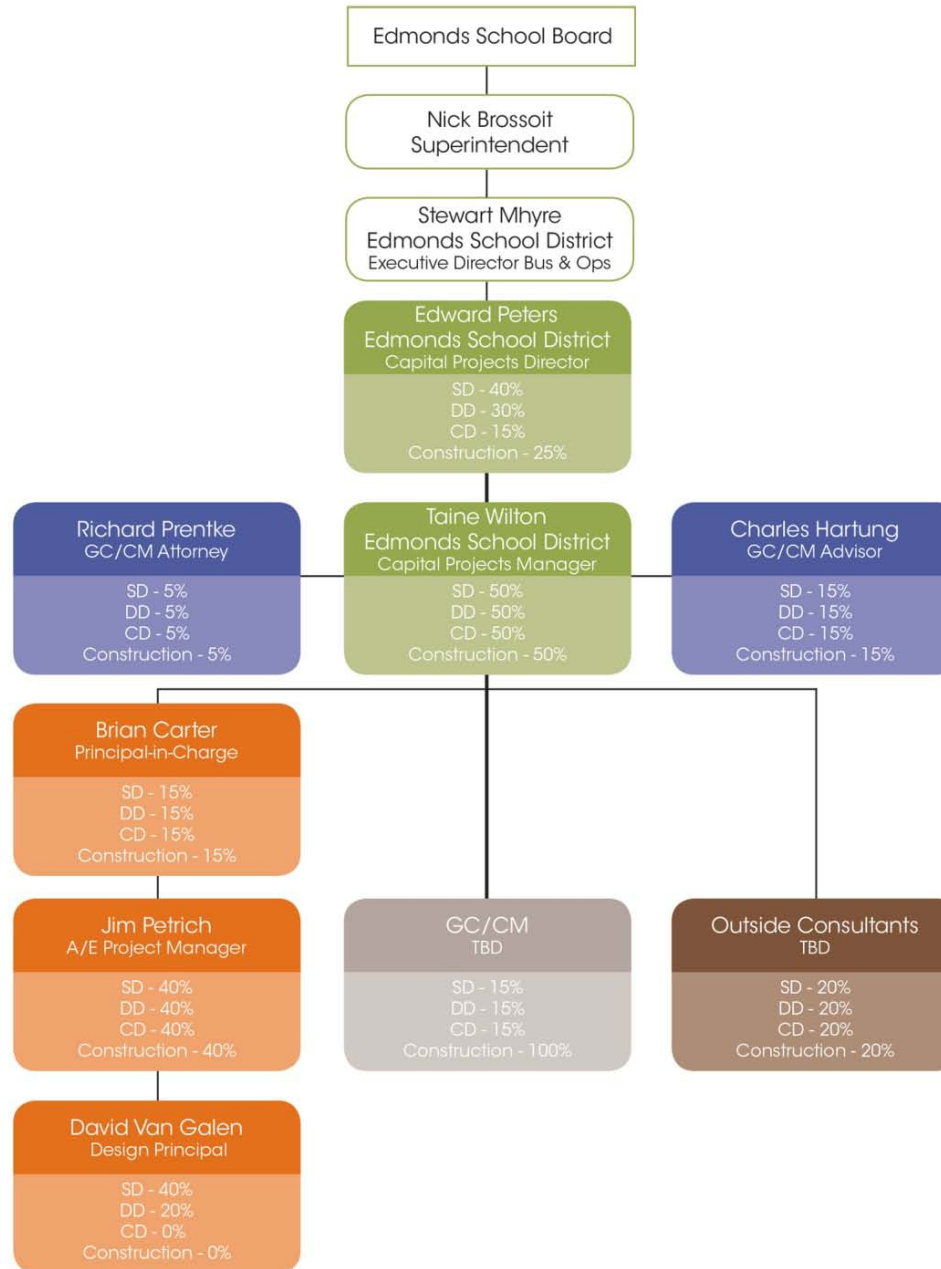


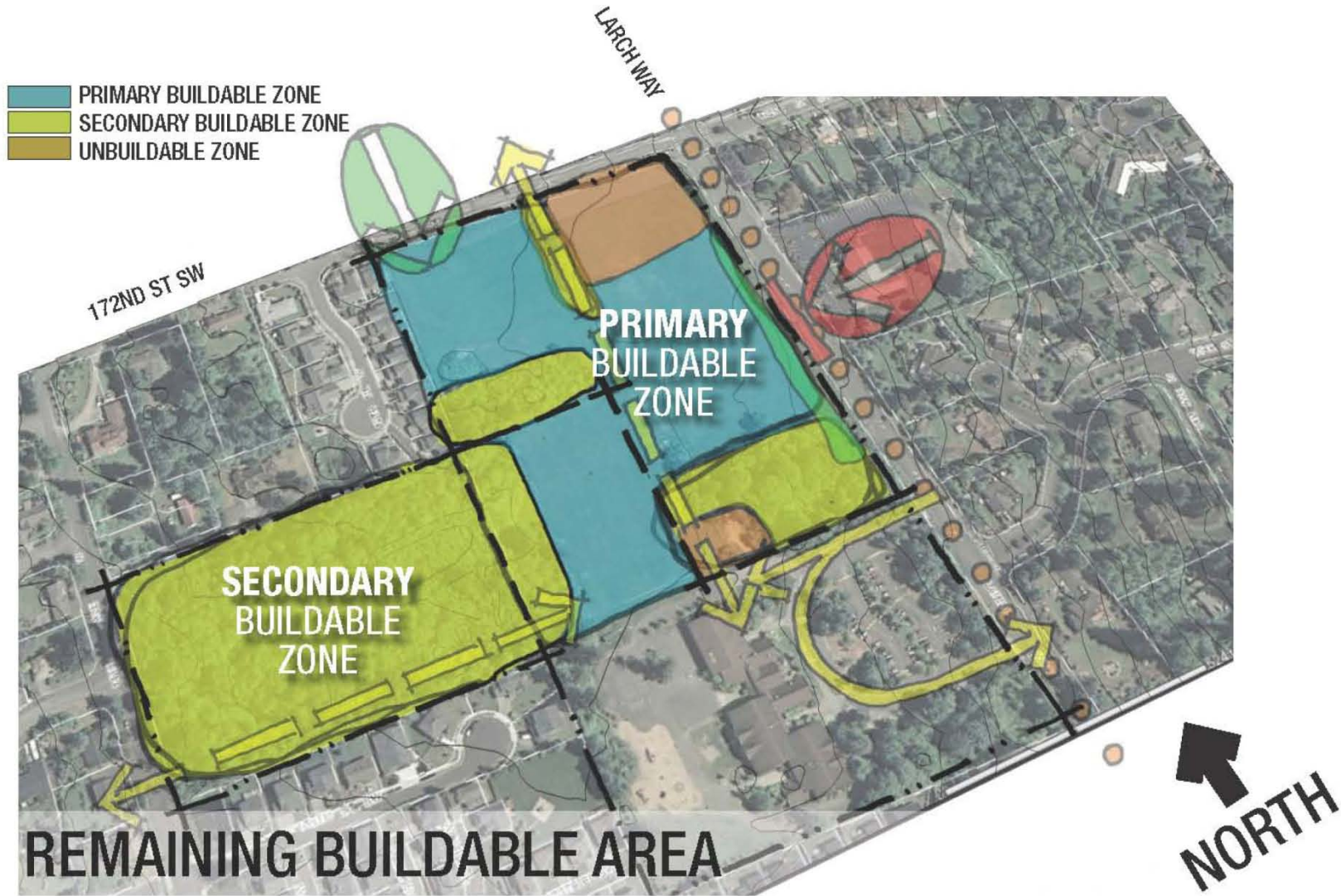
integrus
ARCHITECTURE

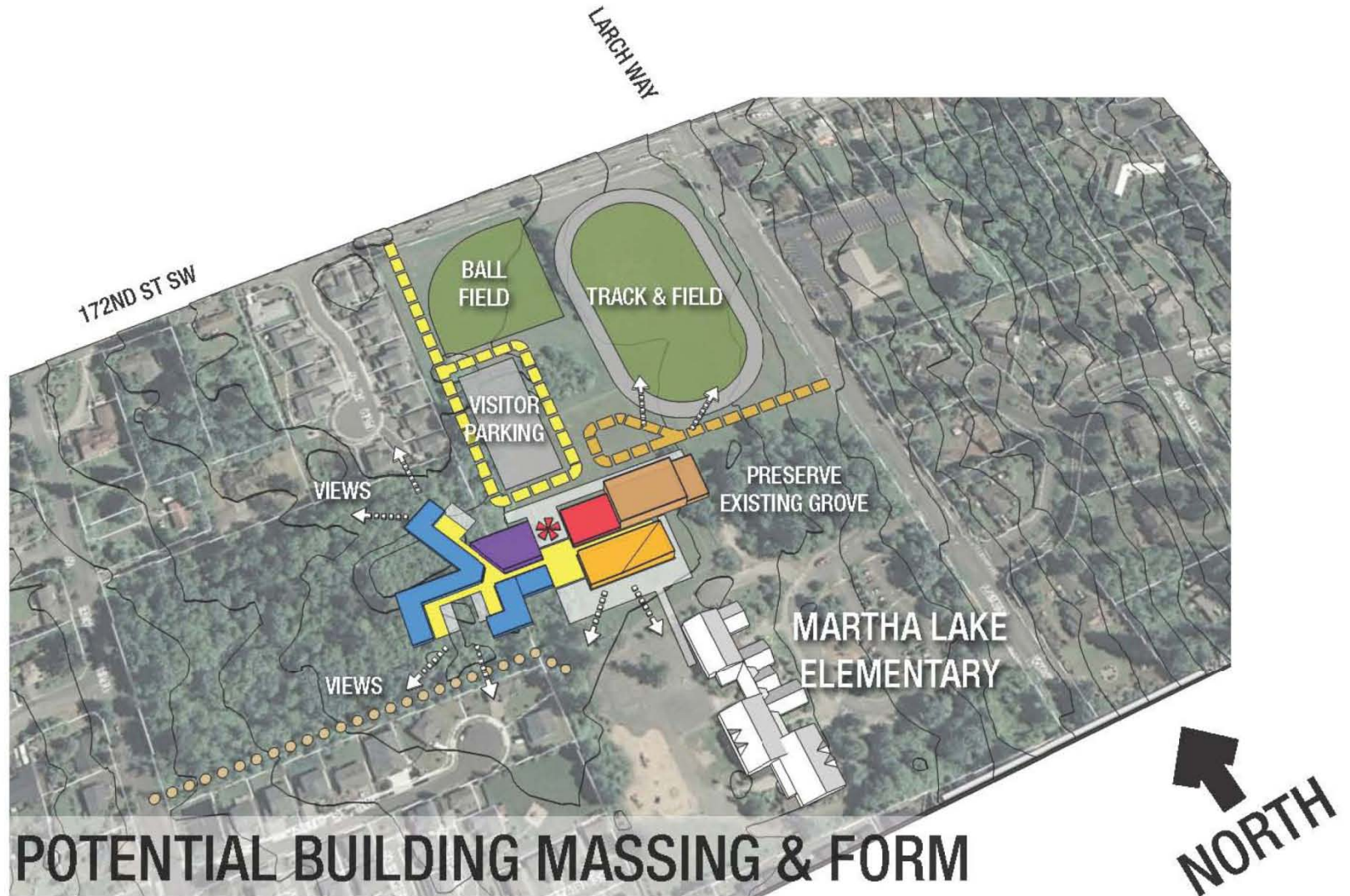
ALDERWOOD MIDDLE SCHOOL

GCCM Presentation to Project Review Committee | May 22, 2014



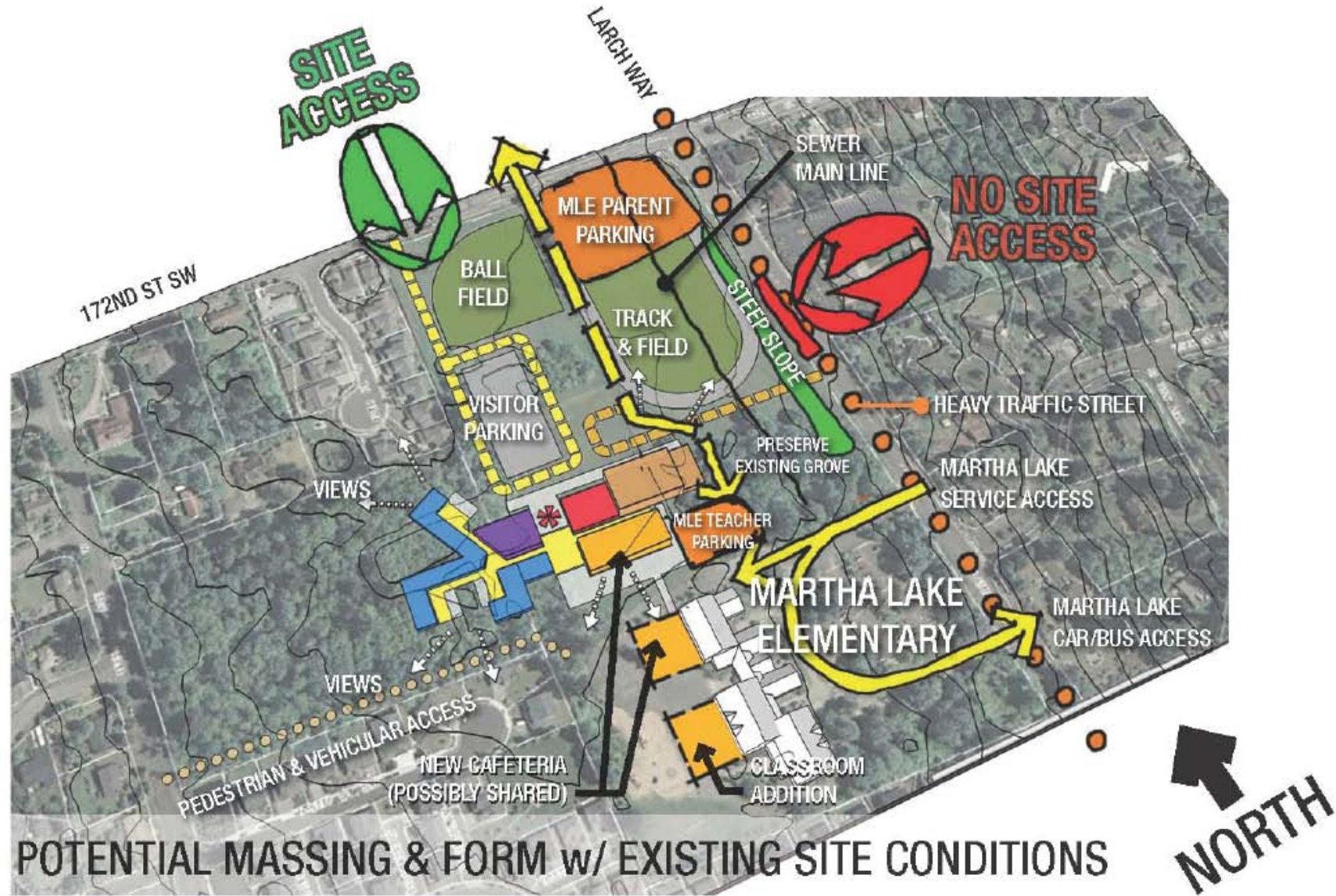






// Alderwood Middle School

Occupied Site



Complexities of AMS Program

- 21st Century Learning Environments
- Inquiry Based Curriculum Models
- Interdisciplinary Pedagogy



Complexities of AMS Systems

- Significantly Beat NREC
- Building as a Learning Tool
- Complex Integrated Control Systems

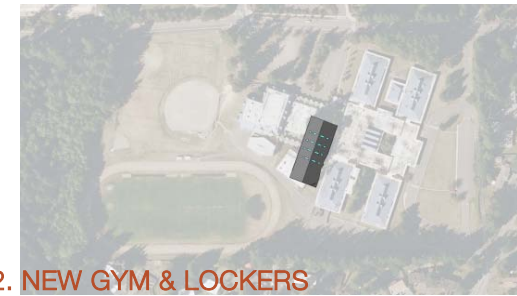


Complex Scheduling, Phasing, & Coordination

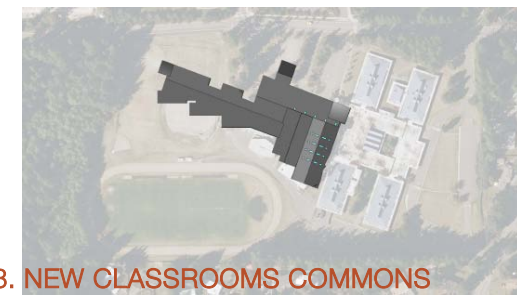
- Increased scheduling reliability
- Decreased risk of delay to ESD Capital Plan
- Knowledgeable, invested resource scenario planning



1. EXISTING



2. NEW GYM & LOCKERS



3. NEW CLASSROOMS COMMONS



4. NEW SITE WORK

Occupied Facility & Existing Conditions

- Enhanced student safety planning
- Construction traffic and access expertise



Critical Involvement During Design

- Early input on cost effectiveness of innovative systems and products
- Increased coordination on integrated packages
- Early input on excess soils usage



Project Role	Meadowdale Middle School	Alderwood Middle School
ESD Project Director	Edward Peters	Edward Peters
ESD Project Manager - Planning through mid-Design Development	Edward Peters	Taine Wilton
ESD Project Manager - Mid-Design Development through Construction and Occupancy	Debra Born (subsequently moved to California)	Taine Wilton
ESD Office Support	Devone Miles	Devone Miles
ESD Design Standards, Move-in and Commissioning Support	Nick Chou	Nick Chou
Integrus Principal In Charge	Brian Carter	Brian Carter
Integrus Project Manager	Jim Petrich	Jim Petrich
Integrus Project Architect	Jeff Middleton	Jeff Middleton
Integrus Project Designer	David Van Galen	David Van Galen
Hainline GC/CM Consultant Advisor	Charles Hartung	Charles Hartung
Perkins Coie Legal Counsel	Richard Prentke	Richard Prentke



integrus
ARCHITECTURE

ALDERWOOD MIDDLE SCHOOL

GCCM Presentation to Project Review Committee | May 22, 2014

