

An aerial photograph of the Washington State Capitol building, featuring a prominent central dome and classical architectural elements. The building is surrounded by green lawns and other government structures. The background shows a dense urban area with various buildings and trees.

THANK YOU FOR JOINING US

- **If you would like to update your email with us, please email DESLCM@des.wa.gov**
- **Please save all questions for the end**
- **We plan 20 minutes for Q&A**
- Thank you!

LEGISLATIVE CAMPUS MODERNIZATION

STAKEHOLDER MEETING #15

December 08, 2022

AGENDA

- *LCM 90 Day Look Ahead*
- *LCM Landscape Peer Review Panel and Capitol Campus Arboretum Feasibility Study*
- *LCM Global: Legislative Modular Building – Informational*
- *Newhouse Building Replacement - Informational*
- *Pritchard and O'Brien Project – Informational*

90 DAY LOOK AHEAD

December 2022

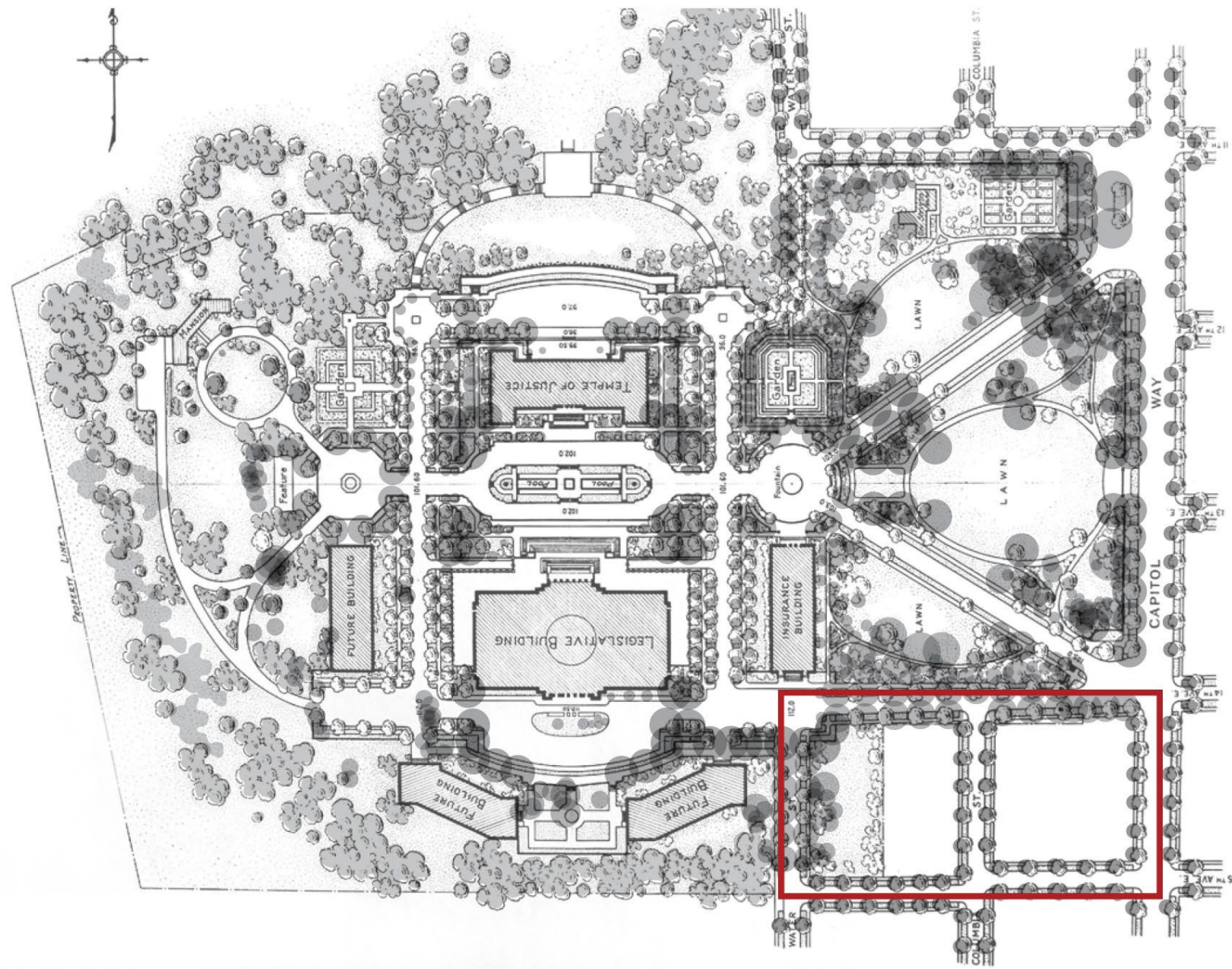
- PET meeting December 8, 2022
- LCM Stakeholder meeting #15 December 8, 2022
- SCC meeting December 15, 2022
- Legislative Modular Building "*Conditional Use*" expected December 15, 2022
- LCM Landscape Peer Review Panel meeting #4 December 19, 2022
- City of Olympia Newhouse building permit submittal December 23, 2022

February 2023

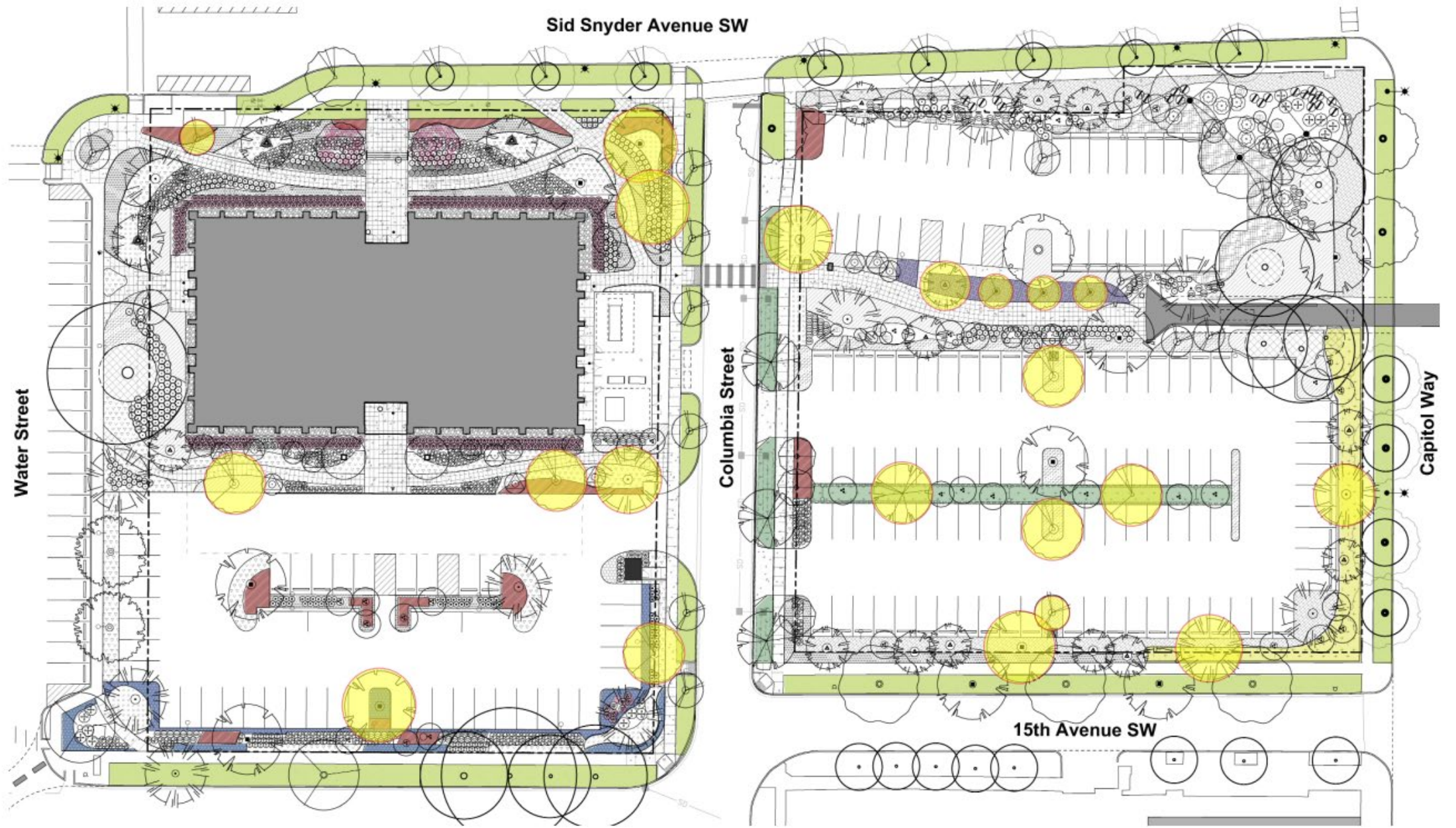
- PET meeting February 9, 2023
- LCM Landscape Peer Review Panel #6 February 14, 2023
- Newhouse building permits expected by mid-February
- LCM Stakeholder Meeting #17 February 23, 2023
- Potential Newhouse construction start date early March 2023
- Pritchard and O'Brien SD complete mid-March 2023

January 2023

- 2023 Session January 9, 2023 – April 24, 2023
- LCM Landscape Peer Review Panel #5 January 10, 2023
- LCM Stakeholder Meeting #16 January 26, 2023



OLMSTED BROTHERS 1928 PLAN
OVERLAIN WITH HISTORICALLY INTENDED TREES SHOWN IN 1929 PLAN



NEWHOUSE PLANTING PLAN - CURRENT PLAN

CAPITOL CAMPUS ARBORETUM
FEASIBILITY STUDY



WHAT IS AN ARBORETUM?

An arboretum is an area devoted to specimen plantings of trees and shrubs. Distinct from a forest, nursery, or park, it is in a sense an outdoor museum of trees. It is a place where many varieties of trees are grown for research, educational and ornamental purposes; where trees and shrubs are cultivated for exhibition.

OBJECTIVES

- Increase educational opportunities to further enhance visitors' knowledge, understanding, and appreciation of the campus horticultural collection
- Increase visitors' knowledge of the ecosystem services that plants provide to benefit human well-being
- Increase awareness of the Capitol Campus as a destination for visiting, learning, and enjoyment
- Proposed name: Washington State Capitol Arboretum



LEGISLATIVE MODULAR BUILDING



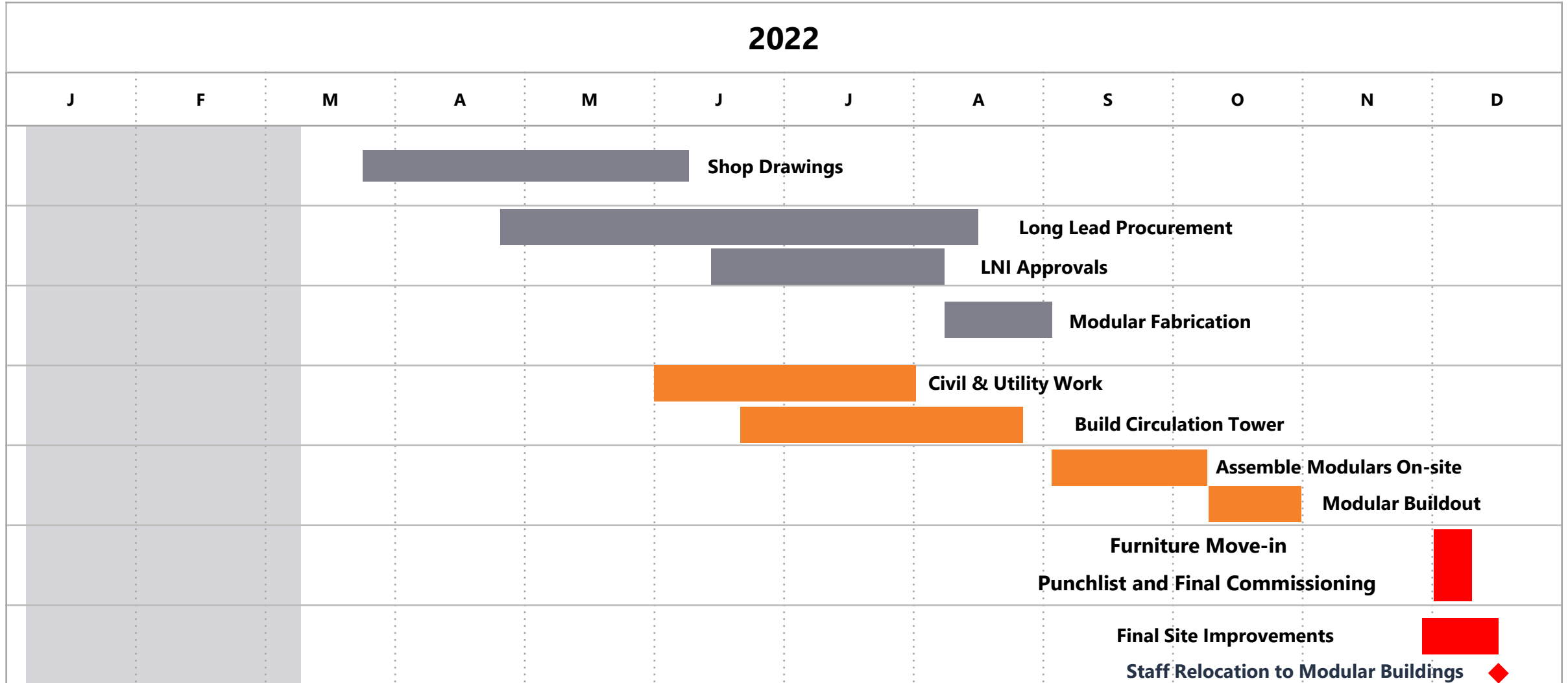
LEGISLATIVE MODULAR BUILDING

- **Scope:** Two-story building with 16 modules (15,147 SF). Includes south elevator, stairs, and lobby.
- **Schedule:** All 16 modules have been delivered, crane hoisted, stacked & structurally stitched together installed on foundations completed on November 22nd. Continued Modular overall finishing, HVAC, power, data, lighting/ceiling installation will continue thru mid- December. Furniture move-in scheduled for early December with 'Conditional Occupancy' scheduled for mid-December prior to beginning of Legislative Session in January. Note: Elevator installation & commissioning will continue through December and into January 2023.
- **Budget:** Legislators approved a budget of \$9.5M in total project costs on March 8, 2022. GCCM and subcontractors are coordinating procurement schedule for long-lead items (elevator, HVAC units) with very tight supply chain pressure.

LEGISLATIVE MODULAR BUILDING

- **Scope:** Two-story building with 16 modules (15,147 SF). Includes south elevator, stairs, and lobby.
- **Schedule:** Overall finishing (HVAC, power, data, lighting/ceiling installation) continues. Furniture move-in began Monday, December 5 with '*Conditional Occupancy*' scheduled for mid-December. Note: Elevator installation and commissioning will continue through December and into January 2023.
 - [Legislative Campus Modernization: Modular Building Construction – YouTube](#)
- **Budget:** PET approved a budget of \$9.5M in total project costs on March 8, 2022. GCCM and subcontractors are coordinating procurement schedules for long-lead items (elevator, HVAC units) with very tight supply chain pressure.

DRAFT LEGISLATIVE MODULAR BUILDING SCHEDULE

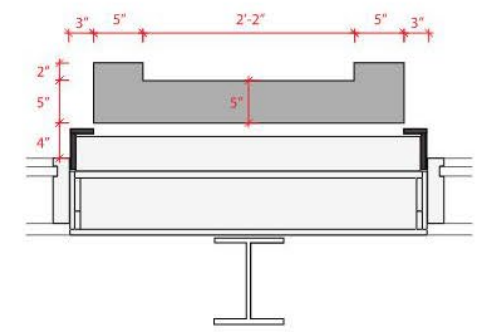


2022 Short Session

NEWHOUSE BUILDING REPLACEMENT

NEWHOUSE BUILDING REPLACEMENT

- **Scope:** Building provides a total of 59,240 square feet, including an expanded basement for an elevator stop.
- **Schedule:**
 - Estimated Substantial Completion date is November 2024.
 - City of Olympia building permit submittal is December 23, 2022.
 - Construction Documents (CDs) will be completed on February 27, 2023.
- **Budget:**
 - On September 16, 2022, LCM Project Executive Team (PET) approved a budget increase of \$6M for the Newhouse Replacement Building.
 - On October 24, 2022, PET approved a budget increase of an additional \$1.6M.
 - Revised total target project cost is \$83.8M (current budget law is \$69M).



Staple Profile - Bronze Frame

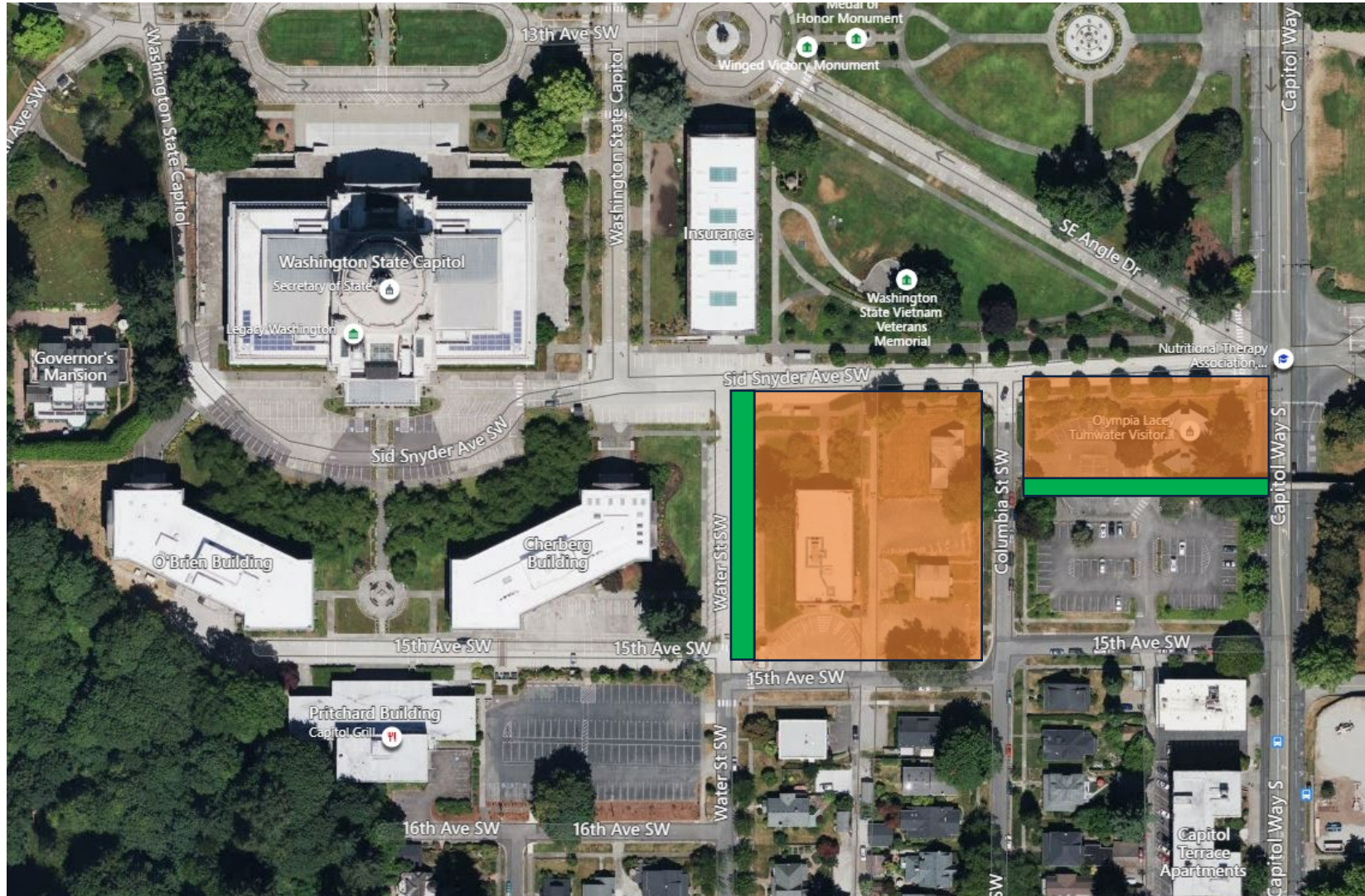




MIXING CHAMBER - SECTION PERSPECTIVE

NEWHOUSE BUILDING REPLACEMENT & LCM GLOBAL SUBPROJECT | The Miller Hull Partnership

CONSTRUCTION LAY DOWN AND FENCING FEBRUARY 2023 - JUNE 2023



CONSTRUCTION LAY DOWN AND FENCING JUNE 2023 - DECEMBER 2024



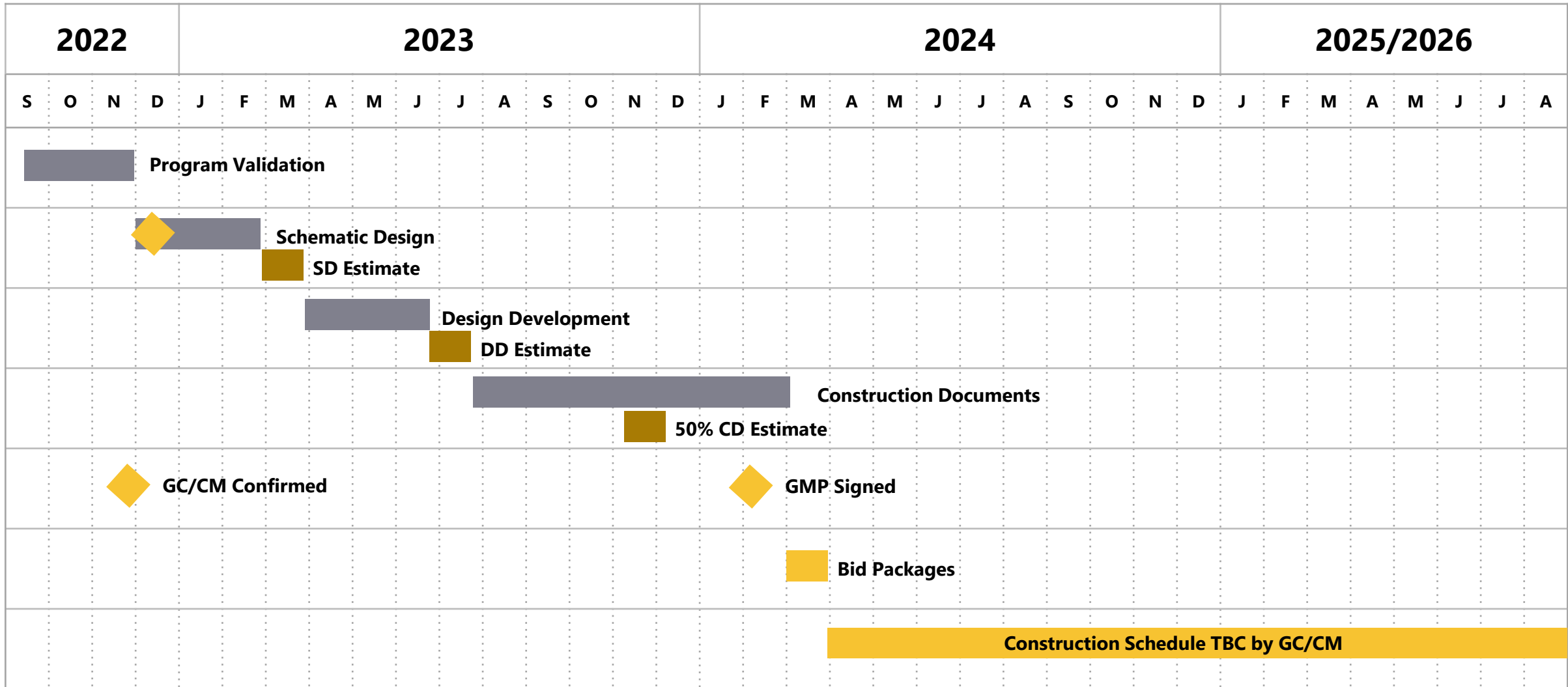
PRITCHARD AND O'BRIEN PROJECT



PRITCHARD AND O'BRIEN PROJECT

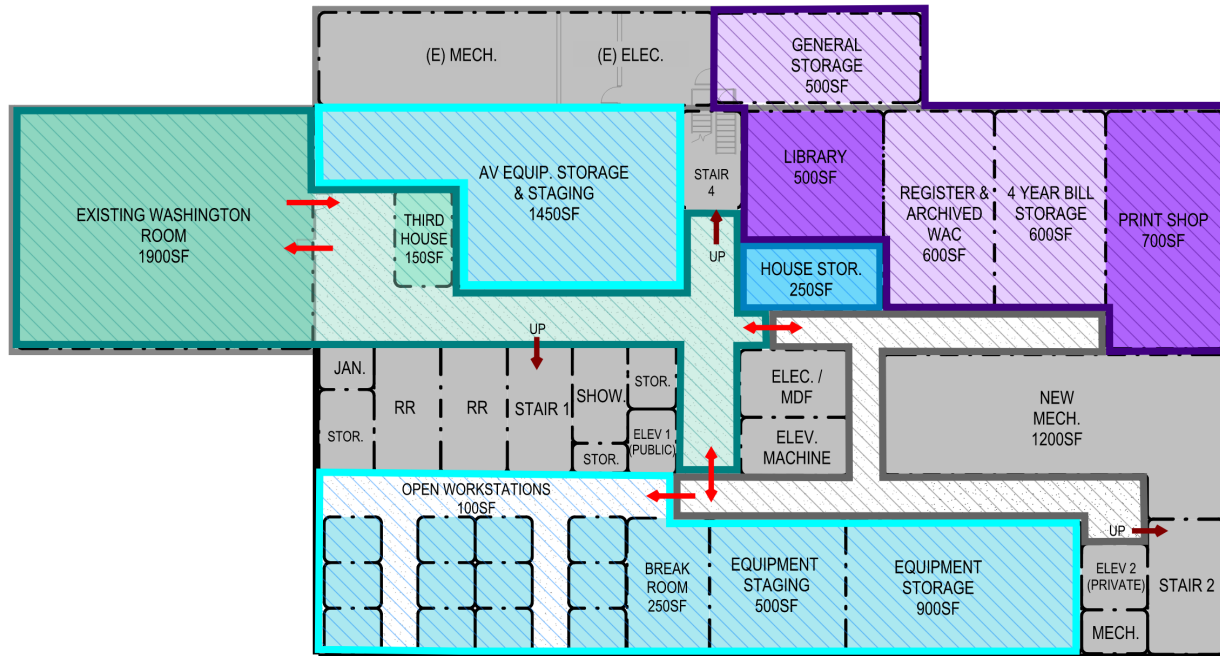
- **Scope:** Pritchard Rehabilitation/Expansion is approximately 77,000 SF; O'Brien renovation is approximately 17,630 SF on the third and fourth floors.
- **Schedule:** Architectural program validation for both buildings is complete. Schematic Design kicked off November 29, 2022.
- **Budget:** Total target project costs are \$119.4M for Pritchard and \$6.8M for O'Brien.

Pritchard and O'Brien Project Schedule







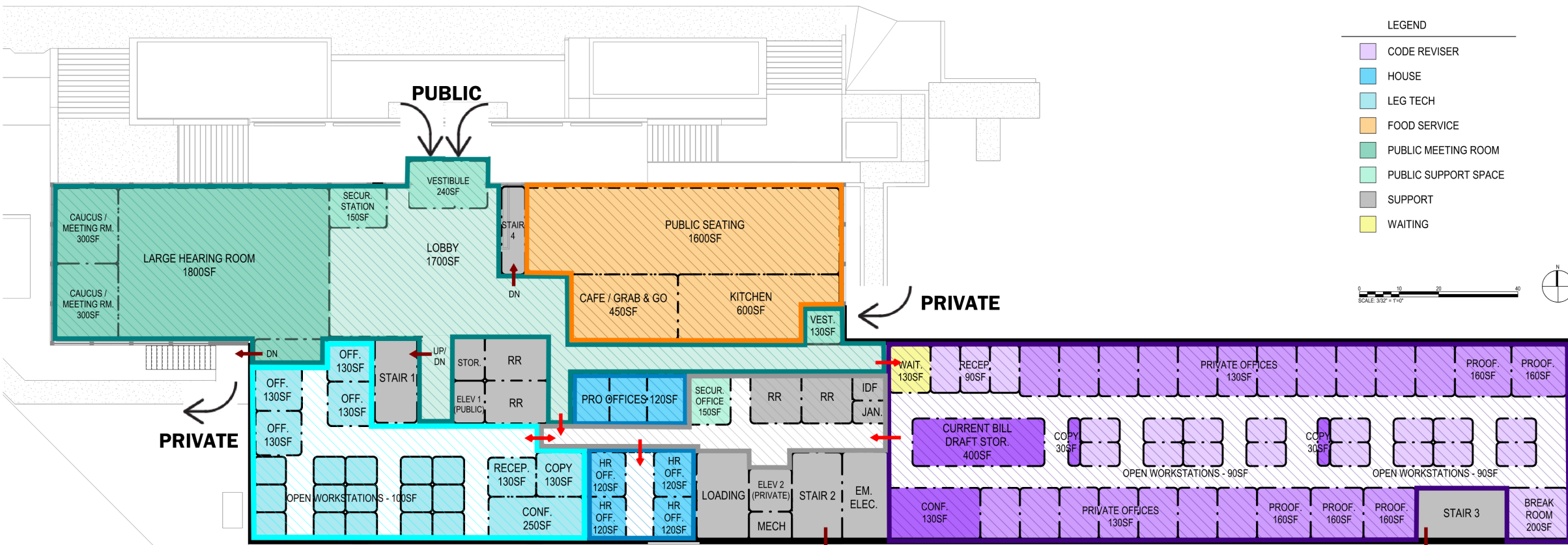


- LEGEND
- CODE REVISER
 - HOUSE
 - LEG TECH
 - FOOD SERVICE
 - PUBLIC MEETING ROOM
 - PUBLIC SUPPORT SPACE
 - SUPPORT
 - WAITING

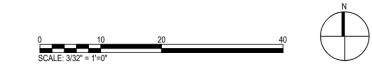


PRITCHARD BUILDING | LEVEL 00 (BASEMENT)





- LEGEND
- CODE REVISER
 - HOUSE
 - LEG TECH
 - FOOD SERVICE
 - PUBLIC MEETING ROOM
 - PUBLIC SUPPORT SPACE
 - SUPPORT
 - WAITING

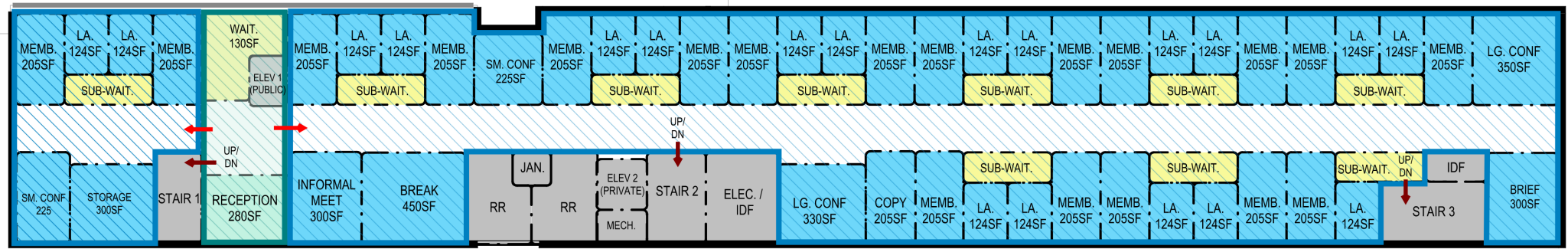
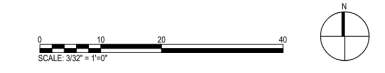


PRITCHARD BUILDING | LEVEL 01



MEMBER OFFICES:
 LEVEL 02 = 19
 LEVEL 03 = 19
 TOTAL = 38

- LEGEND
- CODE REVISER
 - HOUSE
 - LEG TECH
 - FOOD SERVICE
 - PUBLIC MEETING ROOM
 - PUBLIC SUPPORT SPACE
 - SUPPORT
 - WAITING



PRITCHARD BUILDING | LEVEL 02



MEMBER OFFICES:

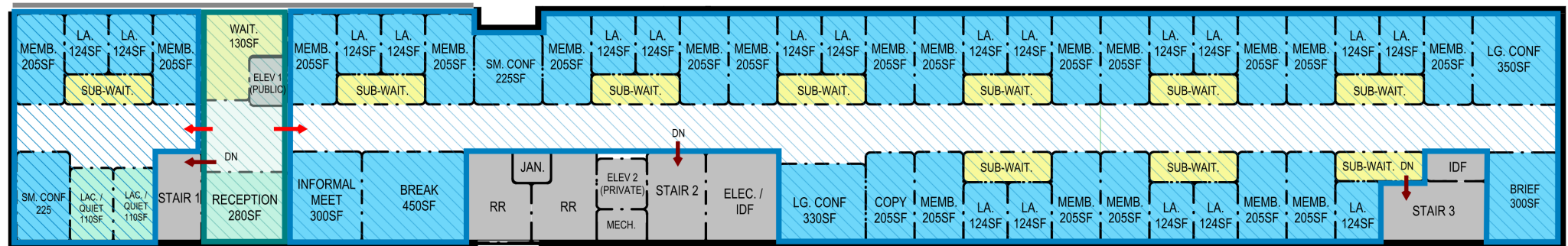
LEVEL 02 = 19

LEVEL 03 = 19

TOTAL = 38

LEGEND

- CODE REVISER
- HOUSE
- LEG TECH
- FOOD SERVICE
- PUBLIC MEETING ROOM
- PUBLIC SUPPORT SPACE
- SUPPORT
- WAITING

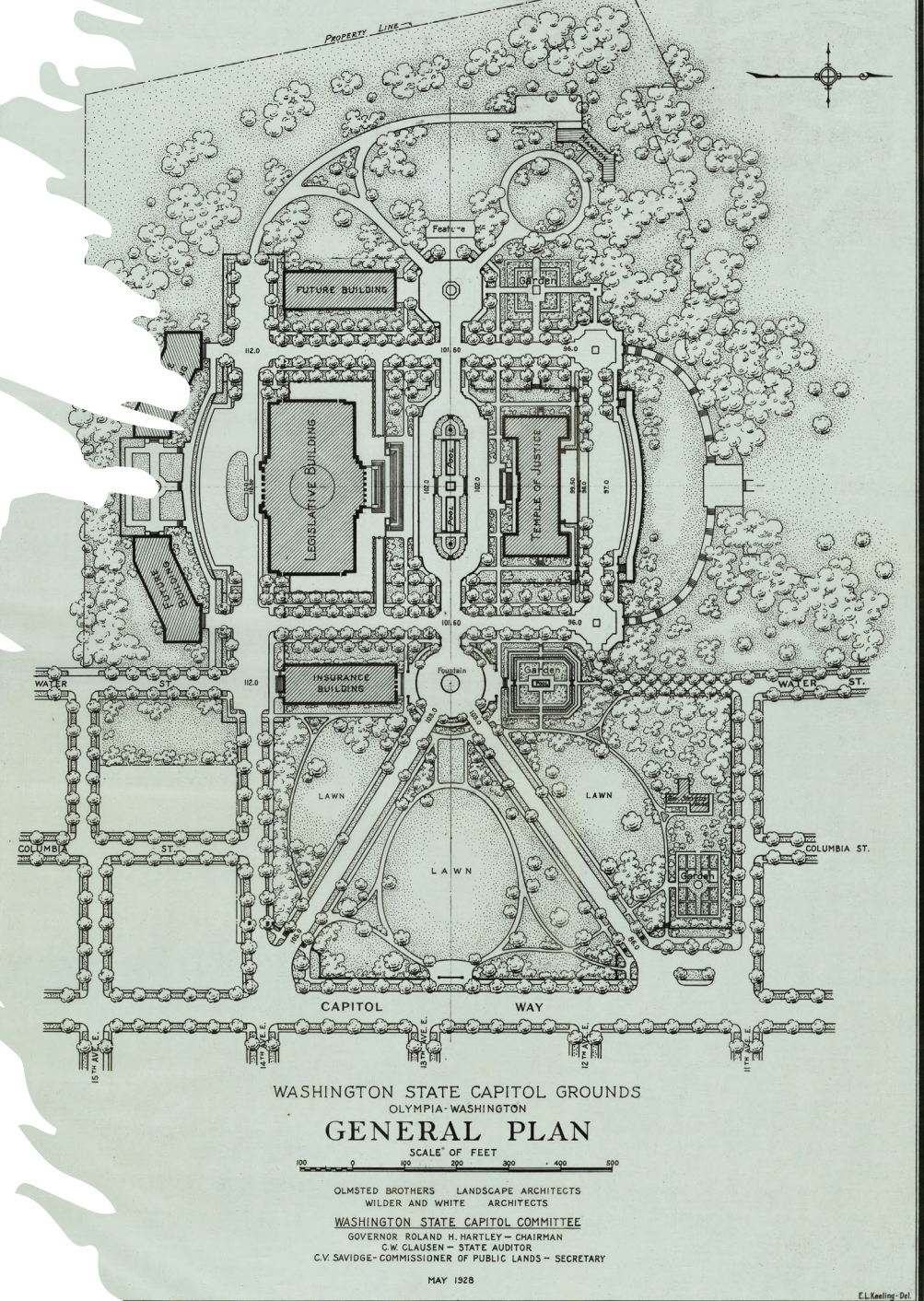


PRITCHARD BUILDING | LEVEL 03



Q&A

- Please limit comments to 3 minutes per question/comment
- If there are follow-up questions, please email them to DES_LCM@des.wa.gov
- All updates regarding stakeholder meeting dates and other LCM updates are posted at [Legislative Campus Modernization \(LCM\) | Department of Enterprise Services \(wa.gov\)](#) and Public Meeting updates here [LCM Public Meetings | Department of Enterprise Services \(wa.gov\)](#)



THANK YOU



clarissa.easton@des.wa.gov



360-701-0088



www.des.wa.gov