

US 395 NSC: 70 Years in the Making

The purpose of the NSC placemaking & community engagement is to work with communities in identifying issues and potential placemaking solutions to develop and enhance great places around the NSC, while creating a multimodal and multi-use corridor. When complete, the Children of the Sun Trail will connect people that bike, walk, and roll to existing trails, neighborhoods and businesses while connecting I-90 to US 395 and US 2.

Progress

Eastern Washington University's Urban and Regional Planning Department, the City of Spokane, and WSDOT's community engagement began in the summer of 2017. Since this time, public meetings, workshops, charrettes and collaboration events have been held with the public and communities adjacent to the yet to be completed sections of the NSC and Children of the Sun Trail. Community engagement and collaboration with Whitman, Hillyard, Bemiss, and Minnehaha has been completed, with Chief Garry Park, and East Central neighborhoods in different stages of progress. From the kick-off to subsequent community outreach, focus areas were identified, architectural

design themes emerged along with features and amenities desired by the neighborhoods. The Children of the Sun Trail alignment north of the Spokane River was also determined. Alignment was based on principles of connectivity, access and comfort. Several areas along the trail were identified as possible public spaces that could be developed to reflect neighborhoods' identities. An artist was engaged to design architectural features that reflect preferred community themes.

"At WSDOT, inclusive engagement means reaching out to all community members, so that they can choose to have a voice in the process and know their ideas were heard and considered."

Secretary of Transportation Roger Millar

Placemaking & Community Engagement

NSCPlace.com is where you can find NSC and Children of the Sun Trail information, such as:

- ▶ Project overview, upcoming events, engagement approach, architectural design themes, maps, and survey results
- ▶ Upcoming collaboration events and open surveys
- ▶ Resources like trail maps and placemaking principles

Project Contact Information

Todd Trepanier, P.E.
Regional Administrator
Trepantv@wsdot.wa.gov

WSDOT Eastern Region
2714 N. Mayfair
Spokane, WA 99207
(509) 324-6000

Terrence Lynch, P.E.
Project Engineer
terrence.lynch@wsdot.wa.gov

Email: SR395NSC@wsdot.wa.gov
Website: NSCFreeway.com

Americans With Disabilities Act (ADA) Information

This material can be made available in an alternate format by emailing the WSDOT Office of Equal Opportunity and Civil Rights at wsdotada@wsdot.wa.gov or by calling toll free, 855-362-4ADA (4232). Persons who are deaf or hard of hearing may make a request by calling the Washington State Relay at 711.

Title VI Notice to Public

It is the Washington State Department of Transportation's (WSDOT) policy to assure that no person shall, on the grounds of race, color, national origin, as provided by Title VI of the Civil Rights Act of 1964, be excluded from participation in, be denied the benefits of, or be otherwise discriminated against under any of its programs and activities. Any person who believes his/her Title VI protection has been violated, may file a complaint with WSDOT's Office of Equity and Civil Rights (OECR). For additional information regarding Title VI complaint procedures and/or information regarding our non-discrimination obligations, please contact OECR's Title VI Coordinator at (360) 705-7090.



North Spokane Corridor (NSC) US 395

January 2024

NSC Moving Forward



Project Funded and Underway

Connecting Washington is a \$16 billion revenue package that allocates funding for mega- projects, preservation and maintenance, service, ferries, and multi modal transportation projects. This new package includes an 11.9 cent gas tax increase. Through this funding, the NSC project was allocated \$879 million to complete the connection of the NSC from Francis Avenue, south to I-90. Funding and individual construction projects are spread out across 12 years starting in 2017, with an anticipated open to traffic date in 2030.



US 395/Wandermere Interchange

Over 7 Miles Complete - Just 3.5 Miles to Go

At completion, this project will connect to US 395 at Wandermere and US 2 to the north and connect to I-90 near the Freya/Thor interchange to the south. This will create a 60-mile per hour, 10.5-mile-long north/south limited access facility.

Since the groundbreaking celebration in August 2001, over five and a half miles of freeway, three interchanges, 30 bridges, one railroad tunnel, and a multi-use trail that parallels the NSC have been built. Dozens of construction companies, employing hundreds of skilled workers, have been working on the complex series of projects to bring this major portion of the new freeway to reality. In

October 2012, a significant milestone was achieved, when the north half of the NSC was fully opened to traffic.



Farwell/US 2 Interchange



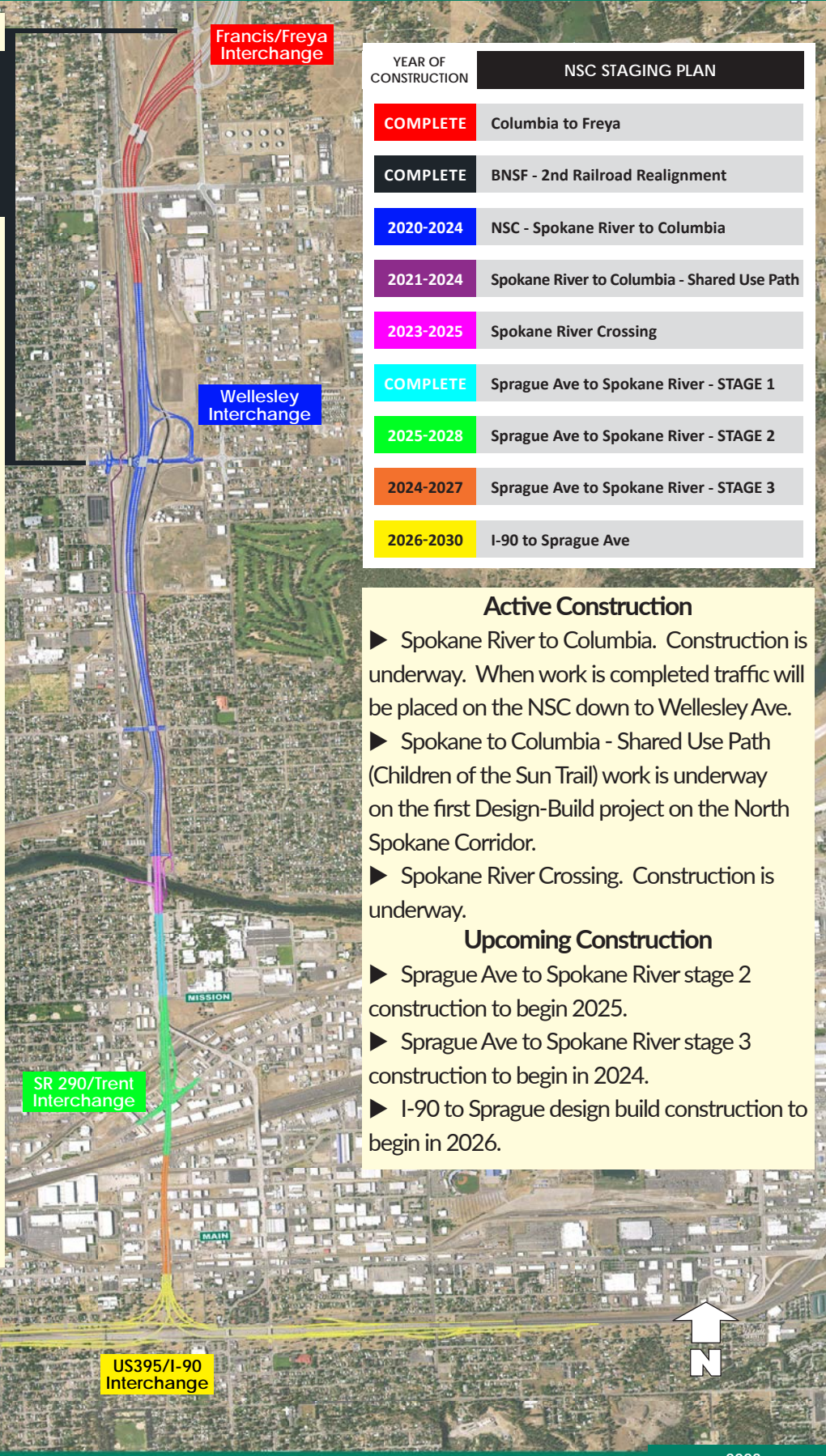
Wellesley Interchange

NORTH SPOKANE CORRIDOR - CONNECTING WASHINGTON

I-90 to Francis/Freya Interchange

Progress

- ▶ As of late Fall of 2023 an additional 1.5 miles of NSC was opened to motorists between the Francis/Freya Interchange and the Wellesley Interchange.
- ▶ August 2001, "Ground-Breaking Ceremony", signaled the start of corridor construction.
- ▶ On August 22, 2009, a "Ribbon Cutting Celebration" took place opening the first driveable section to traffic.
- ▶ On October 2, 2012 a "Ribbon Cutting Celebration" was held, celebrating completion of the northern 5.5 miles.
- ▶ June 2015, legislature funded NSC completion to I-90 as part of the Connecting Washington package.
- ▶ Construction of two mainline NSC structures over Freya Street, completed 2019.
- ▶ 2nd BNSF Rail Realignment beginning in 2019 and completed in 2021. This project realigned the BNSF railroad tracks through the Hillyard area, including a new BNSF mainline bridge and spur line bridge over Wellesley Ave.
- ▶ Columbia Avenue to Freya Street PCC Paving Project, completion 2020.
- ▶ Over the next 7 years, construction will occur at various locations, generally progressing the project from north to south.



YEAR OF CONSTRUCTION	NSC STAGING PLAN
COMPLETE	Columbia to Freya
COMPLETE	BNSF - 2nd Railroad Realignment
2020-2024	NSC - Spokane River to Columbia
2021-2024	Spokane River to Columbia - Shared Use Path
2023-2025	Spokane River Crossing
COMPLETE	Sprague Ave to Spokane River - STAGE 1
2025-2028	Sprague Ave to Spokane River - STAGE 2
2024-2027	Sprague Ave to Spokane River - STAGE 3
2026-2030	I-90 to Sprague Ave

Active Construction

- ▶ Spokane River to Columbia. Construction is underway. When work is completed traffic will be placed on the NSC down to Wellesley Ave.
- ▶ Spokane to Columbia - Shared Use Path (Children of the Sun Trail) work is underway on the first Design-Build project on the North Spokane Corridor.
- ▶ Spokane River Crossing. Construction is underway.

Upcoming Construction

- ▶ Sprague Ave to Spokane River stage 2 construction to begin in 2025.
- ▶ Sprague Ave to Spokane River stage 3 construction to begin in 2024.
- ▶ I-90 to Sprague design build construction to begin in 2026.

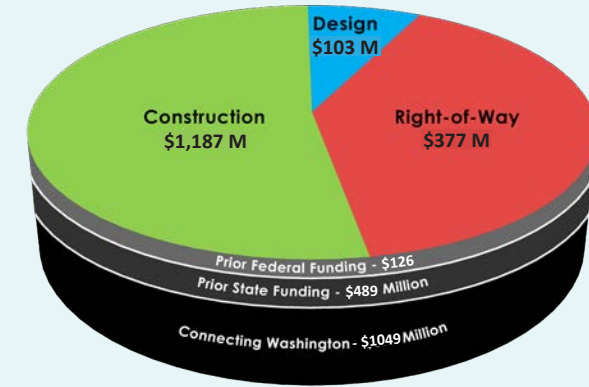
Connecting Washington Funding (Dollars Shown in Millions)

	Prior	21/23	23/25	25/27	27/29	29/31	Total
Engineering	21.3	15.2	12.3	0	0	0	48.8
Right-of-Way	84.6	45.7	13.2	0	0	0	143.5
Construction	67.6	108.2	140.7	269.1	198.5	80.1	864.2
Total	173.5	169.1	166.2	269.1	198.5	80.1	1056.5

2015 Washington State Legislature - Connecting Washington Funding

- North Spokane Corridor fully funded for completion.
- Expenditures spread out from 2017 to 2030.
- Most construction between 2019 to 2030.
- Delivery schedule and budget contingent upon legislative action.

NSC Funding to Date



Estimated Total Cost: \$1,666,000,000

Sprague Ave to Columbia Ave Plan/Profile



Twin bridge elevated freeway (Skyway) from Spokane River to I-90

Above original ground

Below original ground

At-grade Freeway north of Spokane River

Spokane River to Columbia – Crews continue to make progress on the North Spokane Corridor where it currently terminates just south of Francis Avenue. Current work has included Wellesley Avenue, where two roundabouts at the interchange with the NSC are to be constructed, along with work south of Euclid Avenue as crews start the gradual decent toward the Spokane River. Community selected enhancements and features are starting to take shape around the Minnehaha neighborhood and Euclid Avenue where the abutments of the bridge overcrossing have been stamped with themes of nature. Further north at Wellesley Avenue, the historical train elements of the Hillyard Railyard are noticeable just off Market Street with rail tie elements and the locomotive stamped into the concrete of the abutments for the bridge overcrossing Wellesley Avenue. Work is anticipated to last through 2023 before the next section of the NSC opens to Wellesley Avenue.